



20 IN THE BLEAK MIDWINTER

GUSTAV HOLST

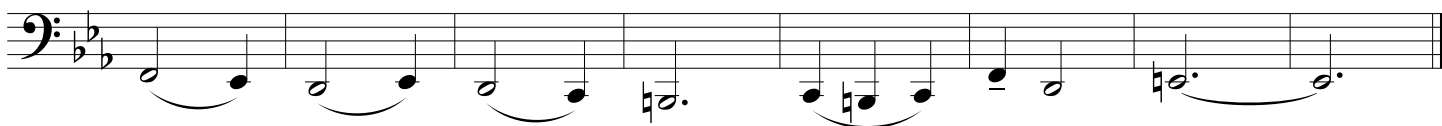
Slowly



21 COVENTRY CAROL

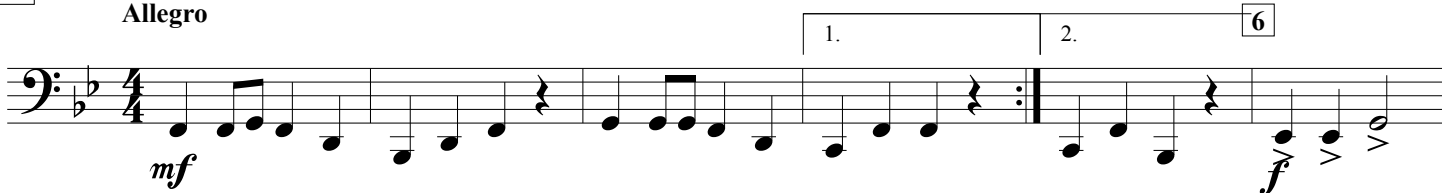
ENGLISH CAROL

Expressivo



22 UP ON THE HOUSETOP

Allegro



23 JOLLY OLD ST. NICK (Duet)

Moderato



24 LULLABY (Duet)

Cantabile

JOHANNES BRAHMS (1833-1897)

Musical score for Lullaby (Duet) in bass clef, 3/4 time, key of B-flat major. The score consists of two staves. The melody is characterized by a gentle, flowing line with many slurs and ties, typical of Brahms's lullabies. The accompaniment provides a steady, rhythmic foundation.

25 WE WISH YOU A MERRY CHRISTMAS

Moderato

Musical score for We Wish You a Merry Christmas in bass clef, 3/4 time, key of B-flat major. The score consists of two staves. The melody is a well-known Christmas tune, featuring a mix of eighth and quarter notes. The accompaniment is a simple, rhythmic pattern. There are first and second endings indicated by '1.' and '2.' above the staff.

26 SING NOEL (Round)

Musical score for Sing Noel (Round) in bass clef, common time, key of B-flat major. The score consists of two staves. The melody is a simple, repetitive round. The first staff is marked with a circled '1' and the second with a circled '2'. The second staff continues the melody with a circled '3'. The accompaniment is a simple, rhythmic pattern.

27 DECK THE HALLS

Vivace

Musical score for Deck the Halls in bass clef, 4/4 time, key of B-flat major. The score consists of two staves. The melody is a well-known Christmas tune, featuring a mix of eighth and quarter notes. The accompaniment is a simple, rhythmic pattern. The score includes dynamic markings: *mf*, *f*, and *mp*. A circled '5' is placed above the first staff, and a boxed '9' is placed below the first staff.

28 DANCE OF THE SUGAR PLUM FAIRIES from "THE NUTCRACKER"

PETER ILYICH TCHAIKOVSKY (1840-1893)

4 5

mp

9

13

17

29 THE FIRST NOEL

Moderato

3 5

mp

13

21

f

29

mf

poco rit.

30 FELIZ NAVIDAD

Moderately (♩ = 120)

Words and Music by JOSÉ FELICIANO

9

7

mf

1. 2.

18

f

1. 2. 27

mf

f

31 FROSTY THE SNOWMAN

Moderately bright, with a swing feel (♩ = 132) ♩ = ♩³

Words and Music by STEVE NELSON and JACK ROLLINS

5

4

mf

13

,

21

mp

Musical score for Tuba, measures 29-31. The music is in bass clef with a key signature of two flats (B-flat and E-flat). Measure 29 starts with a *mf* dynamic. Measure 30 also starts with *mf*. Measure 31 ends with a *f* dynamic. The score includes various note values, rests, and articulation marks.

32 HARK! THE HERALD ANGELS SING

FELIX MENDELSSOHN

Moderato (♩ = c. 108)

Musical score for Tuba, measures 32-35. The music is in bass clef with a key signature of two flats (B-flat and E-flat) and a 4/4 time signature. Measure 32 starts with a *mf* dynamic. Measure 33 starts with a *f* dynamic. Measure 34 starts with a *f* dynamic. Measure 35 ends with a *poco rit.* marking. The score includes various note values, rests, and articulation marks.

33 JINGLE BELLS

Moderately fast (♩ = 144)

J. PIERPONT

4 5

15

27

34 SILENT NIGHT

Moderately (♩ = 116)

Words and Music by JOSEPH MOHR and FRANZ GRUBER

4 5

17

Musical score for Tuba, measures 17-32. The score is in bass clef with a key signature of one flat (B-flat). It consists of three staves. The first staff contains measures 17-20. The second staff contains measures 21-24, with a first ending bracket over measures 21-22 and a second ending bracket over measures 23-24. Measure 32 is marked at the end of the second staff. The third staff contains measures 25-32, with dynamics *f* and *p* indicated.

35

JINGLE BELL ROCK

Moderate swing ($\text{♩} = 132$) $\text{♩} = \text{♩}^3$

Words and Music by JOE BEAL and JIM BOOTHE

Musical score for Jingle Bell Rock, measures 35-22. The score is in bass clef with a key signature of one flat (B-flat) and a 4/4 time signature. It consists of four staves. The first staff contains measures 35-40, with a first ending bracket over measures 35-36 and a *mf* dynamic marking. The second staff contains measures 41-46, with a first ending bracket over measures 41-46. The third staff contains measures 47-52, with a second ending bracket over measures 47-52 and a measure rest (7) in measure 50. The fourth staff contains measures 53-58.

23

Musical score for Jingle Bell Rock, measures 59-64. The score is in bass clef with a key signature of one flat (B-flat). It consists of two staves. The first staff contains measures 59-62. The second staff contains measures 63-64.

36 CAROL OF THE BELLS

Vivace

Musical score for 'Carol of the Bells' for Tuba. The score is written in bass clef, 3/4 time, and B-flat major. It begins with a measure rest of 8 measures, followed by a repeat sign and a dynamic marking of *f*. The score is divided into measures 9, 17, 25, and 33. The piece concludes with two endings: the first ending leads back to the beginning, and the second ending provides a final cadence.

37 GREENSLEEVES

Moderato

Musical score for 'Greensleeves' for Tuba. The score is written in bass clef, 3/4 time, and B-flat major. It features a melodic line with many slurs and ties, characteristic of the original lute tune. The piece concludes with a final cadence.

38 PAT-A-PAN
Allegretto

Musical score for 'PAT-A-PAN' in bass clef, 2/4 time, key of B-flat major. The piece is marked 'Allegretto'. The first staff begins with a dynamic of *mp* and features a crescendo leading to a dynamic of *mf*. The second staff concludes the piece with a final cadence.

39 MARCH from "THE NUTCRACKER"
Allegro

PETER ILYICH TCHAIKOVSKY (1840-1893)

Musical score for 'MARCH from "THE NUTCRACKER"' in bass clef, 4/4 time, key of B-flat major. The piece is marked 'Allegro'. The first staff begins with a dynamic of *f* and includes two triplet markings. The second staff is the first ending, marked with a first ending bracket and a dynamic of *f*. The third staff is the second ending, marked with a second ending bracket and a dynamic of *ff*.

40 WE THREE KINGS
Andante

Musical score for 'WE THREE KINGS' in bass clef, 3/8 time, key of B-flat major. The piece is marked 'Andante'. The score consists of two staves of music.