



Winter Celebrations!



20 IN THE BLEAK MIDWINTER

GUSTAV HOLST

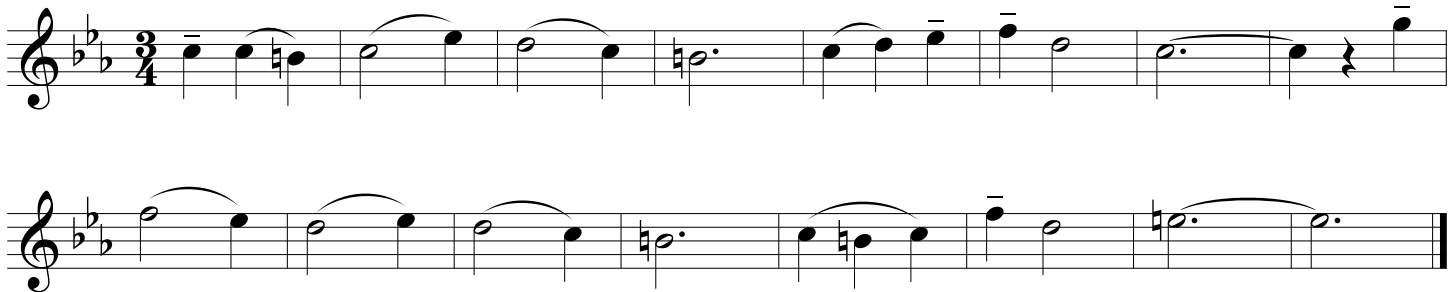
Slowly



21 COVENTRY CAROL

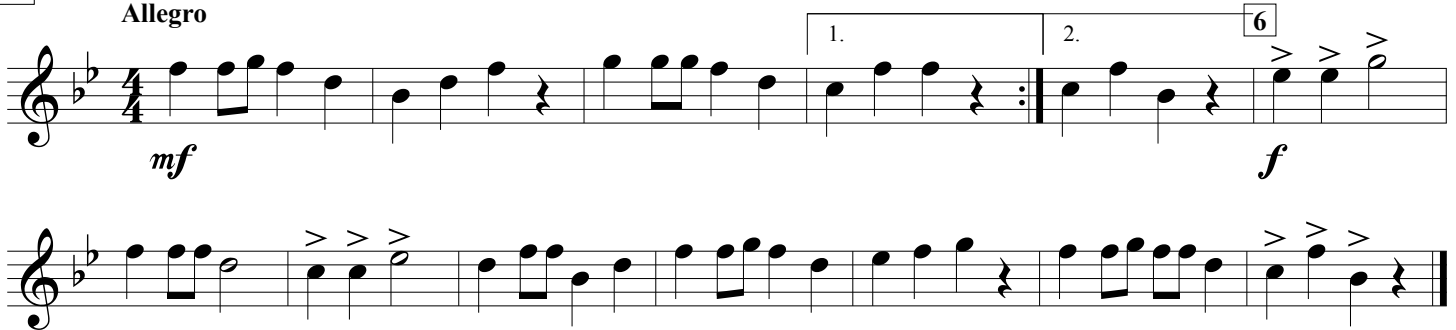
ENGLISH CAROL

Expressivo



22 UP ON THE HOUSETOP

Allegro



23 JOLLY OLD ST. NICK (Duet)

Moderato



24 LULLABY (Duet)

Cantabile

JOHANNES BRAHMS (1833-1897)

Musical score for Lullaby (Duet) by Johannes Brahms, Oboe part, Cantabile. The score is in 3/4 time and B-flat major. It consists of two staves. The melody is characterized by a gentle, flowing line with many slurs and ties, typical of the 'Cantabile' tempo.

25 WE WISH YOU A MERRY CHRISTMAS

Moderato

Musical score for We Wish You a Merry Christmas, Oboe part, Moderato. The score is in 3/4 time and B-flat major. It consists of two staves. The melody is more rhythmic and includes a repeat sign with first and second endings. The tempo is 'Moderato'.

26 SING NOEL (Round)

Musical score for Sing Noel (Round), Oboe part. The score is in 3/4 time and B-flat major. It consists of two staves. The melody is a simple, round tune with three distinct parts labeled 1, 2, and 3. The tempo is not explicitly stated but is likely 'Allegretto'.

27 DECK THE HALLS

Vivace

Musical score for Deck the Halls, Oboe part, Vivace. The score is in 4/4 time and B-flat major. It consists of two staves. The melody is more rhythmic and includes dynamic markings such as *mf*, *f*, and *mp*. It also features a repeat sign and a measure number '9' in a box. The tempo is 'Vivace'.

28 DANCE OF THE SUGAR PLUM FAIRIES from "THE NUTCRACKER"

PETER ILYICH TCHAIKOVSKY (1840-1893)

Musical score for the Oboe part of the 'Dance of the Sugar Plum Fairies' from 'The Nutcracker'. The score is in 4/4 time and B-flat major. It consists of five staves of music. The first staff begins with a 4-measure rest, followed by a repeat sign and a 5-measure rest. The music then continues with a melody starting on G4. The dynamic marking is *mp*. Measure numbers 4, 5, 9, 13, and 17 are indicated in boxes above the staff lines.

29 THE FIRST NOEL

Moderato

Musical score for the Oboe part of 'The First Noel'. The score is in 3/4 time and B-flat major. It consists of five staves of music. The first staff begins with a 3-measure rest, followed by a 5-measure rest. The music then continues with a melody starting on G4. The dynamic marking is *mp*. Measure numbers 5, 13, 21, and 29 are indicated in boxes above the staff lines. The score concludes with a *mf* dynamic marking and a *poco rit.* instruction.

30 FELIZ NAVIDAD

Moderately (♩ = 120)

Words and Music by JOSÉ FELICIANO

Musical score for 'Feliz Navidad' in 4/4 time, key of B-flat major. The score consists of four staves. The first staff begins with a 7-measure rest, followed by a melodic line starting at measure 9. The second staff continues the melody with first and second endings. The third staff starts at measure 18 with a forte (f) dynamic. The fourth staff continues the melody with first and second endings, ending at measure 27. Dynamics include mezzo-forte (mf) and forte (f).

31 FROSTY THE SNOWMAN

Moderately bright, with a swing feel (♩ = 132) ♩ = ♩³

Words and Music by STEVE NELSON and JACK ROLLINS

Musical score for 'Frosty the Snowman' in 4/4 time, key of B-flat major. The score consists of three staves. The first staff begins with a 4-measure rest, followed by a melodic line starting at measure 5. The second staff continues the melody starting at measure 13. The third staff continues the melody starting at measure 21, ending with a mezzo-piano (mp) dynamic. The score includes a triplet of eighth notes.

Musical score for Oboe, measures 25-31. The music is in G minor (two flats) and 4/4 time. It features a melodic line with various dynamics: *mf* (measures 25-28), *mf* (measures 29-30), and *f* (measure 31). There are accents and slurs throughout. Measure 31 ends with a fermata and a hairpin crescendo.

32 HARK! THE HERALD ANGELS SING

FELIX MENDELSSOHN

Moderato (♩ = c. 108)

Musical score for Oboe, measures 32-40. The music is in G minor (two flats) and 4/4 time. It begins with a four-measure rest (marked '4') and a first ending bracket (marked '5'). Dynamics include *mf* (measures 32-33), *f* (measures 34-35), and *poco rit.* (measures 39-40). There are accents and slurs throughout. Measure 40 ends with a fermata.

33 JINGLE BELLS

Moderately fast (♩ = 144)

J. PIERPONT

5

4

f

1. 2.

15

mf

1.

f

2.

27

f

1. 2.

Detailed description: This block contains the musical notation for the first 27 measures of 'Jingle Bells' for the Oboe part. It is in 4/4 time and B-flat major. The score is divided into six systems. The first system (measures 1-4) starts with a four-measure rest, followed by a first ending (measures 5-8) and a second ending (measures 9-12). The second system (measures 13-14) continues the first ending. The third system (measures 15-18) begins with a mezzo-forte (*mf*) dynamic and includes a first ending. The fourth system (measures 19-22) continues with a forte (*f*) dynamic and includes a second ending. The fifth system (measures 23-26) continues with a forte (*f*) dynamic. The sixth system (measures 27-30) includes a first ending and a second ending, concluding the piece.

34 SILENT NIGHT

Moderately (♩ = 116)

Words and Music by JOSEPH MOHR and FRANZ GRUBER

5

4

mp

Detailed description: This block contains the musical notation for the first 10 measures of 'Silent Night' for the Oboe part. It is in 3/4 time and B-flat major. The score is divided into two systems. The first system (measures 1-4) starts with a four-measure rest, followed by a first ending (measures 5-8) and a second ending (measures 9-10). The second system (measures 11-14) continues the first ending. The piece is marked mezzo-piano (*mp*).

17

Musical score for Oboe, measures 17-32. The score is in 4/4 time and B-flat major. It consists of three staves of music. The first staff contains measures 17-20. The second staff contains measures 21-24, with a first ending bracket over measures 21-22 and a second ending bracket over measures 23-24. Measure 32 is marked at the end of the second staff. The third staff contains measures 25-32, with dynamics *f* and *p* indicated.

35

JINGLE BELL ROCK

Words and Music by JOE BEAL and JIM BOOTHE

Moderate swing (♩ = 132)

Musical score for Jingle Bell Rock, measures 35-50. The score is in 4/4 time and B-flat major. It consists of five staves of music. The first staff contains measures 35-40, with a first ending bracket over measures 35-36 and a second ending bracket over measures 37-40. Measure 40 is marked with a box containing the number 5. The second staff contains measures 41-44, with a first ending bracket over measures 41-42 and a second ending bracket over measures 43-44. The third staff contains measures 45-48, with a first ending bracket over measures 45-46 and a second ending bracket over measures 47-48. Measure 48 is marked with a box containing the number 15. The fourth staff contains measures 49-50. The fifth staff contains measures 51-54.

36 CAROL OF THE BELLS

Vivace

Musical score for 'Carol of the Bells' for Oboe. The score is in 3/4 time and B-flat major. It begins with a treble clef and a key signature of two flats. The tempo is marked 'Vivace'. The score consists of six staves of music. The first staff starts with a measure rest of 8 measures, followed by a repeat sign and a measure rest of 9 measures. The music then continues with eighth-note patterns. A dynamic marking of *f* (forte) is placed below the first staff. Measure numbers 9, 17, 25, and 33 are indicated in boxes above the staves. The piece concludes with two first and second endings, marked '1.' and '2.' respectively, both ending with repeat signs.

37 GREENSLEEVES

Moderato

Musical score for 'Greensleeves' for Oboe. The score is in 3/4 time and B-flat major. It begins with a treble clef and a key signature of two flats. The tempo is marked 'Moderato'. The score consists of two staves of music. The first staff starts with a quarter rest, followed by a series of notes with slurs. The second staff continues the melody with similar phrasing and concludes with a final note and a repeat sign.

38 PAT-A-PAN
Allegretto

Musical score for 'PAT-A-PAN' in G major, 2/4 time, Allegretto. The score consists of two staves. The first staff begins with a dynamic marking of *mp* and ends with a crescendo leading to *mf*. The second staff concludes the piece with a final note and a repeat sign.

39 MARCH from "THE NUTCRACKER"
Allegro

PETER ILYICH TCHAIKOVSKY (1840-1893)

Musical score for 'MARCH from THE NUTCRACKER' in G major, 4/4 time, Allegro. The score consists of three staves. The first staff starts with a dynamic marking of *f* and includes triplet markings. The second staff features a first ending bracket and a dynamic marking of *pp*. The third staff features a second ending bracket and a dynamic marking of *ff*. The piece concludes with a repeat sign.

40 WE THREE KINGS
Andante

Musical score for 'WE THREE KINGS' in G major, 3/8 time, Andante. The score consists of two staves. The first staff begins with a dynamic marking of *mp*. The second staff concludes the piece with a final note and a repeat sign.