

Alto Sax  
Bari Sax



# Winter Celebrations!



## 20 IN THE BLEAK MIDWINTER

GUSTAV HOLST

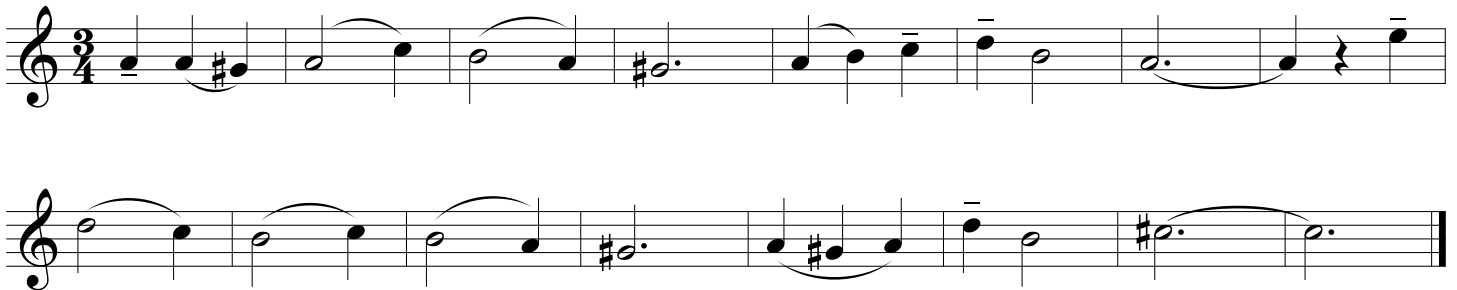
Slowly



## 21 COVENTRY CAROL

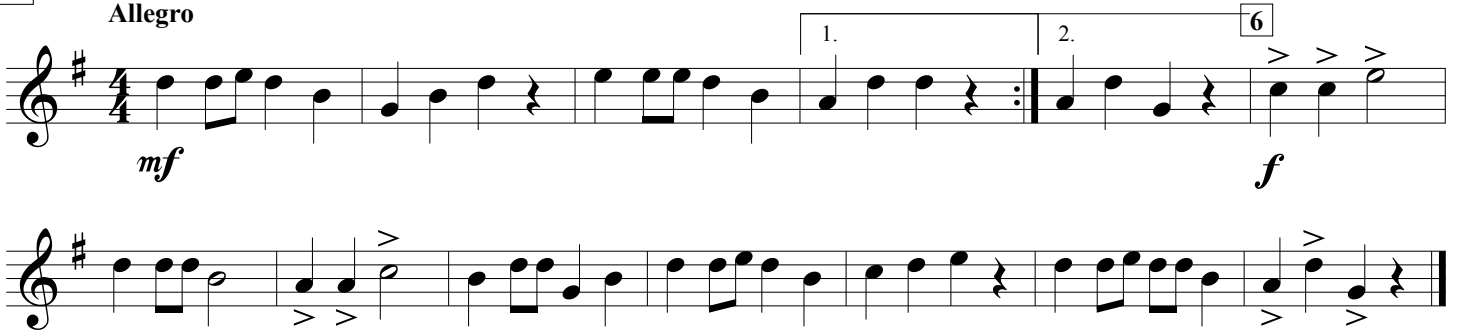
ENGLISH CAROL

Expressivo



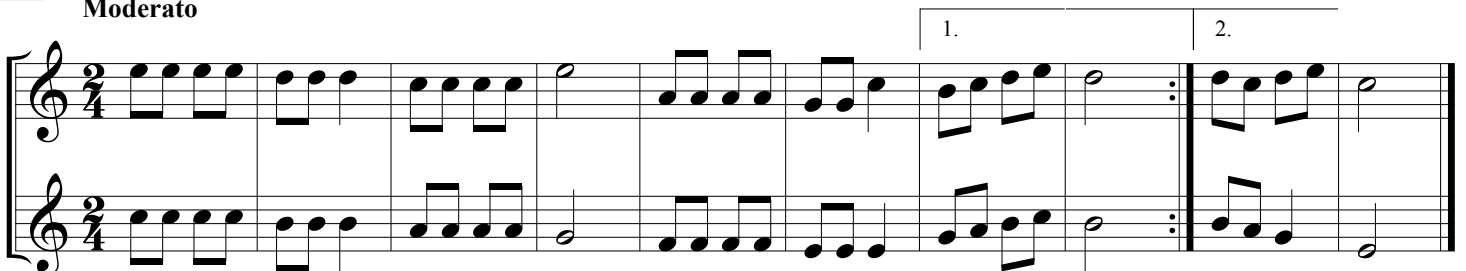
## 22 UP ON THE HOUSETOP

Allegro



## 23 JOLLY OLD ST. NICK (Duet)

Moderato



Winter Celebrations!

Alto Sax  
Bari Sax pg. 2

**24** LULLABY (Duet)

Cantabile

JOHANNES BRAHMS (1833-1897)

Musical score for Lullaby (Duet) in G major, 3/4 time. The score consists of two staves. The first staff begins with a treble clef, a key signature of one sharp (F#), and a 3/4 time signature. The melody is characterized by a slow, flowing line with many slurs and ties. The second staff provides a harmonic accompaniment with a similar melodic style.

**25** WE WISH YOU A MERRY CHRISTMAS

Moderato

Musical score for We Wish You a Merry Christmas in G major, 3/4 time. The score consists of two staves. The first staff begins with a treble clef, a key signature of one sharp (F#), and a 3/4 time signature. The melody is a well-known Christmas tune. The second staff includes a first ending (1.) and a second ending (2.) leading to a repeat sign.

**26** SING NOEL (Round)

Musical score for Sing Noel (Round) in G major, 2/4 time. The score consists of two staves. The first staff begins with a treble clef, a key signature of one sharp (F#), and a 2/4 time signature. The melody is a simple, repetitive round. The second staff continues the melody with a repeat sign at the end.

**27** DECK THE HALLS

Vivace

Musical score for Deck the Halls in G major, 4/4 time. The score consists of two staves. The first staff begins with a treble clef, a key signature of one sharp (F#), and a 4/4 time signature. The melody is a lively, rhythmic tune. The second staff continues the melody with a repeat sign at the end. Dynamic markings include *mf*, *f*, *mp*, and *f*.

Winter Celebrations!

Alto Sax  
Bari Sax pg. 3

**28** DANCE OF THE SUGAR PLUM FAIRIES from "THE NUTCRACKER"

PETER ILYICH TCHAIKOVSKY (1840-1893)

Musical score for 'Dance of the Sugar Plum Fairies' in G major, 4/4 time. The score consists of four staves of music. The first staff begins with a 4-measure rest, followed by a repeat sign and a 5-measure rest. The music then continues with eighth and sixteenth notes. The dynamic marking *mp* is placed below the first staff. Measure numbers 5, 9, 13, and 17 are indicated in boxes above the staves.

**29** THE FIRST NOEL

Moderato

Musical score for 'The First Noel' in G major, 3/4 time. The score consists of five staves of music. The first staff begins with a 3-measure rest, followed by a 5-measure rest. The music then continues with quarter and eighth notes. The dynamic marking *mp* is placed below the first staff. The second staff has a dynamic marking *f* below it. The third staff has a dynamic marking *f* below it. The fourth staff has a dynamic marking *mf* below it. The fifth staff has a dynamic marking *mf* below it and a *poco rit.* marking at the end. Measure numbers 5, 13, 21, and 29 are indicated in boxes above the staves.

Winter Celebrations!

Alto Sax  
Bari Sax pg. 4

30

FELIZ NAVIDAD

Moderately (♩ = 120)

Words and Music by JOSÉ FELICIANO

Musical score for 'Feliz Navidad' in 4/4 time. The score consists of five staves of music. The first staff begins with a fermata over a whole note, marked with a '7' above it. The second staff contains two first and second endings, with a '9' above the first ending. The third staff starts at measure 18 with a fermata and a dynamic marking of *f*. The fourth staff contains two first and second endings, with a '27' above the second ending and a dynamic marking of *mf*. The fifth staff concludes the piece with a dynamic marking of *f* and a fermata over the final note.

31

FROSTY THE SNOWMAN

Moderately bright, with a swing feel (♩ = 132) ♩ = ♩<sup>3</sup>♩

Words and Music by STEVE NELSON and JACK ROLLINS

Musical score for 'Frosty the Snowman' in 4/4 time. The score consists of three staves of music. The first staff begins with a fermata over a whole note, marked with a '4' above it, and a dynamic marking of *mf*. The second staff starts at measure 5 and contains a first ending marked with a '13' above it. The third staff starts at measure 21 and concludes with a dynamic marking of *mp*.

Winter Celebrations!

Alto Sax  
Bari Sax pg. 5

*mf*

29

*mf*

*f*

**32 HARK! THE HERALD ANGELS SING**

FELIX MENDELSSOHN

Moderato (♩ = c. 108)

4

5

*mf*

13

*f*

21

1. 2.

*poco rit.*

Winter Celebrations!

Alto Sax  
Bari Sax pg. 6

**33** JINGLE BELLS

Moderately fast (♩ = 144)

J. PIERPONT

4 5

*f*

1. 2.

15

*mf*

2.

*f*

27

*f*

1. 2.

**34** SILENT NIGHT

Moderately (♩ = 116)

Words and Music by JOSEPH MOHR and FRANZ GRUBER

4 5

*mp*

1. 2.

Winter Celebrations!

Alto Sax  
Bari Sax pg. 7

17

1. 2. 32

*f* *p*

35 JINGLE BELL ROCK

Moderate swing (♩ = 132) ♩ = ♩<sup>3</sup>

Words and Music by JOE BEAL and JIM BOOTHE

4 5

*mf*

1. 15

2. 23

**36** CAROL OF THE BELLS

Vivace

Musical score for 'Carol of the Bells' in G major, 3/4 time. The score consists of six staves. The first staff begins with a whole rest for 8 measures, followed by a repeat sign and a forte (*f*) dynamic. The melody is primarily eighth-note patterns. Measure numbers 9, 17, 25, and 33 are indicated in boxes. The piece concludes with two first and second endings, marked '1.' and '2.' respectively.

**37** GREENSLEEVES

Moderato

Musical score for 'Greensleeves' in G major, 3/4 time. The score consists of two staves. The melody is primarily quarter and eighth notes with some slurs. The piece concludes with a final whole note and a fermata.



Winter Celebrations!

Alto Sax  
Bari Sax pg. 9

**38** PAT-A-PAN  
Allegretto

Musical notation for 'PAT-A-PAN' in G major, 2/4 time. The piece is marked 'Allegretto'. The first staff begins with a dynamic of *mp* and features a crescendo leading to a dynamic of *mf*. The second staff concludes the piece with a final cadence.

**39** MARCH from "THE NUTCRACKER"  
Allegro

PETER ILYICH TCHAIKOVSKY (1840-1893)

Musical notation for 'MARCH from "THE NUTCRACKER"' in 4/4 time. The piece is marked 'Allegro'. The first staff begins with a dynamic of *f* and includes two triplet markings. The second staff features a dynamic of *pp* and a first ending marked '1.'. The third staff features a dynamic of *f*. The fourth staff features a dynamic of *ff* and a second ending marked '2.'. The piece concludes with a final cadence.

**40** WE THREE KINGS  
Andante

Musical notation for 'WE THREE KINGS' in 3/8 time. The piece is marked 'Andante'. The first staff begins with a dynamic of *f*. The second staff concludes the piece with a final cadence.