

SONGS THAT SPOOK!

9 Scooby Doo, Where Are You?
Fast, as if you are being chased!

DAVID MONK and BEN RALEIGH

Musical score for 'Scooby Doo, Where Are You?' in 4/4 time, key of B-flat major. The score consists of three staves. The first staff contains measures 1-6. The second staff contains measures 7-11, with a first ending (1.) and a second ending (2.) leading to measure 10. The third staff contains measures 12-16. The piece concludes with a double bar line.

10 Theme from Ghostbusters
Bright Pop Beat

RAY PARKER, JR. (1954-)

Musical score for 'Theme from Ghostbusters' in 4/4 time, key of B-flat major. The score consists of six staves. The first staff contains measures 1-5, with a '5' above the staff and a 'f' dynamic marking below. The second staff contains measures 6-10, with a circled '11' at the start and the instruction 'Play' at the end. The third staff contains measures 11-14, with a circled '15' at the start and the lyrics 'Ghost bust ers!' below. The fourth staff contains measures 15-19, with a circled '23' at the start and the lyrics 'Ghost bust ers!' below. The fifth staff contains measures 20-24, with a circled '23' at the start and the lyrics 'Ghost bust ers!' below. The sixth staff contains measures 25-28, with the instruction 'Fine' above and 'D.S. al Fine' below. The piece concludes with a double bar line.

11 Hall of the Mountain King
Moderato

EDVARD GRIEG (1843-1907)

Musical notation for 'Hall of the Mountain King' in 4/4 time, key of B-flat major. The piece is marked *mf*. It features a melody with eighth and sixteenth notes, including a trill-like figure. A first ending is marked '1.' and a second ending is marked '2.'. The notation includes dynamic markings and articulation symbols like accents and slurs.

12 Marche Slave
Largo

PYOTR ILYICH TCHAIKOVSKY (1840-1893)

Musical notation for 'Marche Slave' in 4/4 time, key of B-flat major. The piece is marked *mp*. It features a melody with quarter and eighth notes, including a trill-like figure. A first ending is marked '1.' and a second ending is marked '2.'. The notation includes dynamic markings and articulation symbols like accents and slurs.

13 Theme from "The Barber of Seville"
Allegro

GIOACCHINO ROSSINI (1792-1868)

Musical notation for 'Theme from "The Barber of Seville"' in 4/4 time, key of B-flat major. The piece is marked *f*. It features a melody with eighth and sixteenth notes, including a trill-like figure. The notation includes dynamic markings and articulation symbols like accents and slurs.

14 This is Halloween from The Nightmare Before Christmas
Moderato

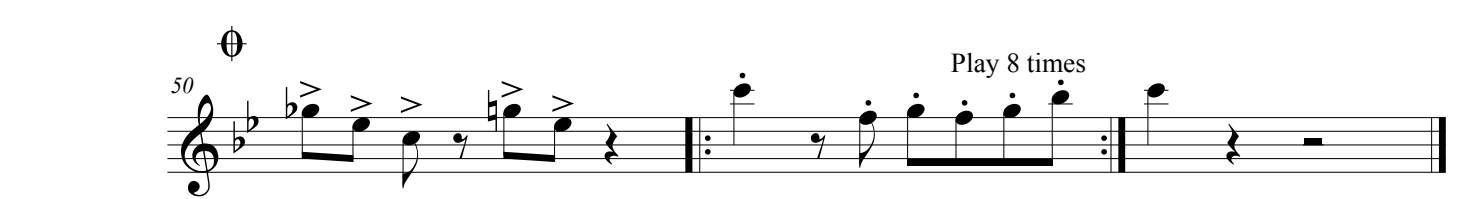
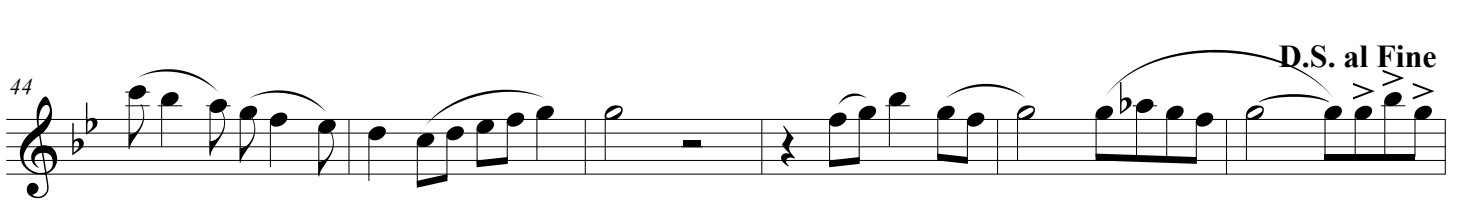
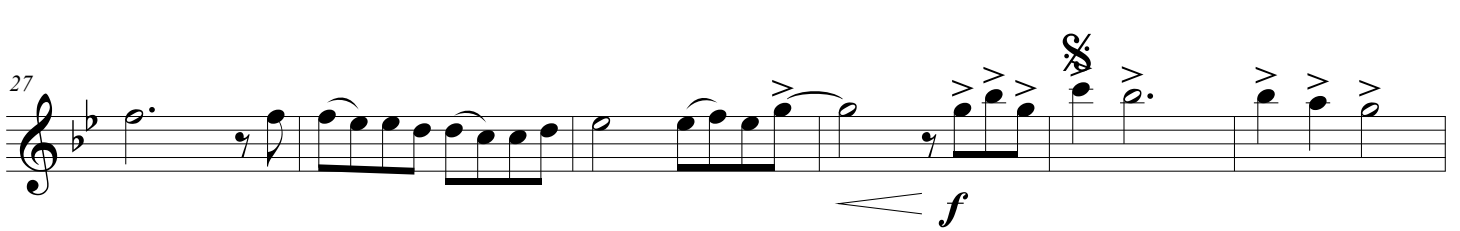
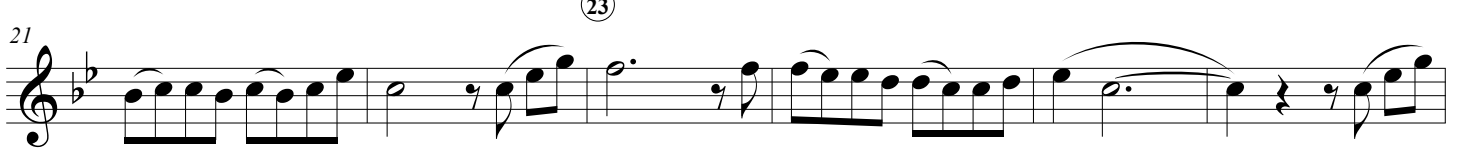
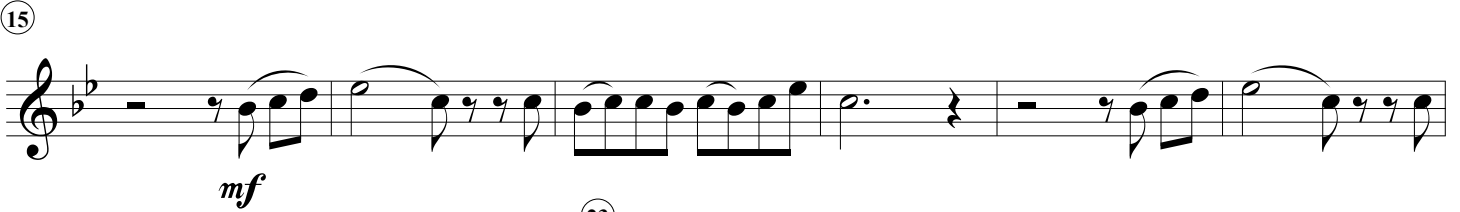
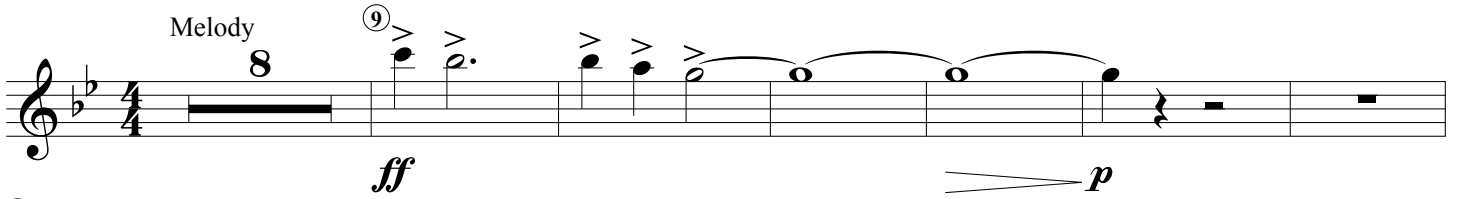
DANNY ELFMAN

Musical notation for 'This is Halloween from The Nightmare Before Christmas' in 4/4 time, key of B-flat major. The piece is marked *Moderato*. It features a melody with quarter and eighth notes, including a trill-like figure. The notation includes dynamic markings and articulation symbols like accents and slurs. Measure numbers 10, 15, and 19 are indicated.

15 Thriller

Bass Line (repeat multiple times)

ROD TEMPERTON
Performed by MICHAEL JACKSON



16 Danse Macabre
Vivace

CAMILLE SAINT-SAËNS (1835-1921)

Musical score for Danse Macabre, Flute part, measures 1-51. The score is in 3/4 time and B-flat major. It begins with a dynamic of *f* and includes various articulations such as accents and slurs. Measure 9 is marked with a circled 9 and a dynamic of *p*. Measure 14 is marked with a circled 14 and a dynamic of *mf*. Measure 26 is marked with a circled 26 and contains a first ending bracket. Measure 34 is marked with a circled 34 and a second ending bracket. Measure 41 is marked with a circled 41 and a dynamic of *f*. Measure 49 is marked with a circled 49 and a dynamic of *f*. Measure 51 is marked with a circled 51 and a dynamic of *ff*. The score includes various rhythmic patterns, including eighth and sixteenth notes, and rests.

17 Intro (from Toccato and Fugue in D minor)
Adagio

JOHANN SEBASTIAN BACH (1685-1750)

Musical score for Intro (from Toccato and Fugue in D minor), Flute part, measures 1-10. The score is in 4/4 time and D minor. It begins with a dynamic of *f* and includes various articulations such as accents and slurs. The score includes various rhythmic patterns, including eighth and sixteenth notes, and rests. The piece concludes with a dynamic of *ff*.

18 March Funèbre
Lento

FRÉDÉRIC CHOPIN (1810-1849)

Musical score for 'March Funèbre' by Frédéric Chopin, Flute part, measures 1-12. The score is in 4/4 time and B-flat major. It features a slow tempo (Lento). The first staff (measures 1-6) includes a first ending bracket labeled '2'. The second staff (measures 7-11) includes a second ending bracket labeled '9' and dynamic markings of *mf*. The third staff (measures 12) includes a first ending bracket labeled '2'.

19 The Sorcerer's Apprentice
Vivace

PAUL DUKAS (1865-1935)

Musical score for 'The Sorcerer's Apprentice' by Paul Dukas, Flute part, measures 1-19. The score is in 3/8 time and B-flat major. It features a fast tempo (Vivace). The first staff (measures 1-9) includes a dynamic marking of *mp*. The second staff (measures 10-18) includes a circled measure number '10'. The third staff (measures 19) includes a circled measure number '19' and dynamic markings of *f*, *pp*, and *ff*.