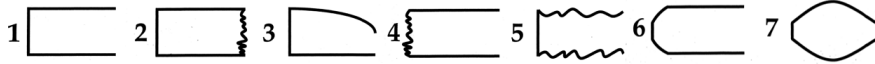


Build-Up For Success!

Concert Band Warm-ups

1 Concert F

- Keep the air steady and smooth. No waves or wiggles!
- Hold for full value, beat 4 goes to 1!
- Release together with an "AH" release
- Have a solid Beginning, Middle, and End or "BME" of each note (avoid sounds like #2-7 below).



Group 1 Brass: Tuba WW: Low WW	Group 2 Baritone Horn	Group 3 Trombone Sax	Group 4 Trumpet Clarinet	Group 5 All Flute
---	------------------------------------	-----------------------------------	---------------------------------------	--------------------------------



2 Articulation

- The tongue moves up and down to the same spot with the same strength each time.
- Match note lengths and tonguing style.
- Keep your jaw still!

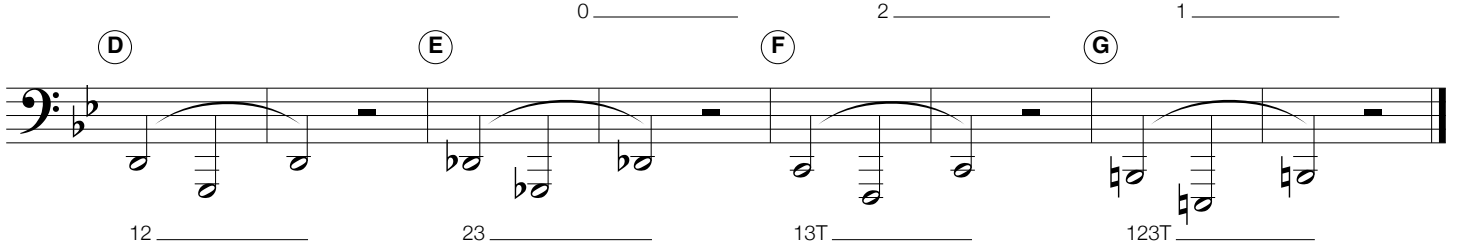
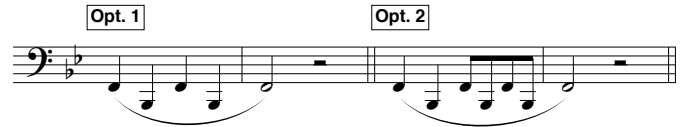


Repeat with NO RESTS

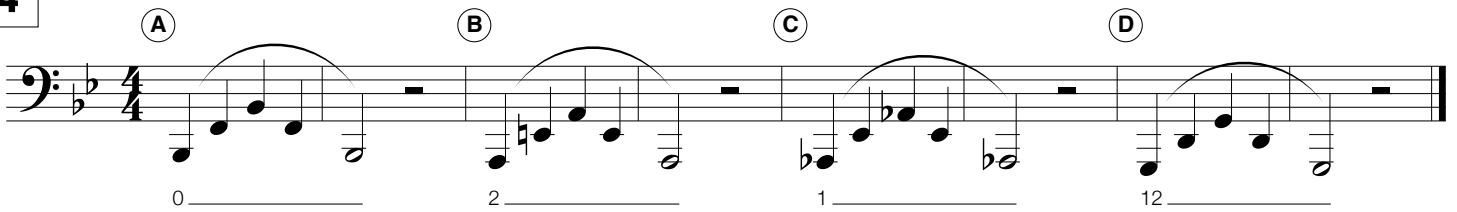


3 Lip Slurs

- Both notes should have equal energy and volume.
- Brass aim down for high and up for low.
- Listen for smooth transitions between the notes.
- Buzz, then play!



4



Checks for Success - Tone

IN TONE + IN TRIO = IN TUNE

- Breathe deep, to your seat, thinking "WOAH" or "OH". Feel cool air move over the tongue.
- Keep the air steady and smooth. No waves or wiggles in the sound.
- Perform each slur in **ONE BREATH!**
- Have a solid "BME" and give all notes equal energy and volume.
- Release together with an "AH" release!
- Practice the exercises at different volumes.

5 Long Tones

Opt. 1 Opt. 2 Opt. 3 Opt. 4

(A) (B) (C) (D)

(E) (F) (G) (H)

6 Remington

Opt. 1 Opt. 2 Opt. 3

(A)

(B)

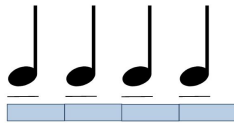
(C)

(D)

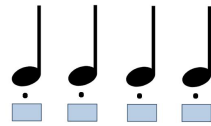
Checks for Success - Articulation

- The tongue should move up & down.
- Match note lengths and style.
- The same part of the tongue hits the same spot with the same strength each time.
- Jaw should be still.

Legato "Doo" or "Too"



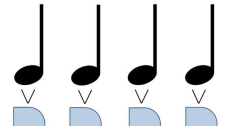
Staccato "Dit" or "Ti"



Marcato "Dah" or "Tah"



Martelato "Dat"



7 Articulation Study

Repeat with no rests

8 5-Note Scale Articulation Workout

9 Match the Model


- ▶ Pick one of the articulations above.
- ▶ A soloist plays each group first, then the ensemble repeats, matching the length and tone of the model.

Solo 1 All Solo 2 All Solo 3 All

10 Expanding Intervals

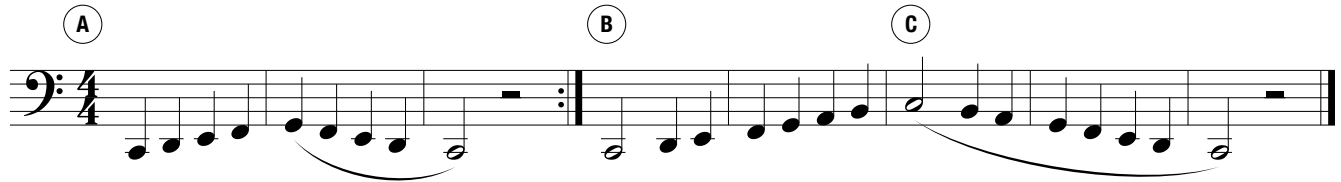
11 16th-Note Tonguing Exercise

Mini Scales

 Circle your key signature for each scale and mark any notes effected by it!

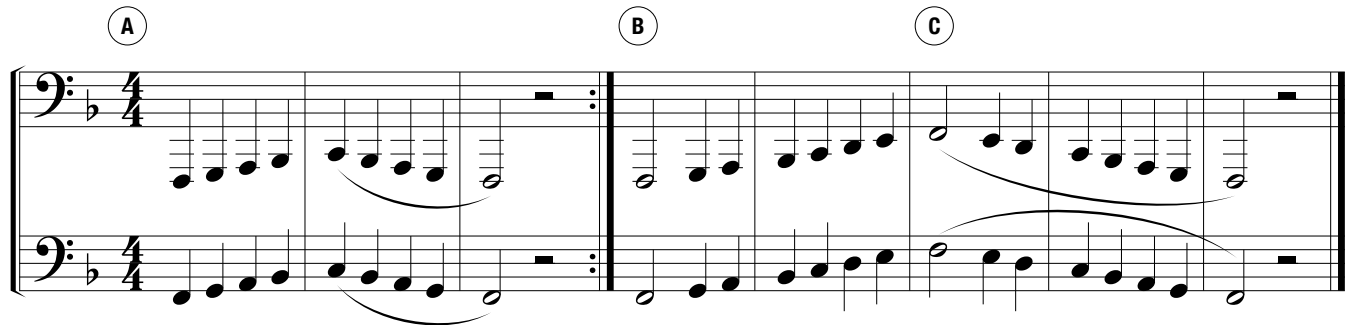
12 C Concert Scale

(A) (B) (C)



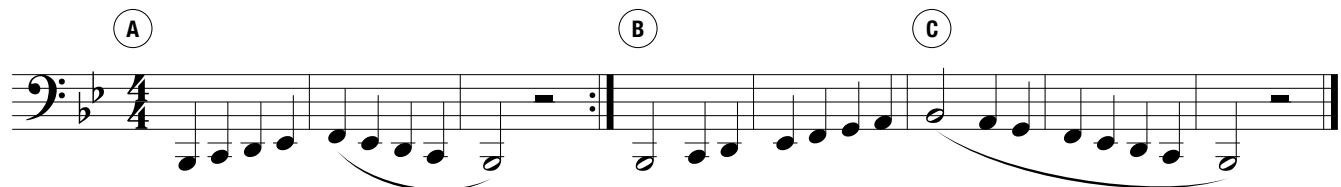
13 F Concert Scale

(A) (B) (C)



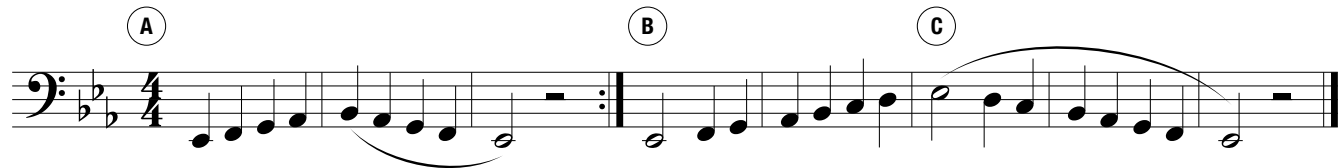
14 Bb Concert Scale

(A) (B) (C)



15 Eb Concert Scale

(A) (B) (C)



16 Ab Concert Scale

(A) (B) (C)

