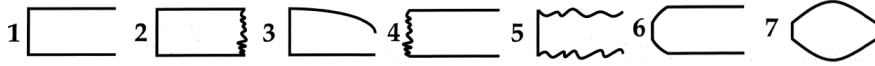


Build-Up For Success!

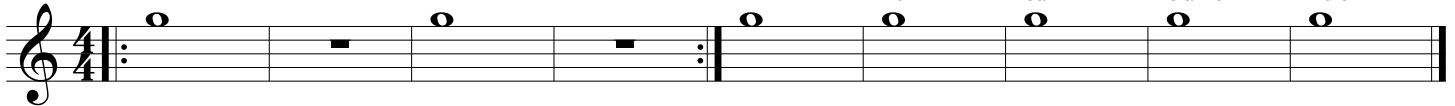
Concert Band Warm-ups

1 Concert F

- Keep the air steady and smooth. No waves or wiggles!
- Hold for full value, beat 4 goes to 1!
- Release together with an "AH" release
- Have a solid Beginning, Middle, and End or "BME" of each note (avoid sounds like #2-7 below).

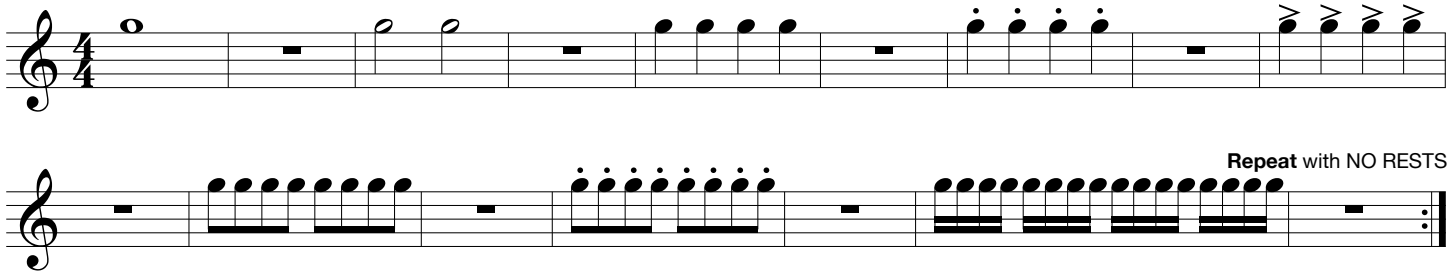


Group 1	Group 2	Group 3	Group 4	Group 5
Brass: Tuba	Baritone	Trombone	Trumpet	All
WW: Low WW	Horn	Sax	Clarinet	Flute



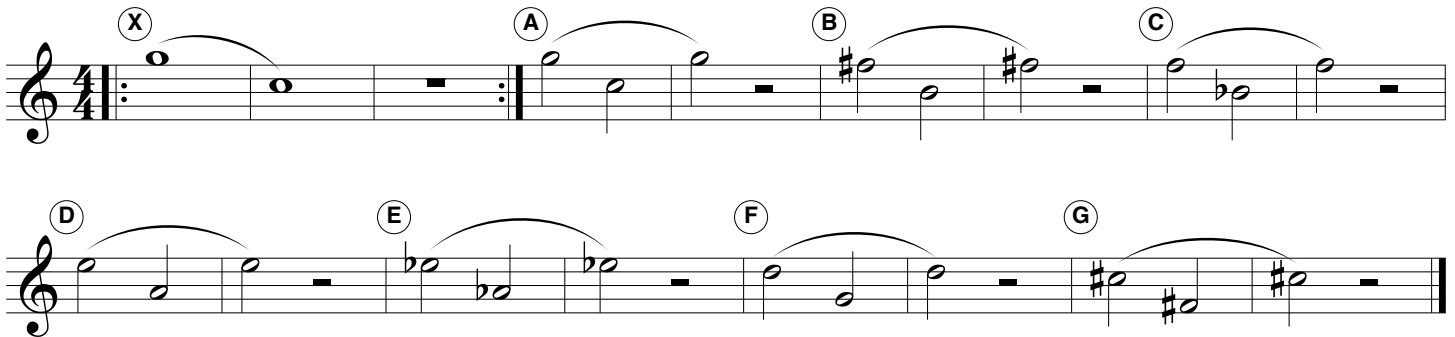
2 Articulation

- The tongue moves up and down to the same spot with the same strength each time.
- Match note lengths and tonguing style.
- Keep your jaw still!

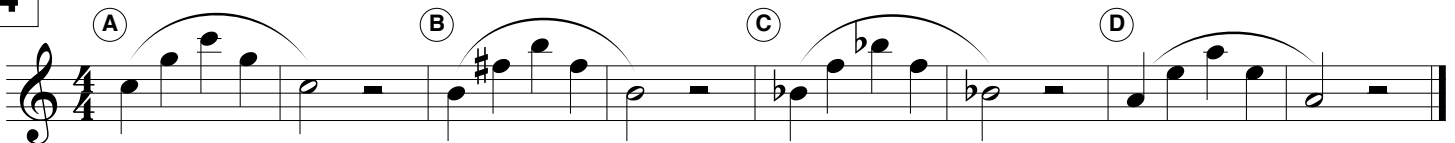


3 Lip Slurs

- Both notes should have equal energy and volume.
- Brass aim down for high and up for low.
- Listen for smooth transitions between the notes.
- Buzz, then play!



4



Checks for Success - Tone

☑ IN TONE + IN TRIO = IN TUNE

- ☑ Breathe deep, to your seat, thinking "WOAH" or "OH". Feel cool air move over the tongue.
- ☑ Keep the air steady and smooth. No waves or wiggles in the sound.
- ☑ Perform each slur in **ONE BREATH!**
- ☑ Have a solid "BME" and give all notes equal energy and volume.
- ☑ Release together with an "AH" release!
- ☑ Practice the exercises at different volumes.

5 Long Tones

Opt. 1 Opt. 2 Opt. 3 Opt. 4

A B C D

E F G H

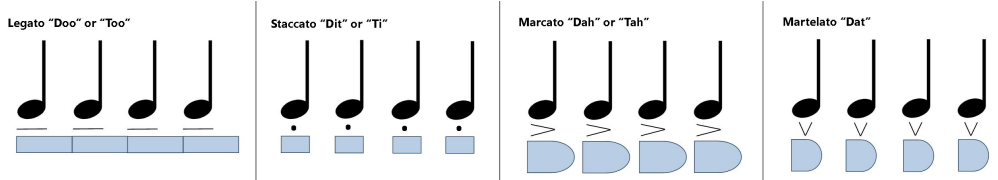
6 Remington

Opt. 1 Opt. 2 Opt. 3

A B C D

Checks for Success - Articulation

- ☑ The tongue should move up & down.
- ☑ Match note lengths and style.
- ☑ The same part of the tongue hits the same spot with the same strength each time.
- ☑ Jaw should be still.



7 Articulation Study

Repeat with no rests

8 5-Note Scale Articulation Workout

9 Match the Model


- ▶ Pick one of the articulations above.
- ▶ A soloist plays each group first, then the ensemble repeats, matching the length and tone of the model.

Solo 1 All Solo 2 All Solo 3 All

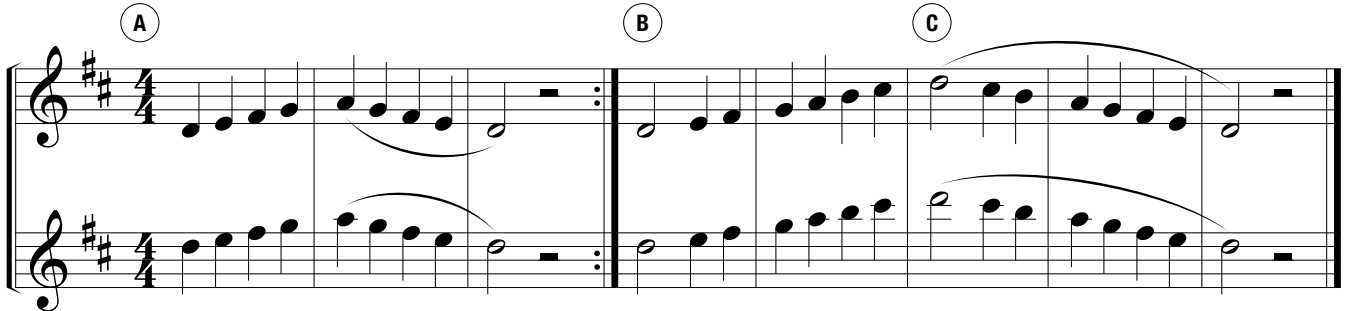
10 Expanding Intervals

11 16th-Note Tonguing Exercise

Mini Scales

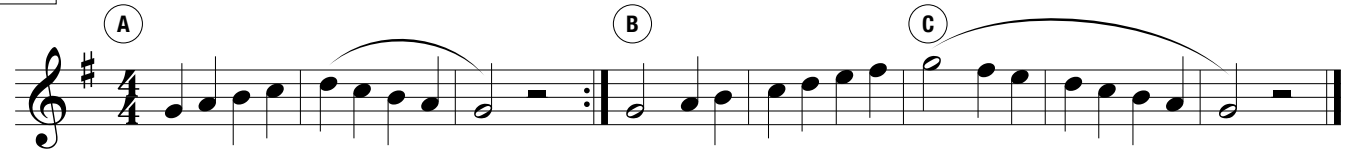
 Circle your key signature for each scale and mark any notes effected by it!

12 C Concert Scale



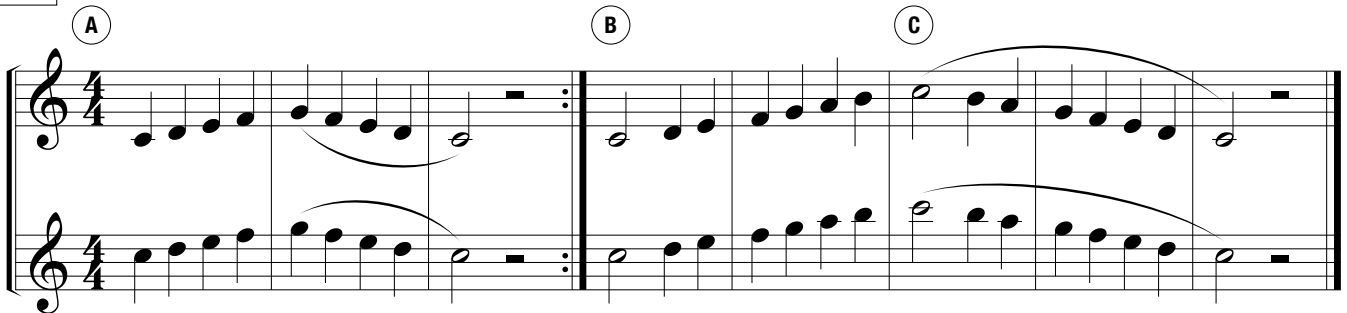
Musical notation for the C Concert Scale in 4/4 time. The scale is written in treble clef with a key signature of one sharp (F#). It consists of two staves. The first staff contains the melody, and the second staff contains the bass line. The scale is divided into three sections labeled A, B, and C. Section A is the first measure, B is the second measure, and C is the third measure. Each section is marked with a circled letter above the staff.

13 F Concert Scale



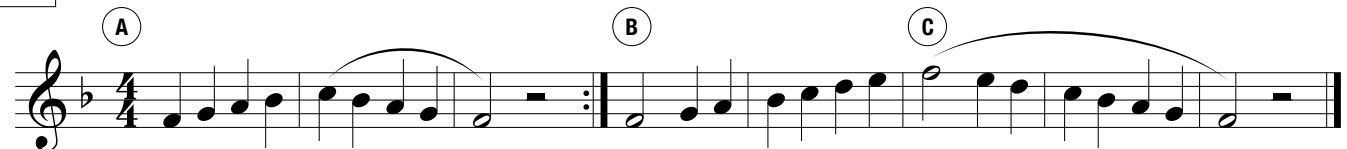
Musical notation for the F Concert Scale in 4/4 time. The scale is written in treble clef with a key signature of one sharp (F#). It consists of one staff. The scale is divided into three sections labeled A, B, and C. Section A is the first measure, B is the second measure, and C is the third measure. Each section is marked with a circled letter above the staff.

14 Bb Concert Scale



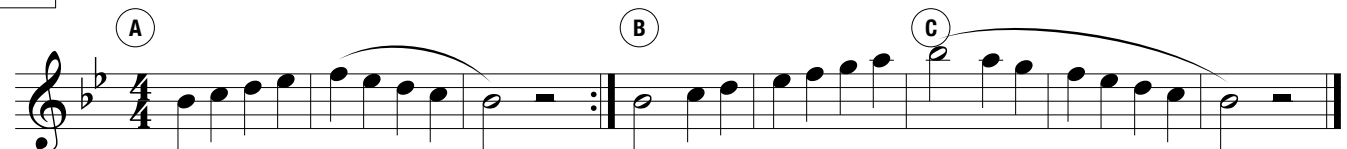
Musical notation for the Bb Concert Scale in 4/4 time. The scale is written in treble clef with a key signature of two flats (Bb and Eb). It consists of two staves. The first staff contains the melody, and the second staff contains the bass line. The scale is divided into three sections labeled A, B, and C. Section A is the first measure, B is the second measure, and C is the third measure. Each section is marked with a circled letter above the staff.

15 Eb Concert Scale




Musical notation for the Eb Concert Scale in 4/4 time. The scale is written in treble clef with a key signature of three flats (Bb, Eb, and Ab). It consists of one staff. The scale is divided into three sections labeled A, B, and C. Section A is the first measure, B is the second measure, and C is the third measure. Each section is marked with a circled letter above the staff.

16 Ab Concert Scale



Musical notation for the Ab Concert Scale in 4/4 time. The scale is written in treble clef with a key signature of four flats (Bb, Eb, Ab, and Db). It consists of one staff. The scale is divided into three sections labeled A, B, and C. Section A is the first measure, B is the second measure, and C is the third measure. Each section is marked with a circled letter above the staff.

Full Scales

 Circle your key signature for each scale and mark any notes effected by it!

17 C Concert Scale

(A)

(B)

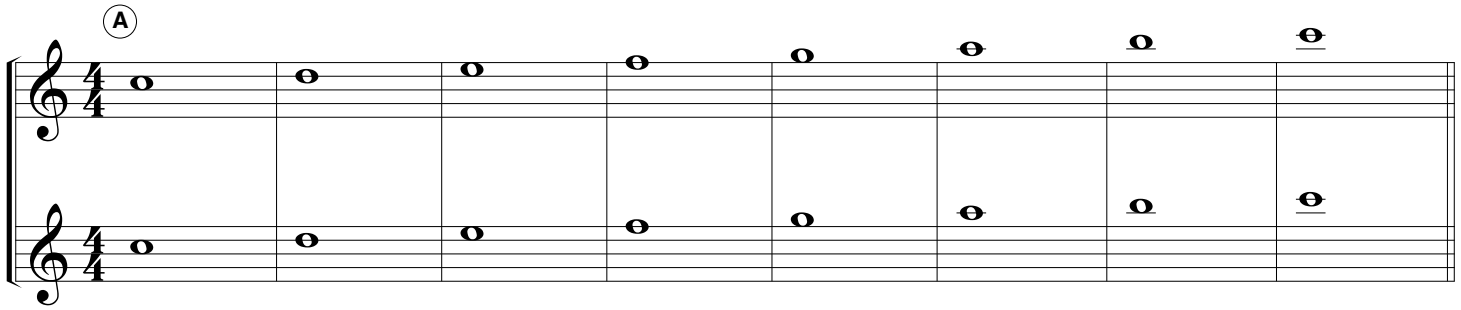
18 F Concert Scale

(A)

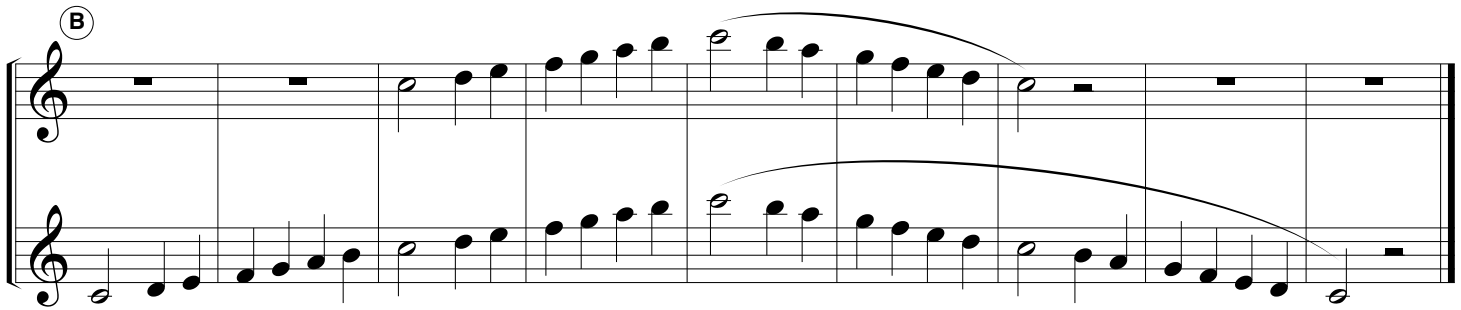
(B)

19 Bb Concert Scale

(A)

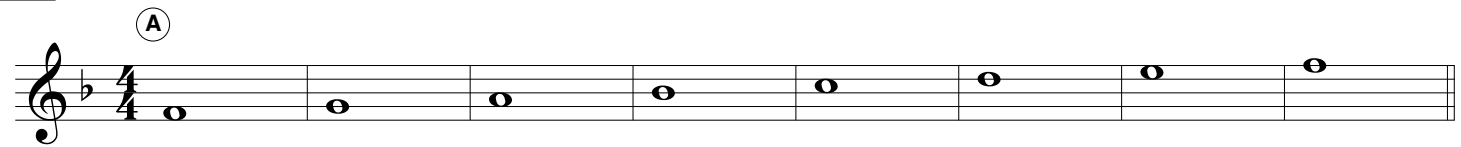


(B)

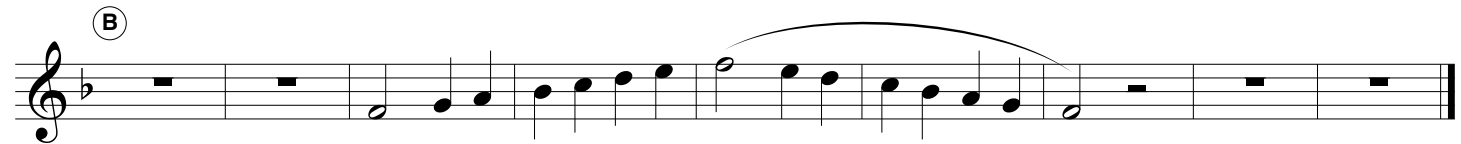


20 Eb Concert Scale

(A)

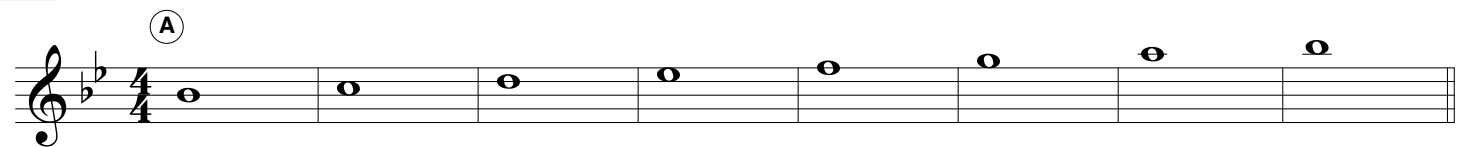


(B)

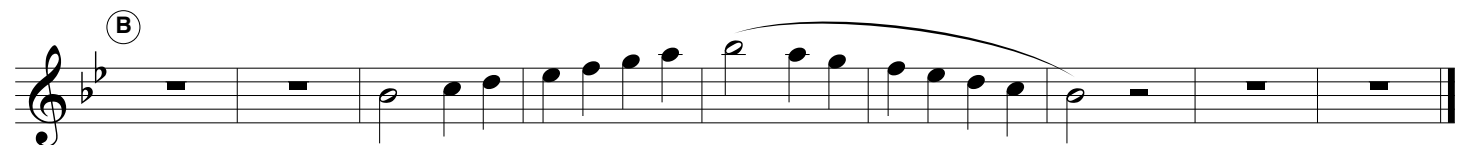


21 Ab Concert Scale

(A)



(B)



22 Bb Chromatic Scale

Musical notation for Exercise 22: Bb Chromatic Scale. The exercise is written in 4/4 time and consists of four staves of music. The first staff starts on G4. The second staff continues from G4 to Bb4. The third staff continues from Bb4 to G5. The fourth staff continues from G5 to Bb5. Each staff contains six measures of music, with each measure containing a single half note.

23 Bb Chromatic Scale in Scale Rhythm

Musical notation for Exercise 23: Bb Chromatic Scale in Scale Rhythm. The exercise is written in 4/4 time and consists of a single staff of music. The first half of the exercise (measures 1-8) is an ascending chromatic scale from G4 to G5. The second half (measures 9-16) is a descending chromatic scale from G5 to G4. The notes are beamed together in eighth notes, with a fermata over the final G4.

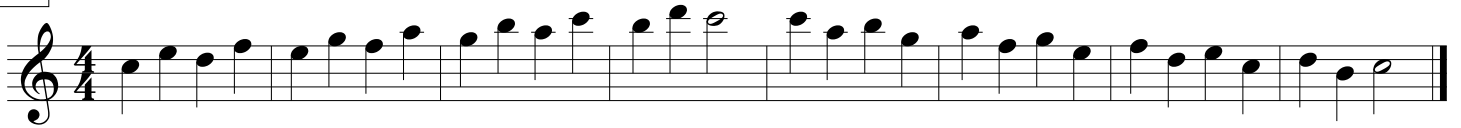
▶▶▶ **Finger Busters in the Key of Bb** ◀◀◀

24

Musical notation for Exercise 24: Finger Busters in the Key of Bb. The exercise is written in 4/4 time and consists of three staves of music. The first staff is marked with a circled 'A' and contains a sequence of eighth notes: G4, A4, Bb4, C5, D5, E5, F5, G5, followed by rests. The second staff is marked with a circled 'B' and contains a sequence of eighth notes: G5, F5, E5, D5, C5, Bb4, A4, G4, followed by rests. The third staff continues the sequence with eighth notes: G4, F4, E4, D4, C4, Bb3, A3, G3, followed by rests.

Build-Up For Success!
Tenor Sax pg. 9

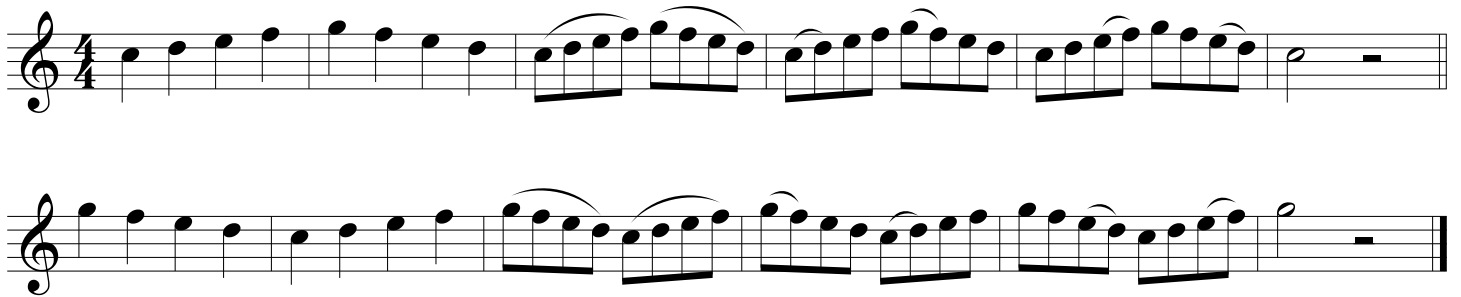
25



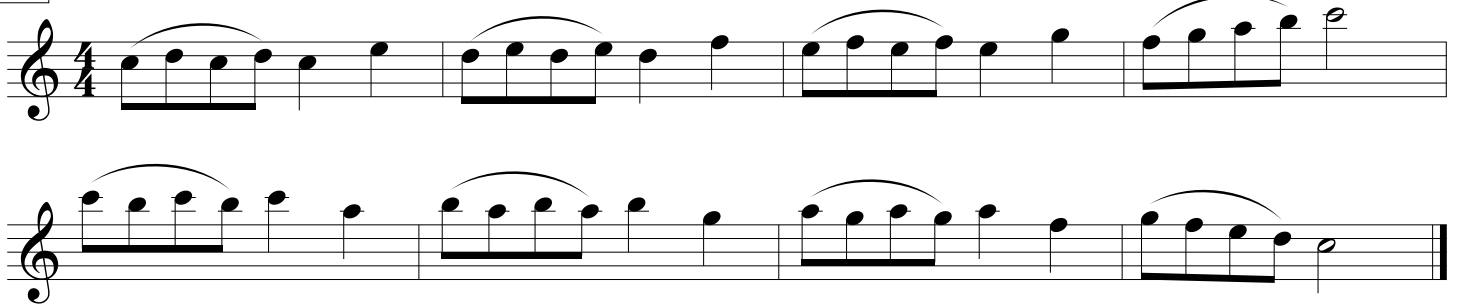
26



27



28

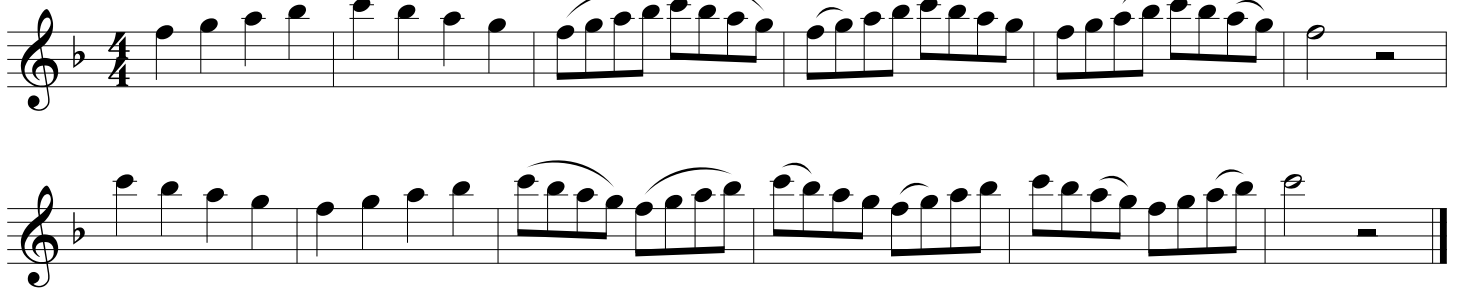


▶▶▶ Finger Busters in the Key of Eb ◀◀◀

29



30



Build-Up For Success!
Tenor Sax pg. 10

31

Exercise 31: Tenor Sax, 4/4 time, one flat key signature. The exercise consists of two staves. The first staff contains four measures of eighth-note runs with slurs. The second staff contains four measures of sixteenth-note runs with slurs.

▶▶▶ Finger Busters in the Key of F ◀◀◀

32

Exercise 32: Tenor Sax, 4/4 time, one sharp key signature. The exercise consists of a single staff with a continuous eighth-note run.

33

Exercise 33: Tenor Sax, 4/4 time, one sharp key signature. The exercise consists of a single staff with a continuous sixteenth-note run.

34

Exercise 34: Tenor Sax, 4/4 time, one sharp key signature. The exercise consists of two staves. The first staff contains eighth-note runs with slurs. The second staff contains sixteenth-note runs with slurs.

35

Exercise 35: Tenor Sax, 4/4 time, one sharp key signature. The exercise consists of two staves. The first staff contains eighth-note runs with slurs. The second staff contains sixteenth-note runs with slurs.