

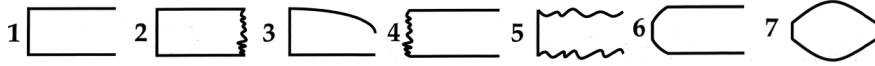


# Build-Up For Success!

## Concert Band Warm-ups

### 1 Concert F

- Keep the air steady and smooth. No waves or wiggles!
- Hold for full value, beat 4 goes to 1!
- Release together with an "AH" release
- Have a solid Beginning, Middle, and End or "BME" of each note (avoid sounds like #2-7 below).



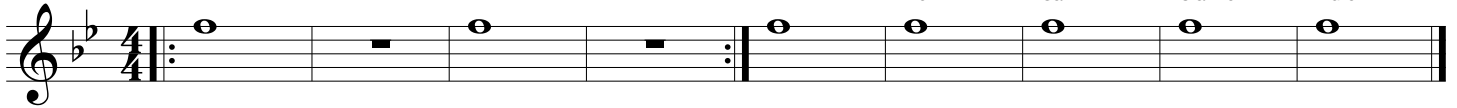
Group 1  
Brass: Tuba  
WW: Low WW

Group 2  
Baritone  
Horn

Group 3  
Trombone  
Sax

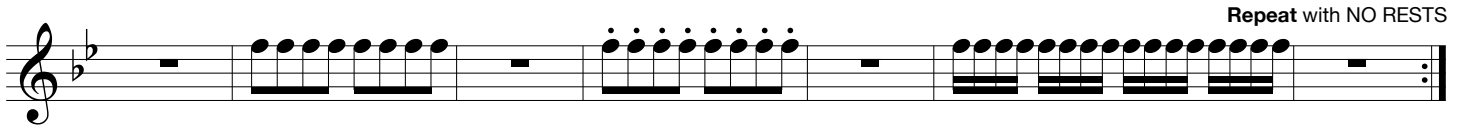
Group 4  
Trumpet  
Clarinet

Group 5  
All  
Flute



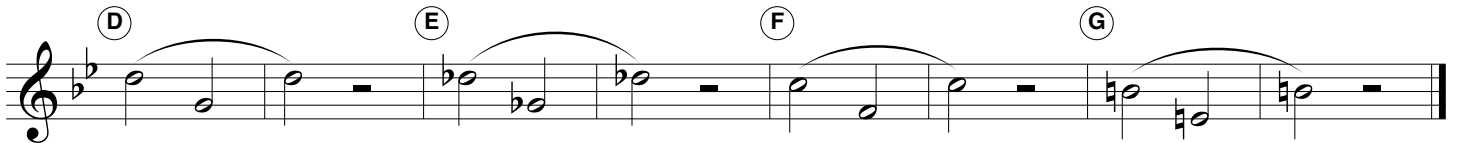
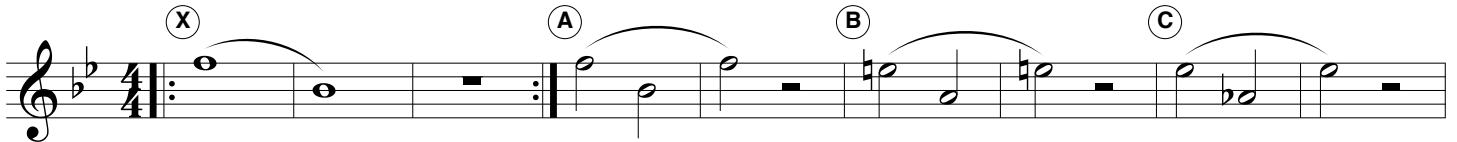
### 2 Articulation

- The tongue moves up and down to the same spot with the same strength each time.
- Match note lengths and tonguing style.
- Keep your jaw still!

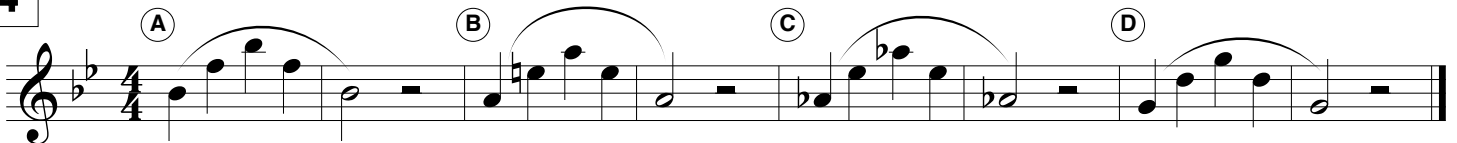


### 3 Lip Slurs

- Both notes should have equal energy and volume.
- Brass aim down for high and up for low.
- Listen for smooth transitions between the notes.
- Buzz, then play!



### 4



## Checks for Success - Tone

### ☑ IN TONE + IN TRIO = IN TUNE

- ☑ Breathe deep, to your seat, thinking "WOAH" or "OH". Feel cool air move over the tongue.
- ☑ Keep the air steady and smooth. No waves or wiggles in the sound.
- ☑ Perform each slur in **ONE BREATH!**
- ☑ Have a solid "BME" and give all notes equal energy and volume.
- ☑ Release together with an "AH" release!
- ☑ Practice the exercises at different volumes.

## 5 Long Tones

Opt. 1      Opt. 2      Opt. 3      Opt. 4

A      B      C      D

E      F      G      H

## 6 Remington

Opt. 1      Opt. 2      Opt. 3

A

B

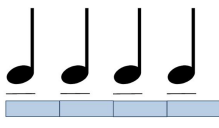
C

D

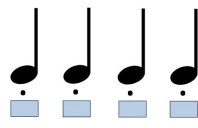
## Checks for Success - Articulation

- ☑ The tongue should move up & down.
- ☑ Match note lengths and style.
- ☑ The same part of the tongue hits the same spot with the same strength each time.
- ☑ Jaw should be still.

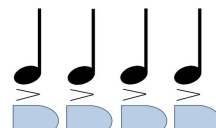
Legato "Doo" or "Too"



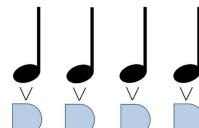
Staccato "Dit" or "Ti"



Marcato "Dah" or "Tah"



Martelato "Dat"



### 7 Articulation Study

### 8 5-Note Scale Articulation Workout


### 9 Match the Model

- ▶ Pick one of the articulations above.
- ▶ A soloist plays each group first, then the ensemble repeats, matching the length and tone of the model.

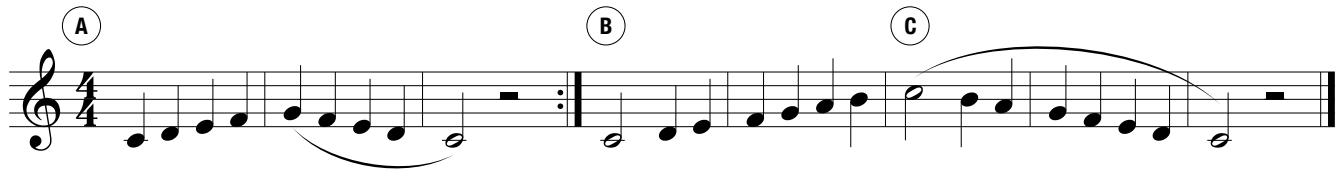
### 10 Expanding Intervals

### 11 16th-Note Tonguing Exercise

## Mini Scales

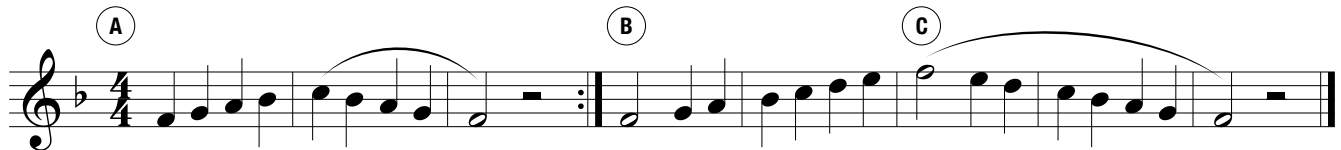
 Circle your key signature for each scale and mark any notes effected by it!

### 12 C Concert Scale



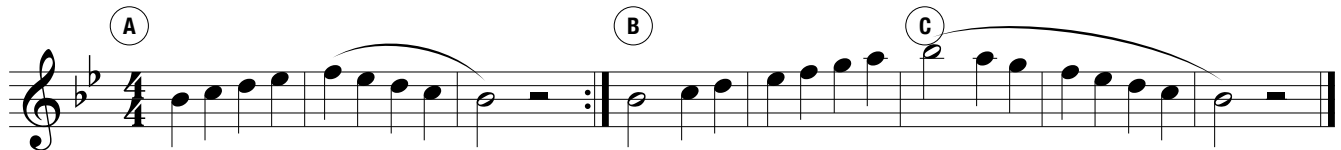
Musical notation for the C Concert Scale in 4/4 time. The scale is written on a treble clef staff. It consists of two measures: the first measure contains the ascending scale (C4 to G4) and the second measure contains the descending scale (G4 to C4). The notes are: C4, D4, E4, F4, G4, F4, E4, D4, C4. The key signature is C major. Three circled letters (A, B, C) are placed above the staff at the beginning, middle, and end of the scale respectively.

### 13 F Concert Scale



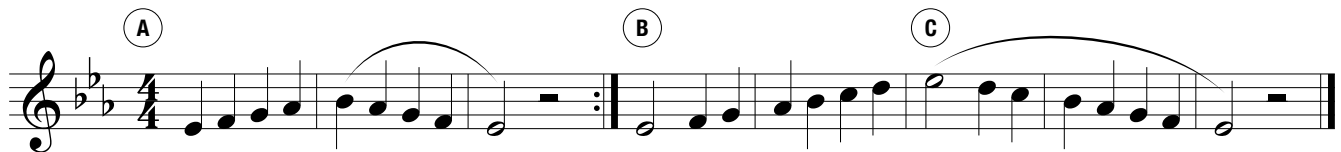
Musical notation for the F Concert Scale in 4/4 time. The scale is written on a treble clef staff with one flat in the key signature (F major). It consists of two measures: the first measure contains the ascending scale (F4 to C5) and the second measure contains the descending scale (C5 to F4). The notes are: F4, G4, A4, Bb4, C5, Bb4, A4, G4, F4. The key signature is F major. Three circled letters (A, B, C) are placed above the staff at the beginning, middle, and end of the scale respectively.

### 14 Bb Concert Scale



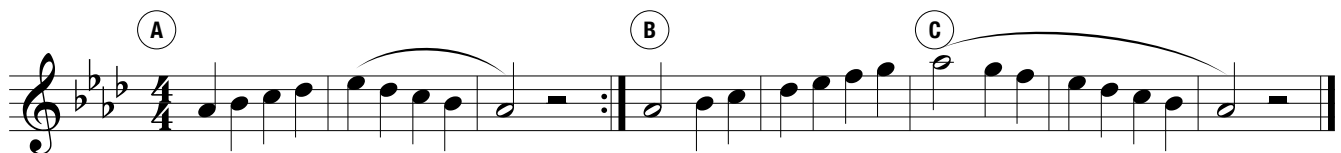
Musical notation for the Bb Concert Scale in 4/4 time. The scale is written on a treble clef staff with two flats in the key signature (Bb major). It consists of two measures: the first measure contains the ascending scale (Bb4 to F5) and the second measure contains the descending scale (F5 to Bb4). The notes are: Bb4, C5, D5, Eb5, F5, Eb5, D5, C5, Bb4. The key signature is Bb major. Three circled letters (A, B, C) are placed above the staff at the beginning, middle, and end of the scale respectively.

### 15 Eb Concert Scale



Musical notation for the Eb Concert Scale in 4/4 time. The scale is written on a treble clef staff with three flats in the key signature (Eb major). It consists of two measures: the first measure contains the ascending scale (Eb4 to Bb5) and the second measure contains the descending scale (Bb5 to Eb4). The notes are: Eb4, F4, G4, Ab4, Bb4, Ab4, G4, F4, Eb4. The key signature is Eb major. Three circled letters (A, B, C) are placed above the staff at the beginning, middle, and end of the scale respectively.

### 16 Ab Concert Scale



Musical notation for the Ab Concert Scale in 4/4 time. The scale is written on a treble clef staff with four flats in the key signature (Ab major). It consists of two measures: the first measure contains the ascending scale (Ab4 to D6) and the second measure contains the descending scale (D6 to Ab4). The notes are: Ab4, Bb4, C5, Db5, Eb5, D6, C5, Bb4, Ab4. The key signature is Ab major. Three circled letters (A, B, C) are placed above the staff at the beginning, middle, and end of the scale respectively.