

Build-Up For Success!

Concert Band Warm-ups

1 Concert F

- Keep the air steady and smooth. No waves or wiggles!
- Hold for full value, beat 4 goes to 1!
- Release together with an "AH" release
- Have a solid Beginning, Middle, and End or "BME" of each note (avoid sounds like #2-7 below).



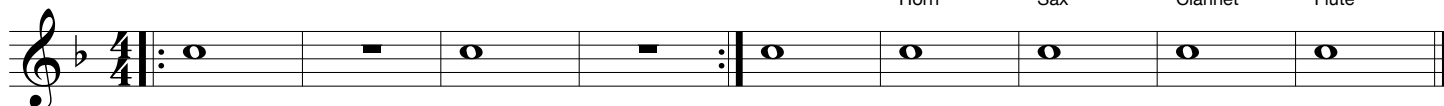
Group 1
Brass: Tuba
WW: Low WW

Group 2
Baritone
Horn

Group 3
Trombone
Sax

Group 4
Trumpet
Clarinet

Group 5
All
Flute

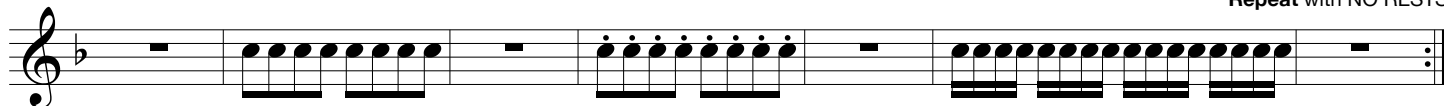


2 Articulation

- The tongue moves up and down to the same spot with the same strength each time.
- Match note lengths and tonguing style.
- Keep your jaw still!

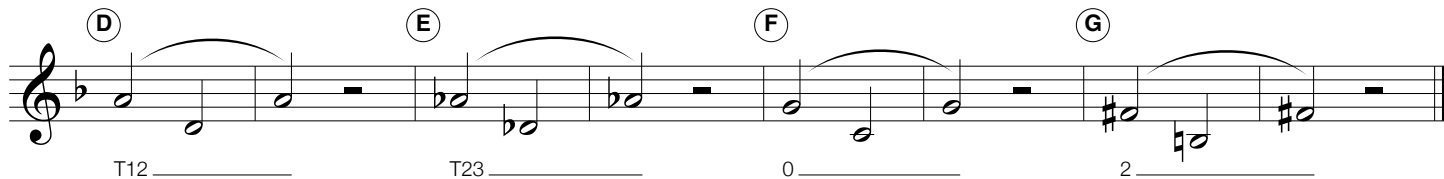
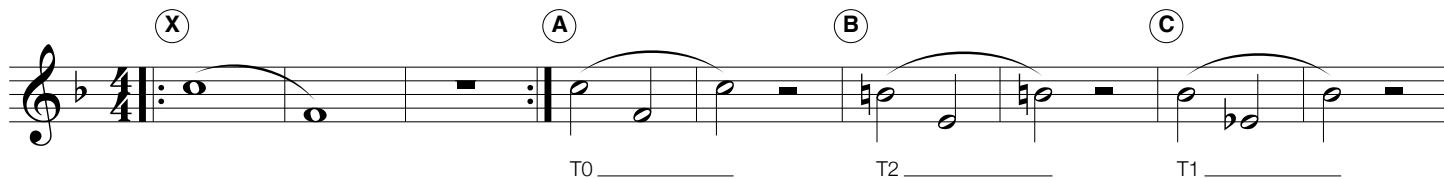


Repeat with NO RESTS

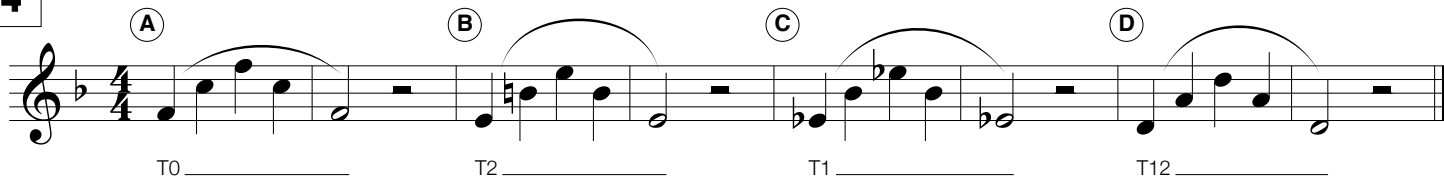


3 Lip Slurs

- Both notes should have equal energy and volume.
- Brass aim down for high and up for low.
- Listen for smooth transitions between the notes.
- Buzz, then play!



4



Checks for Success - Tone

☑ IN TONE + IN TRIO = IN TUNE

- ☑ Breathe deep, to your seat, thinking "WOAH" or "OH". Feel cool air move over the tongue.
- ☑ Keep the air steady and smooth. No waves or wiggles in the sound.
- ☑ Perform each slur in **ONE BREATH!**
- ☑ Have a solid "BME" and give all notes equal energy and volume.
- ☑ Release together with an "AH" release!
- ☑ Practice the exercises at different volumes.

5 Long Tones

Opt. 1 Opt. 2 Opt. 3 Opt. 4

(A) (B) (C) (D)

(E) (F) (G) (H)

6 Remington

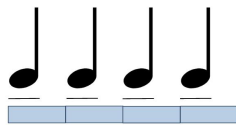
Opt. 1 Opt. 2 Opt. 3

(A) (B) (C) (D) (OR) play Letter C

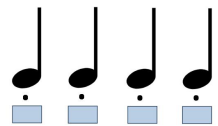
Checks for Success - Articulation

- The tongue should move up & down.
- Match note lengths and style.
- The same part of the tongue hits the same spot with the same strength each time.
- Jaw should be still.

Legato "Doo" or "Too"



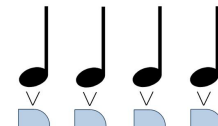
Staccato "Dit" or "Ti"



Marcato "Dah" or "Tah"



Martelato "Dat"



7 Articulation Study

8 5-Note Scale Articulation Workout


9 Match the Model

- ▶ Pick one of the articulations above.
- ▶ A soloist plays each group first, then the ensemble repeats, matching the length and tone of the model.

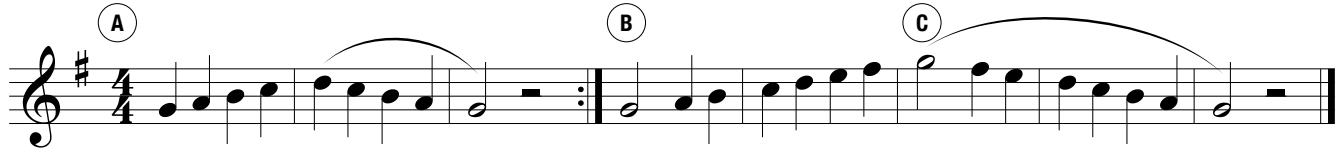
10 Expanding Intervals

11 16th-Note Tonguing Exercise

Mini Scales

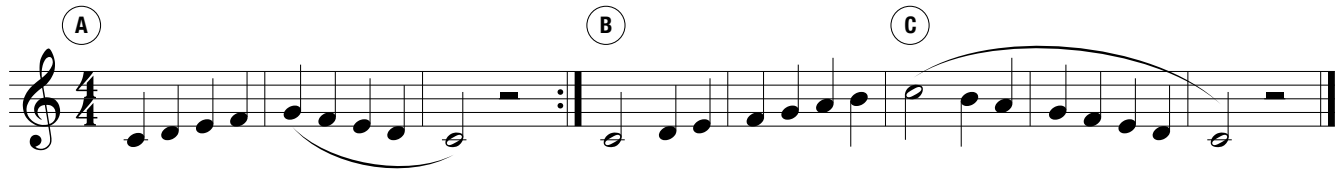
 Circle your key signature for each scale and mark any notes effected by it!

12 C Concert Scale



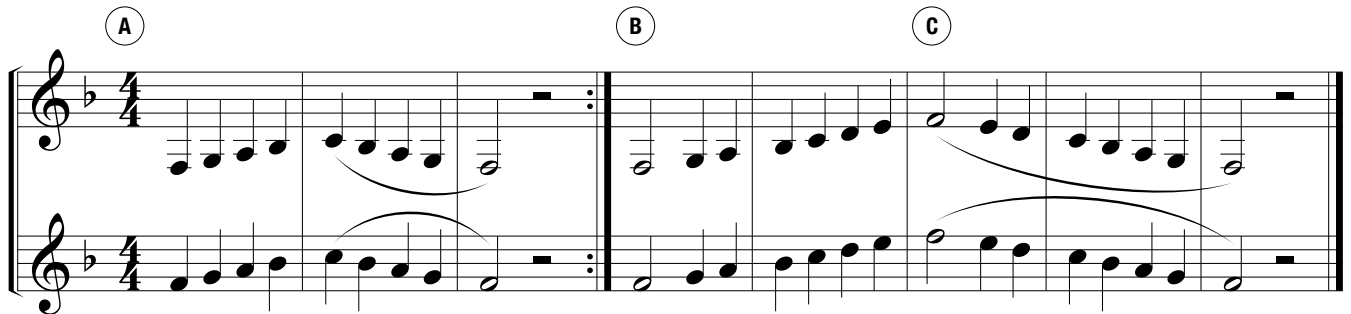
Musical notation for the C Concert Scale in 4/4 time. The scale is written on a single staff in treble clef with a key signature of one sharp (F#). It consists of two measures: the first measure contains the ascending scale (C4, D4, E4, F#4, G4, A4, B4, C5) and the second measure contains the descending scale (C5, B4, A4, G4, F#4, E4, D4, C4). The first measure is marked with a circled 'A', the second with a circled 'B', and the third with a circled 'C'.

13 F Concert Scale



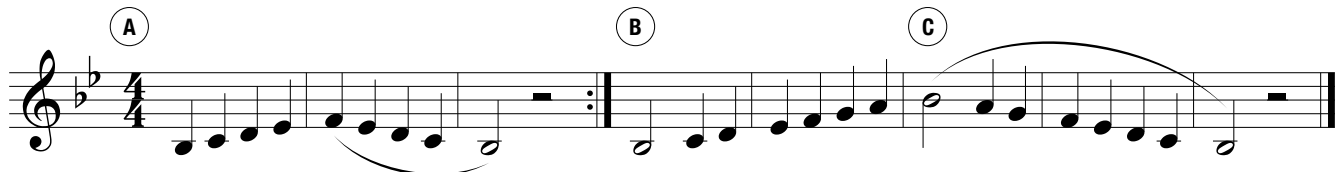
Musical notation for the F Concert Scale in 4/4 time. The scale is written on a single staff in treble clef with a key signature of one flat (F). It consists of two measures: the first measure contains the ascending scale (F4, G4, A4, Bb4, C5, D5, E5, F6) and the second measure contains the descending scale (F6, E5, D5, C5, Bb4, A4, G4, F4). The first measure is marked with a circled 'A', the second with a circled 'B', and the third with a circled 'C'.

14 Bb Concert Scale



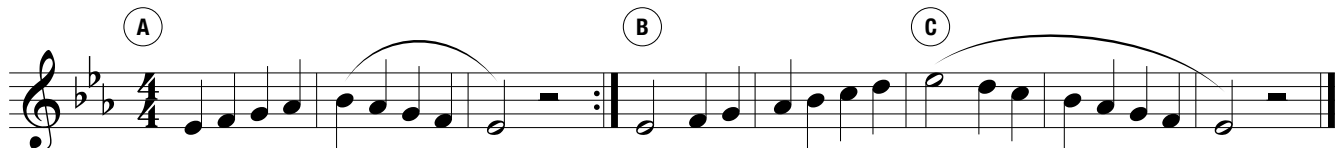
Musical notation for the Bb Concert Scale in 4/4 time. The scale is written on two staves in treble clef with a key signature of two flats (Bb). The first staff contains the ascending scale (Bb4, C5, D5, Eb5, F6, G6, Ab6, Bb7) and the second staff contains the descending scale (Bb7, Ab6, G6, F6, Eb5, D5, C5, Bb4). The first measure is marked with a circled 'A', the second with a circled 'B', and the third with a circled 'C'.

15 Eb Concert Scale



Musical notation for the Eb Concert Scale in 4/4 time. The scale is written on a single staff in treble clef with a key signature of three flats (Eb). It consists of two measures: the first measure contains the ascending scale (Eb4, F4, G4, Ab4, Bb4, C5, D5, Eb6) and the second measure contains the descending scale (Eb6, D5, C5, Bb4, Ab4, G4, F4, Eb4). The first measure is marked with a circled 'A', the second with a circled 'B', and the third with a circled 'C'.

16 Ab Concert Scale



Musical notation for the Ab Concert Scale in 4/4 time. The scale is written on a single staff in treble clef with a key signature of four flats (Ab). It consists of two measures: the first measure contains the ascending scale (Ab4, Bb4, C5, Db5, Eb5, F6, G6, Ab7) and the second measure contains the descending scale (Ab7, G6, F6, Eb5, Db5, C5, Bb4, Ab4). The first measure is marked with a circled 'A', the second with a circled 'B', and the third with a circled 'C'.