

Build-Up For Success!

Concert Band Warm-ups

1 Concert F

- Keep the air steady and smooth. No waves or wiggles!
- Hold for full value, beat 4 goes to 1!
- Release together with an "AH" release
- Have a solid Beginning, Middle, and End or "BME" of each note (avoid sounds like #2-7 below).



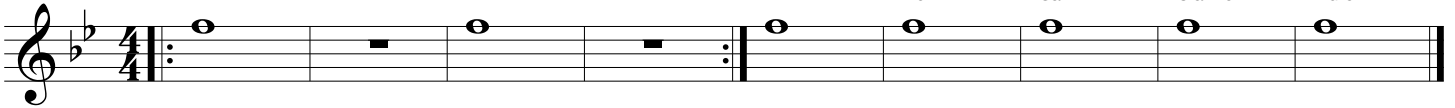
Group 1
Brass: Tuba
WW: Low WW

Group 2
Baritone
Horn

Group 3
Trombone
Sax

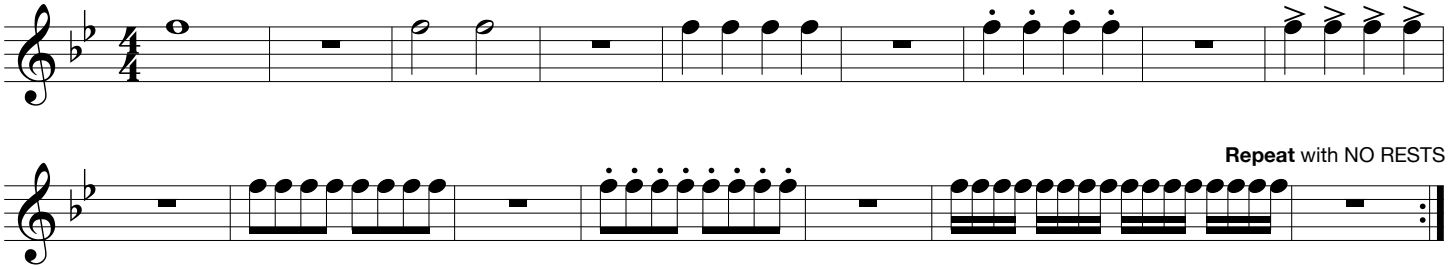
Group 4
Trumpet
Clarinet

Group 5
All
Flute



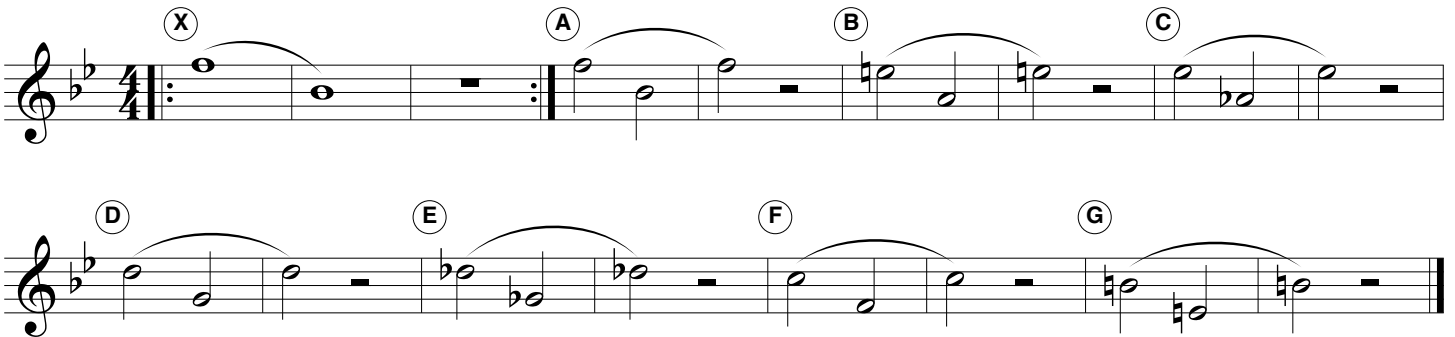
2 Articulation

- The tongue moves up and down to the same spot with the same strength each time.
- Match note lengths and tonguing style.
- Keep your jaw still!

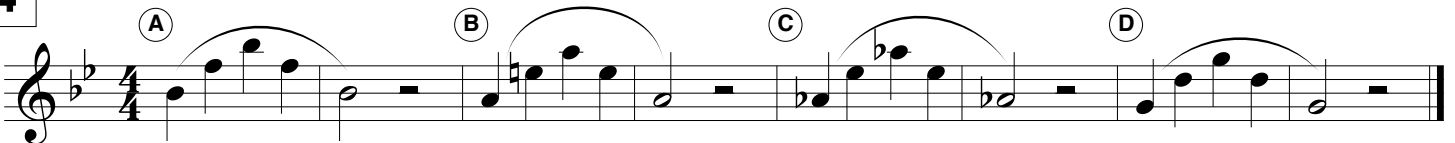


3 Lip Slurs

- Both notes should have equal energy and volume.
- Brass aim down for high and up for low.
- Listen for smooth transitions between the notes.
- Buzz, then play!



4



Checks for Success - Tone

☑ IN TONE + IN TRIO = IN TUNE

- ☑ Breathe deep, to your seat, thinking "WOAH" or "OH". Feel cool air move over the tongue.
- ☑ Keep the air steady and smooth. No waves or wiggles in the sound.
- ☑ Perform each slur in **ONE BREATH!**
- ☑ Have a solid "BME" and give all notes equal energy and volume.
- ☑ Release together with an "AH" release!
- ☑ Practice the exercises at different volumes.

5 Long Tones

Opt. 1 Opt. 2 Opt. 3 Opt. 4

A B C D

E F G H

6 Remington

Opt. 1 Opt. 2 Opt. 3

A

B

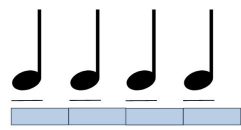
C

D

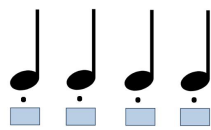
Checks for Success - Articulation

- ☑ The tongue should move up & down.
- ☑ Match note lengths and style.
- ☑ The same part of the tongue hits the same spot with the same strength each time.
- ☑ Jaw should be still.

Legato "Doo" or "Too"



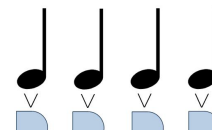
Staccato "Dit" or "TI"



Marcato "Dah" or "Tah"



Martelato "Dat"



7 Articulation Study

8 5-Note Scale Articulation Workout

9 Match the Model

- ▶ Pick one of the articulations above.
- ▶ A soloist plays each group first, then the ensemble repeats, matching the length and tone of the model.

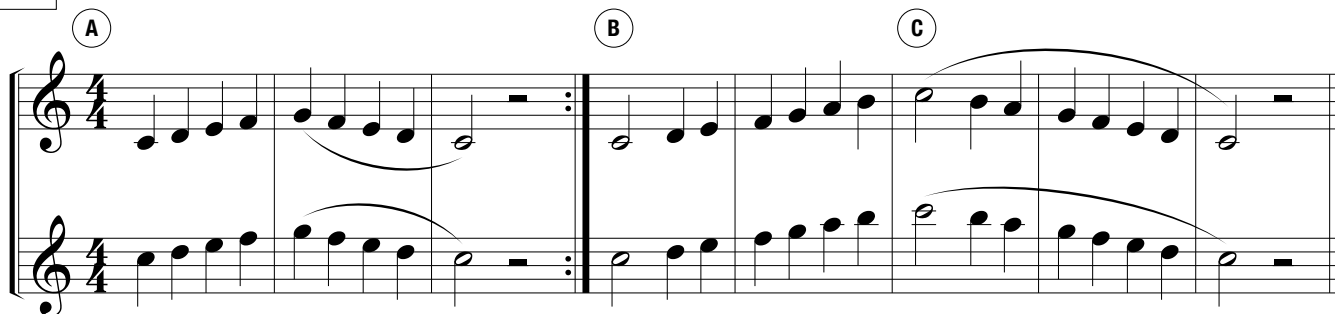
10 Expanding Intervals

11 16th-Note Tonguing Exercise

Mini Scales

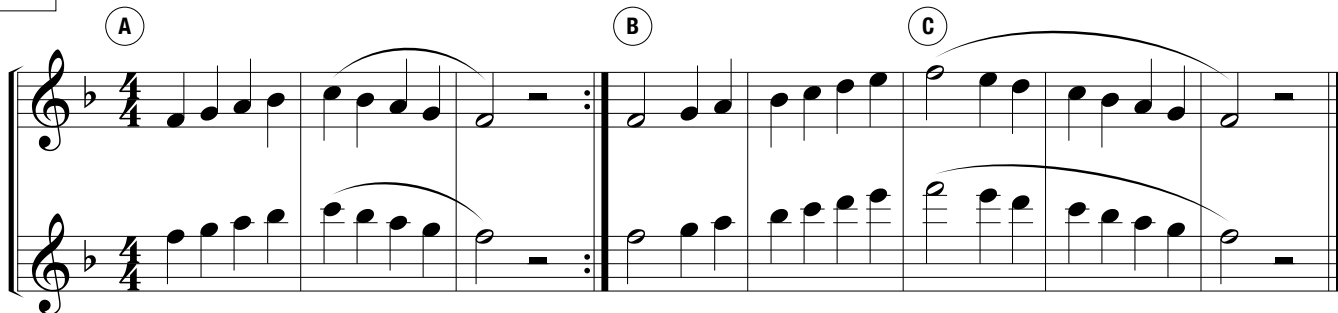
 Circle your key signature for each scale and mark any notes effected by it!

12 C Concert Scale



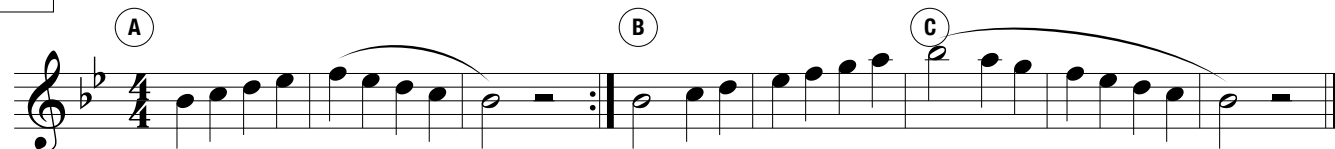
Musical score for the C Concert Scale in 4/4 time. The score is written for two staves. The first staff contains the upper line of the scale, and the second staff contains the lower line. The scale is divided into three sections labeled A, B, and C. Section A covers the first four measures, B covers the next four measures, and C covers the final four measures. Each section is marked with a circled letter above the first measure. The key signature is C major, and the time signature is 4/4.

13 F Concert Scale



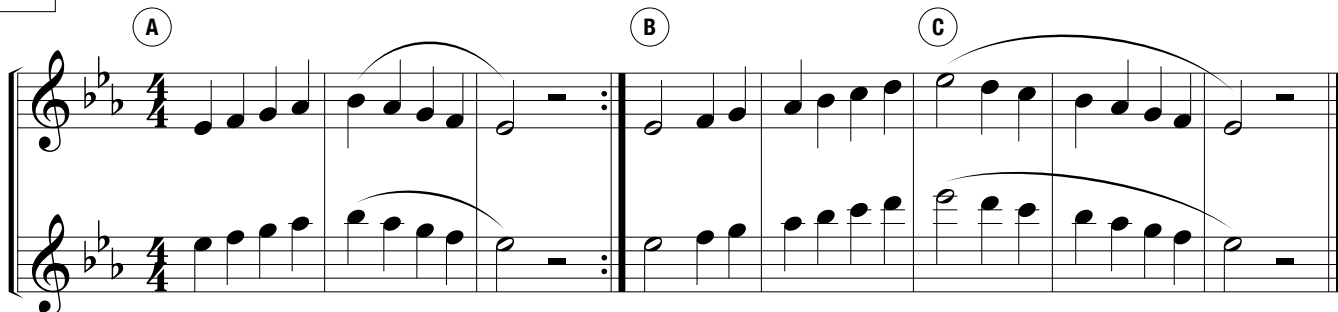
Musical score for the F Concert Scale in 4/4 time. The score is written for two staves. The first staff contains the upper line of the scale, and the second staff contains the lower line. The scale is divided into three sections labeled A, B, and C. Section A covers the first four measures, B covers the next four measures, and C covers the final four measures. Each section is marked with a circled letter above the first measure. The key signature is F major (one flat), and the time signature is 4/4.

14 Bb Concert Scale



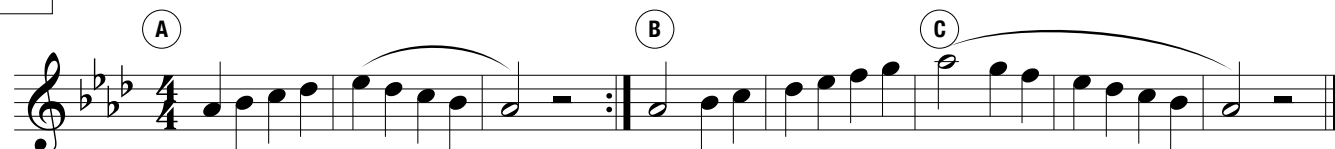
Musical score for the Bb Concert Scale in 4/4 time. The score is written for one staff. The scale is divided into three sections labeled A, B, and C. Section A covers the first four measures, B covers the next four measures, and C covers the final four measures. Each section is marked with a circled letter above the first measure. The key signature is Bb major (two flats), and the time signature is 4/4.

15 Eb Concert Scale



Musical score for the Eb Concert Scale in 4/4 time. The score is written for two staves. The first staff contains the upper line of the scale, and the second staff contains the lower line. The scale is divided into three sections labeled A, B, and C. Section A covers the first four measures, B covers the next four measures, and C covers the final four measures. Each section is marked with a circled letter above the first measure. The key signature is Eb major (three flats), and the time signature is 4/4.

16 Ab Concert Scale



Musical score for the Ab Concert Scale in 4/4 time. The score is written for one staff. The scale is divided into three sections labeled A, B, and C. Section A covers the first four measures, B covers the next four measures, and C covers the final four measures. Each section is marked with a circled letter above the first measure. The key signature is Ab major (four flats), and the time signature is 4/4.