

Build-Up For Success!

Concert Band Warm-ups

1 Concert F

- Keep the air steady and smooth. No waves or wiggles!
- Hold for full value, beat 4 goes to 1!
- Release together with an "AH" release
- Have a solid Beginning, Middle, and End or "BME" of each note (avoid sounds like #2-7 below).

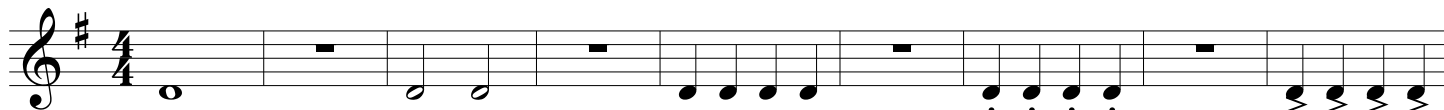


Group 1	Group 2	Group 3	Group 4	Group 5
Brass: Tuba	Baritone	Trombone	Trumpet	All
WW: Low WW	Horn	Sax	Clarinet	Flute



2 Articulation

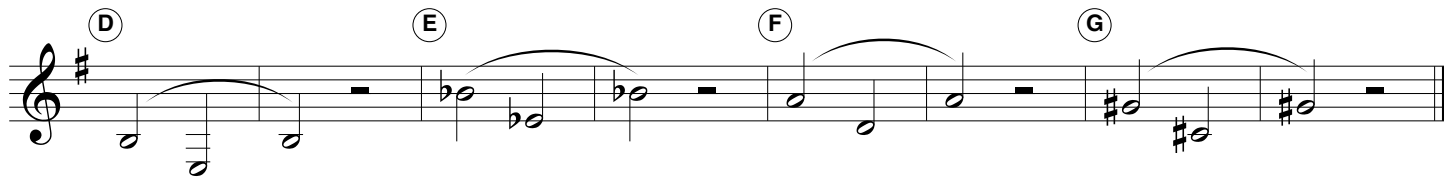
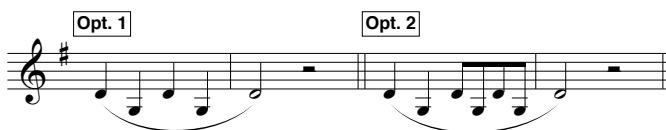
- The tongue moves up and down to the same spot with the same strength each time.
- Match note lengths and tonguing style.
- Keep your jaw still!



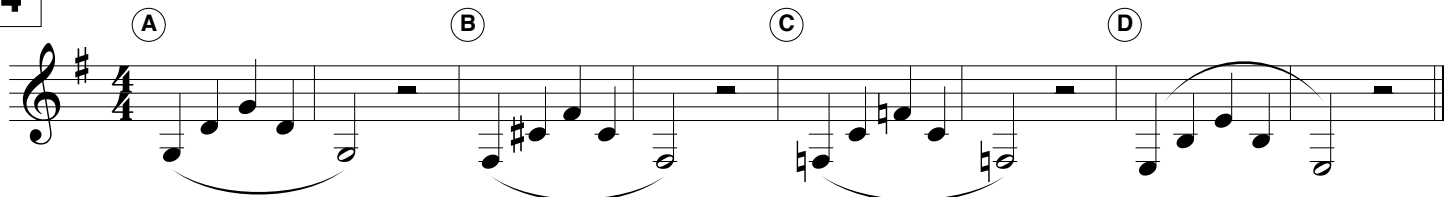
Repeat with NO RESTS

3 Lip Slurs

- Both notes should have equal energy and volume.
- Brass aim down for high and up for low.
- Listen for smooth transitions between the notes.
- Buzz, then play!



4



Checks for Success - Tone

☑ IN TONE + IN TRIO = IN TUNE

- ☑ Breathe deep, to your seat, thinking "WOAH" or "OH". Feel cool air move over the tongue.
- ☑ Keep the air steady and smooth. No waves or wiggles in the sound.
- ☑ Perform each slur in **ONE BREATH!**
- ☑ Have a solid "BME" and give all notes equal energy and volume.
- ☑ Release together with an "AH" release!
- ☑ Practice the exercises at different volumes.

5 Long Tones

Opt. 1 Opt. 2 Opt. 3 Opt. 4

A B C D

E F G H

6 Remington

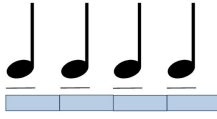
Opt. 1 Opt. 2 Opt. 3

A B C D E

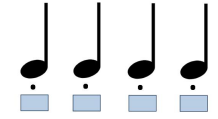
Checks for Success - Articulation

- The tongue should move up & down.
- Match note lengths and style.
- The same part of the tongue hits the same spot with the same strength each time.
- Jaw should be still.

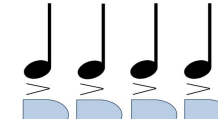
Legato "Doo" or "Too"



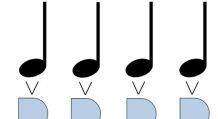
Staccato "Dit" or "Ti"



Marcato "Dah" or "Tah"



Martelato "Dat"



7 Articulation Study

Repeat with no rests

8 5-Note Scale Articulation Workout

9 Match the Model


- ▶ Pick one of the articulations above.
- ▶ A soloist plays each group first, then the ensemble repeats, matching the length and tone of the model.

Solo 1 All Solo 2 All Solo 3 All

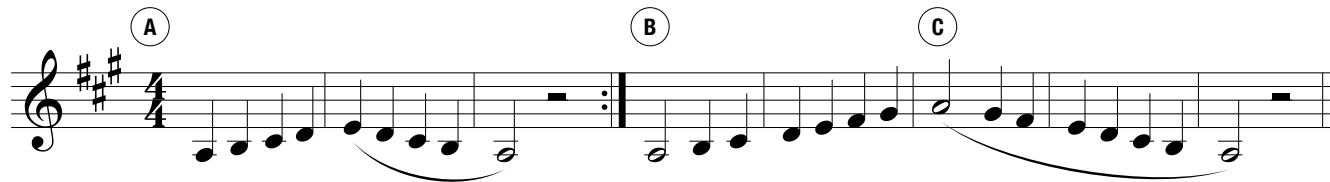
10 Expanding Intervals

11 16th-Note Tonguing Exercise

Mini Scales

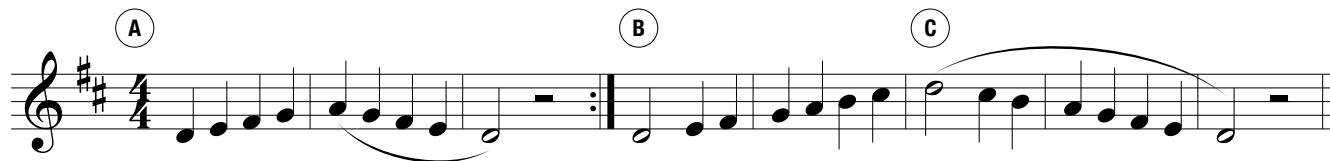
 Circle your key signature for each scale and mark any notes effected by it!

12 C Concert Scale



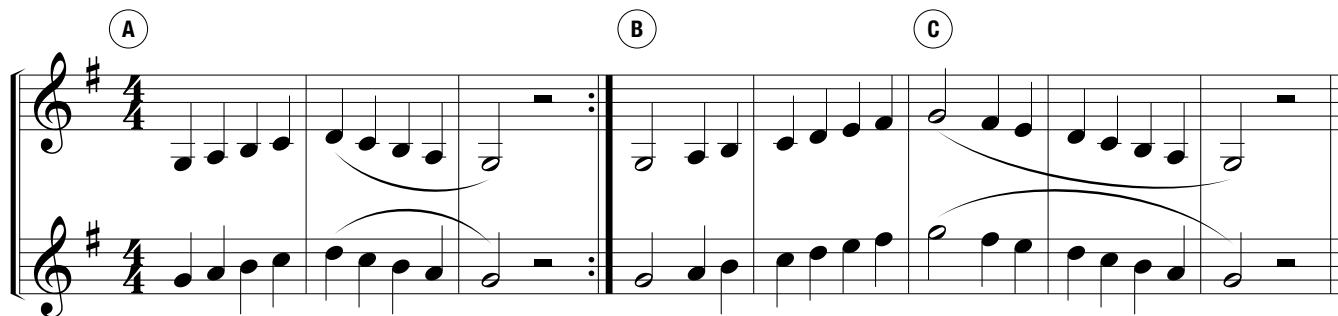
Musical notation for the C Concert Scale in 4/4 time. The scale is written on a single staff. It is divided into three sections labeled A, B, and C. Section A (measures 1-4) is the ascending scale: C4, D4, E4, F4, G4, A4, B4, C5. Section B (measures 5-8) is the descending scale: C5, B4, A4, G4, F4, E4, D4, C4. Section C (measures 9-12) is the ascending scale: C4, D4, E4, F4, G4, A4, B4, C5. The key signature is one sharp (F#).

13 F Concert Scale



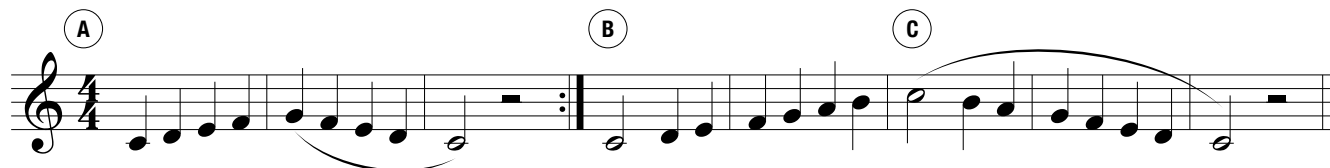
Musical notation for the F Concert Scale in 4/4 time. The scale is written on a single staff. It is divided into three sections labeled A, B, and C. Section A (measures 1-4) is the ascending scale: F4, G4, A4, B4, C5, B4, A4, G4, F4. Section B (measures 5-8) is the descending scale: F4, G4, A4, B4, C5, B4, A4, G4, F4. Section C (measures 9-12) is the ascending scale: F4, G4, A4, B4, C5, B4, A4, G4, F4. The key signature is two sharps (F# and C#).

14 Bb Concert Scale



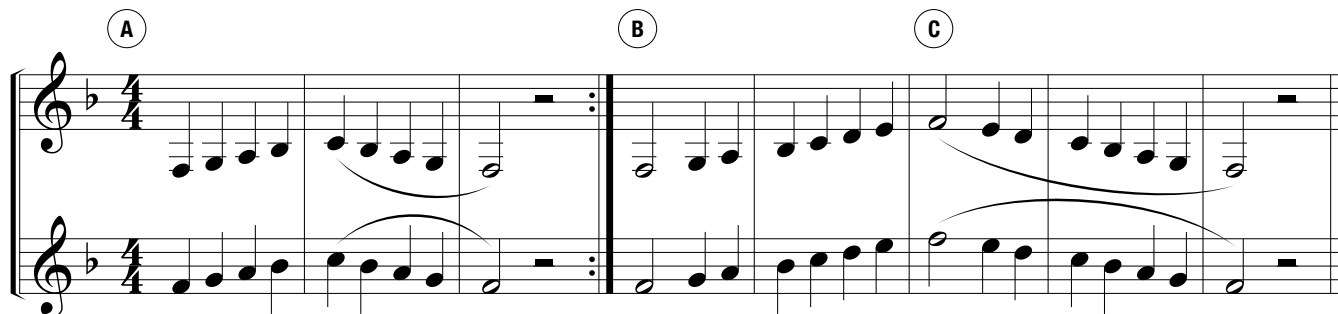
Musical notation for the Bb Concert Scale in 4/4 time. The scale is written on two staves. It is divided into three sections labeled A, B, and C. Section A (measures 1-4) is the ascending scale: Bb3, C4, D4, Eb4, F4, G4, Ab4, Bb4. Section B (measures 5-8) is the descending scale: Bb4, Ab4, G4, F4, Eb4, D4, C4, Bb3. Section C (measures 9-12) is the ascending scale: Bb3, C4, D4, Eb4, F4, G4, Ab4, Bb4. The key signature is two sharps (F# and C#).

15 Eb Concert Scale



Musical notation for the Eb Concert Scale in 4/4 time. The scale is written on a single staff. It is divided into three sections labeled A, B, and C. Section A (measures 1-4) is the ascending scale: Eb3, F3, G3, Ab3, Bb3, C4, D4, Eb4. Section B (measures 5-8) is the descending scale: Eb4, D4, C4, Bb3, Ab3, G3, F3, Eb3. Section C (measures 9-12) is the ascending scale: Eb3, F3, G3, Ab3, Bb3, C4, D4, Eb4. The key signature is one sharp (F#).

16 Ab Concert Scale



Musical notation for the Ab Concert Scale in 4/4 time. The scale is written on two staves. It is divided into three sections labeled A, B, and C. Section A (measures 1-4) is the ascending scale: Ab3, Bb3, C4, D4, Eb4, F4, G4, Ab4. Section B (measures 5-8) is the descending scale: Ab4, G4, F4, Eb4, D4, C4, Bb3, Ab3. Section C (measures 9-12) is the ascending scale: Ab3, Bb3, C4, D4, Eb4, F4, G4, Ab4. The key signature is one sharp (F#).