

Build-Up For Success!

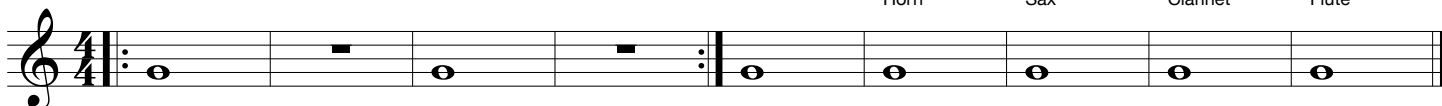
Concert Band Warm-ups

1 Concert F

- Keep the air steady and smooth. No waves or wiggles!
- Hold for full value, beat 4 goes to 1!
- Release together with an "AH" release
- Have a solid Beginning, Middle, and End or "BME" of each note (avoid sounds like #2-7 below).

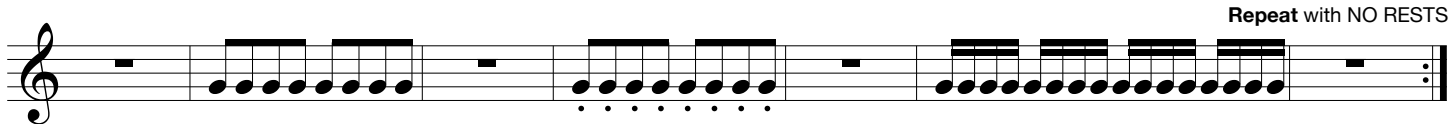


Group 1	Group 2	Group 3	Group 4	Group 5
Brass: Tuba	Baritone	Trombone	Trumpet	All
WW: Low WW	Horn	Sax	Clarinet	Flute



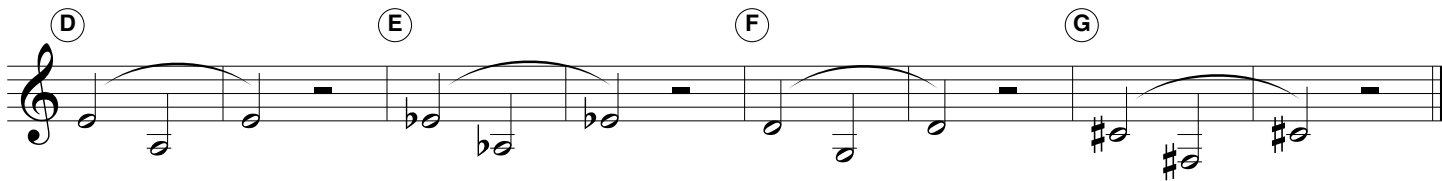
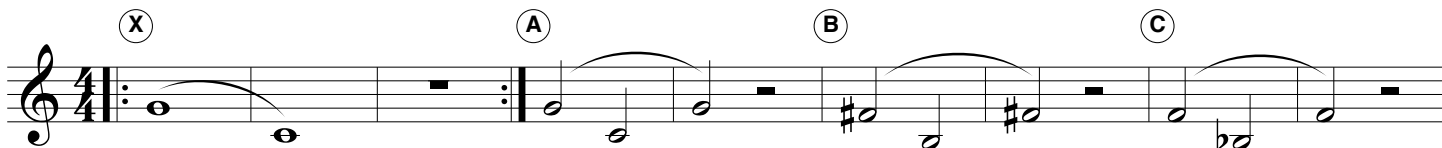
2 Articulation

- The tongue moves up and down to the same spot with the same strength each time.
- Match note lengths and tonguing style.
- Keep your jaw still!

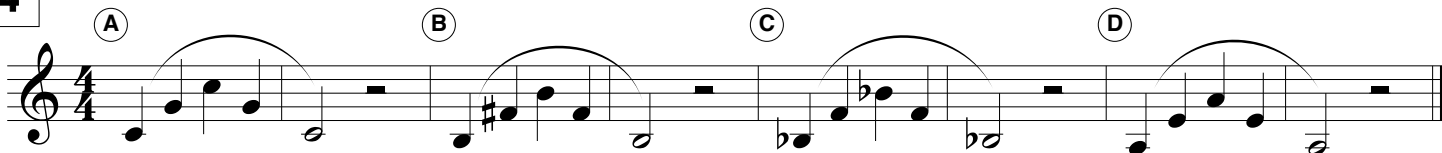


3 Lip Slurs

- Both notes should have equal energy and volume.
- Brass aim down for high and up for low.
- Listen for smooth transitions between the notes.
- Buzz, then play!



4



Checks for Success - Tone

IN TONE + IN TRIO = IN TUNE

- Breathe deep, to your seat, thinking "WOAH" or "OH". Feel cool air move over the tongue.
- Keep the air steady and smooth. No waves or wiggles in the sound.
- Perform each slur in **ONE BREATH!**
- Have a solid "BME" and give all notes equal energy and volume.
- Release together with an "AH" release!
- Practice the exercises at different volumes.

5 Long Tones

Opt. 1 Opt. 2 Opt. 3 Opt. 4

A B C D

E F G H

6 Remington

Opt. 1 Opt. 2 Opt. 3

A

B

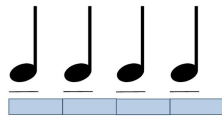
C

D

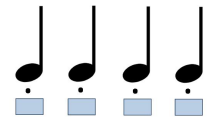
Checks for Success - Articulation

- The tongue should move up & down.
- Match note lengths and style.
- The same part of the tongue hits the same spot with the same strength each time.
- Jaw should be still.

Legato "Doo" or "Too"



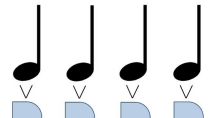
Staccato "Dit" or "Ti"



Marcato "Dah" or "Tah"



Martelato "Dat"



7 Articulation Study

8 5-Note Scale Articulation Workout

9 Match the Model


- ▶ Pick one of the articulations above.
- ▶ A soloist plays each group first, then the ensemble repeats, matching the length and tone of the model.

Solo 1 All Solo 2 All Solo 3 All

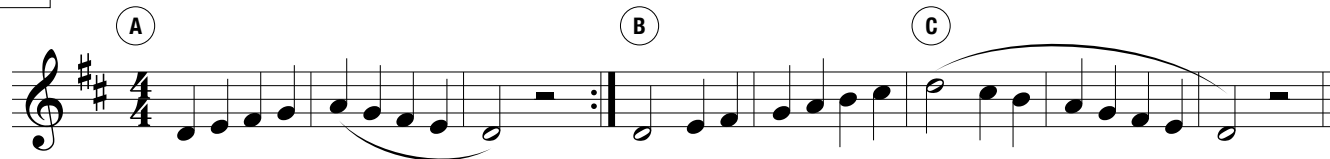
10 Expanding Intervals

11 16th-Note Tonguing Exercise

Mini Scales

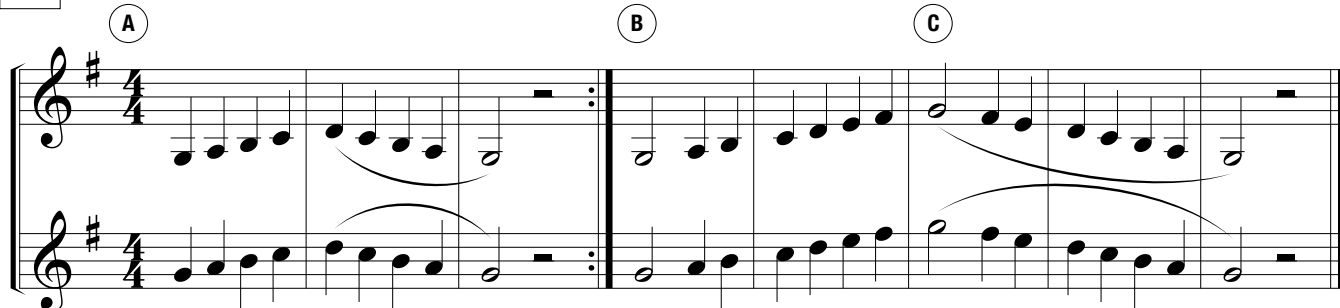
 Circle your key signature for each scale and mark any notes effected by it!

12 C Concert Scale



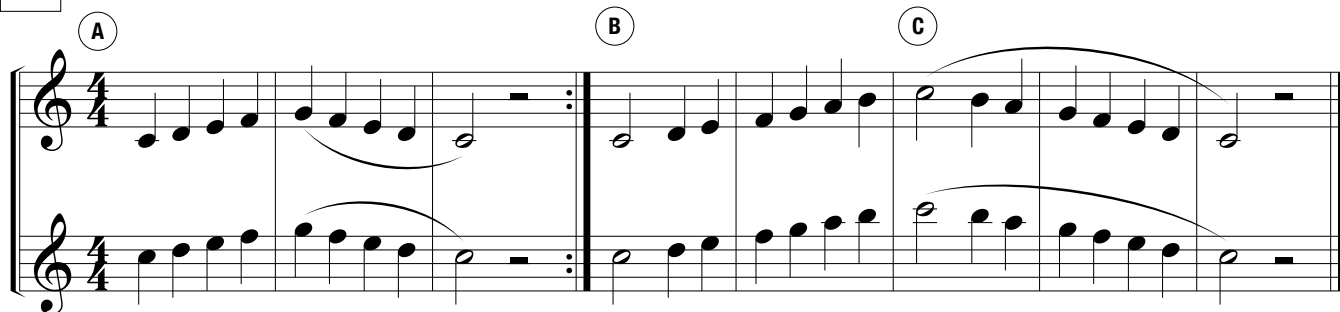
Musical notation for the C Concert Scale in 4/4 time. The scale is written on a single staff. It consists of two parts: an ascending scale (A) and a descending scale (B). The key signature is one sharp (F#). The notes are: C4, D4, E4, F#4, G4, A4, B4, C5 (ascending); C5, B4, A4, G4, F#4, E4, D4, C4 (descending). A circled 'A' is above the first measure, a circled 'B' is above the first measure of the descending scale, and a circled 'C' is above the first measure of the descending scale.

13 F Concert Scale



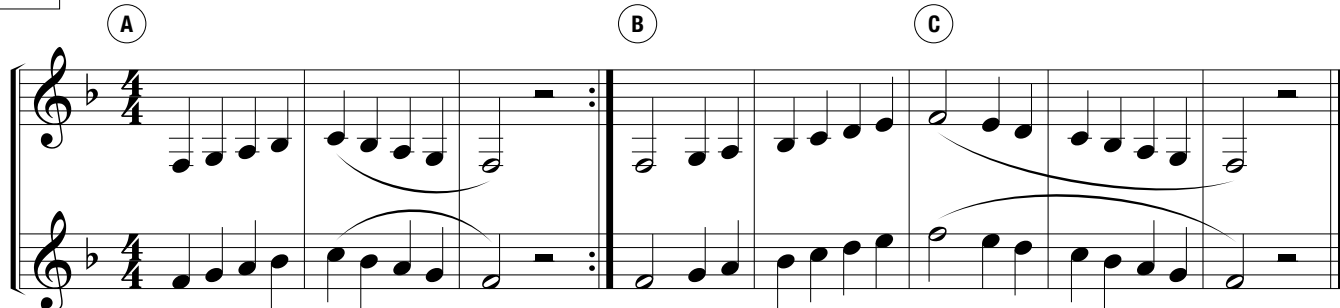
Musical notation for the F Concert Scale in 4/4 time. The scale is written on two staves. It consists of two parts: an ascending scale (A) and a descending scale (B). The key signature is two sharps (F# and C#). The notes are: F4, G4, A4, B4, C5, B4, A4, G4, F#4, E4, D4, C4 (ascending); C4, D4, E4, F#4, G4, A4, B4, C5, B4, A4, G4, F#4, E4, D4, C4 (descending). A circled 'A' is above the first measure, a circled 'B' is above the first measure of the descending scale, and a circled 'C' is above the first measure of the descending scale.

14 B \flat Concert Scale



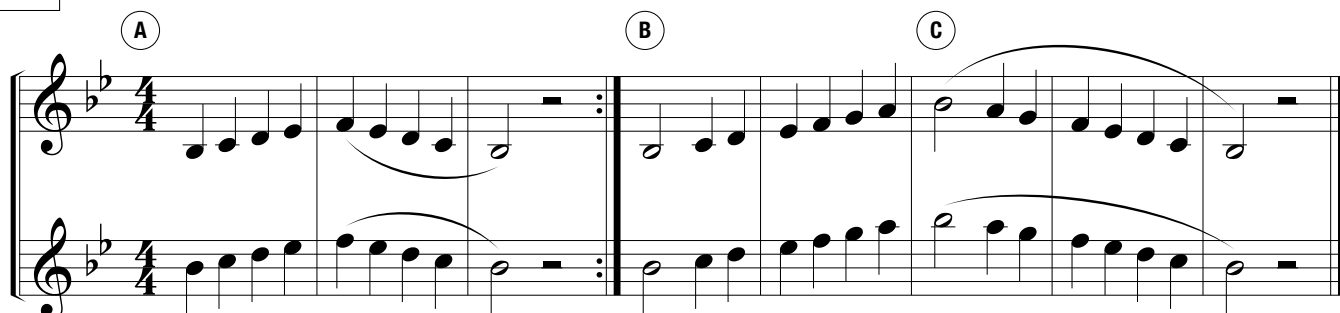
Musical notation for the B \flat Concert Scale in 4/4 time. The scale is written on two staves. It consists of two parts: an ascending scale (A) and a descending scale (B). The key signature is two flats (B \flat and E \flat). The notes are: B \flat 4, C5, D5, E \flat 5, F5, G5, A5, B \flat 5 (ascending); B \flat 5, A5, G5, F5, E \flat 5, D5, C5, B \flat 4 (descending). A circled 'A' is above the first measure, a circled 'B' is above the first measure of the descending scale, and a circled 'C' is above the first measure of the descending scale.

15 E \flat Concert Scale



Musical notation for the E \flat Concert Scale in 4/4 time. The scale is written on two staves. It consists of two parts: an ascending scale (A) and a descending scale (B). The key signature is three flats (B \flat , E \flat , and A \flat). The notes are: E \flat 4, F4, G4, A4, B \flat 4, A \flat 4, G4, F4, E \flat 4 (ascending); E \flat 4, D4, C4, B \flat 3, A \flat 3, G3, F4, E \flat 4 (descending). A circled 'A' is above the first measure, a circled 'B' is above the first measure of the descending scale, and a circled 'C' is above the first measure of the descending scale.

16 A \flat Concert Scale



Musical notation for the A \flat Concert Scale in 4/4 time. The scale is written on two staves. It consists of two parts: an ascending scale (A) and a descending scale (B). The key signature is three flats (B \flat , E \flat , and A \flat). The notes are: A \flat 4, B \flat 4, C5, D5, E \flat 5, F5, G5, A \flat 5 (ascending); A \flat 5, G5, F5, E \flat 5, D5, C5, B \flat 4, A \flat 4 (descending). A circled 'A' is above the first measure, a circled 'B' is above the first measure of the descending scale, and a circled 'C' is above the first measure of the descending scale.