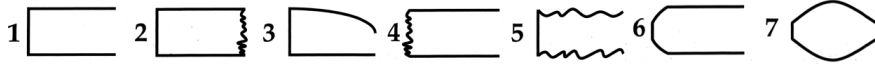


Build-Up For Success!

Concert Band Warm-ups

1 Concert F

- Keep the air steady and smooth. No waves or wiggles!
- Hold for full value, beat 4 goes to 1!
- Release together with an "AH" release
- Have a solid Beginning, Middle, and End or "BME" of each note (avoid sounds like #2-7 below).



Group 1	Group 2	Group 3	Group 4	Group 5
Brass: Tuba	Baritone	Trombone	Trumpet	All
WW: Low WW	Horn	Sax	Clarinet	Flute

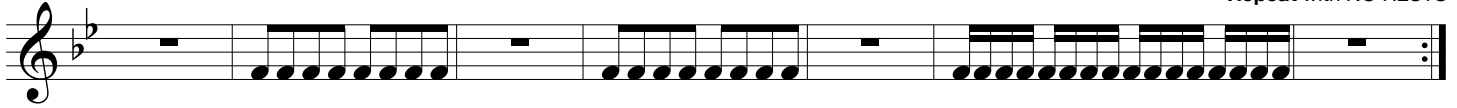


2 Articulation

- The tongue moves up and down to the same spot with the same strength each time.
- Match note lengths and tonguing style.
- Keep your jaw still!

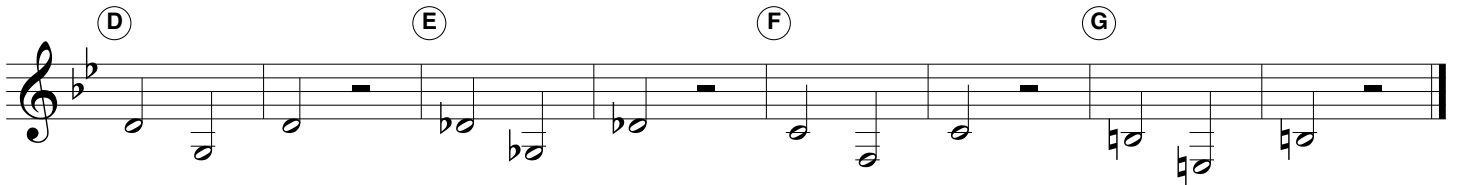
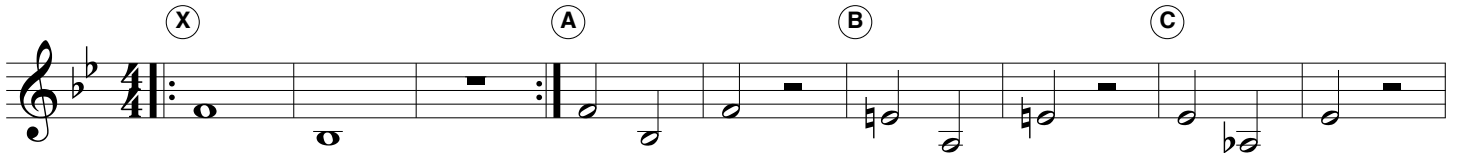


Repeat with NO RESTS

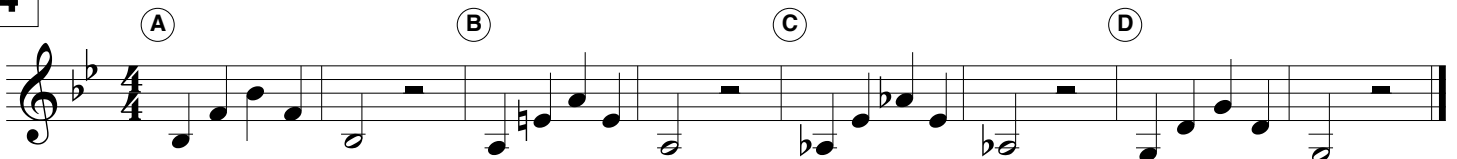


3 Lip Slurs

- Both notes should have equal energy and volume.
- Brass aim down for high and up for low.
- Listen for smooth transitions between the notes.
- Buzz, then play!



4



Build-Up For Success!

Bells pg. 3

Checks for Success - Tone

☑ IN TONE + IN TRIO = IN TUNE

- ☑ Breathe deep, to your seat, thinking "WOAH" or "OH". Feel cool air move over the tongue.
- ☑ Keep the air steady and smooth. No waves or wiggles in the sound.
- ☑ Perform each slur in **ONE BREATH!**
- ☑ Have a solid "BME" and give all notes equal energy and volume.
- ☑ Release together with an "AH" release!
- ☑ Practice the exercises at different volumes.

5 Long Tones

Opt. 1 Opt. 2 Opt. 3 Opt. 4

(A) (B) (C) (D)

(E) (F) (G) (H)

6 Remington

Opt. 1 Opt. 2 Opt. 3

(A)

(B)

(C)

(D)

Checks for Success - Articulation

- The tongue should move up & down.
- Match note lengths and style.
- The same part of the tongue hits the same spot with the same strength each time.
- Jaw should be still.

7 Articulation Study

Repeat with no rests

8 5-Note Scale Articulation Workout

9 Match the Model

- ▶ Pick one of the articulations above.
- ▶ A soloists plays each group first, then the ensemble repeats, matching the length and tone of the model.

Solo 1 All Solo 2 All Solo 3 All

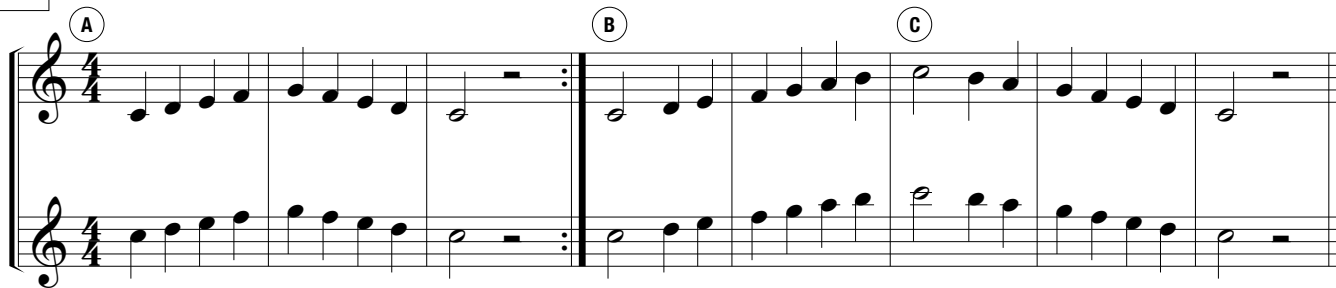
10 Expanding Intervals

11 16th-Note Tonguing Exercise

Mini Scales

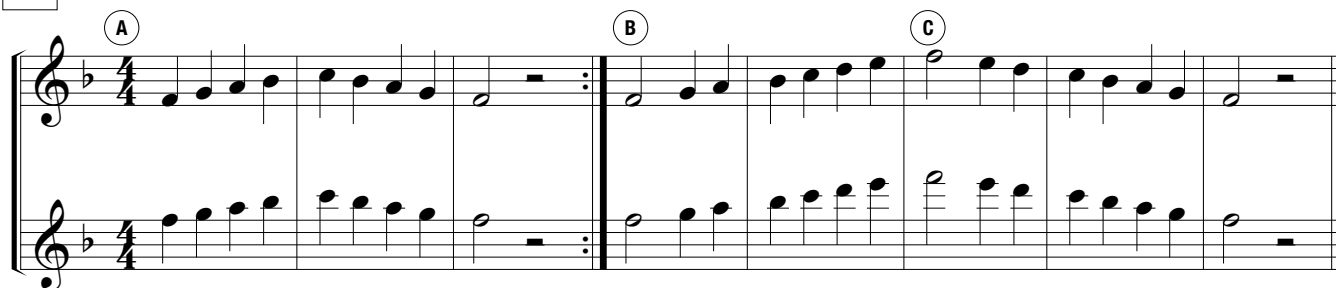
 Circle your key signature for each scale and mark any notes effected by it!

12 C Concert Scale



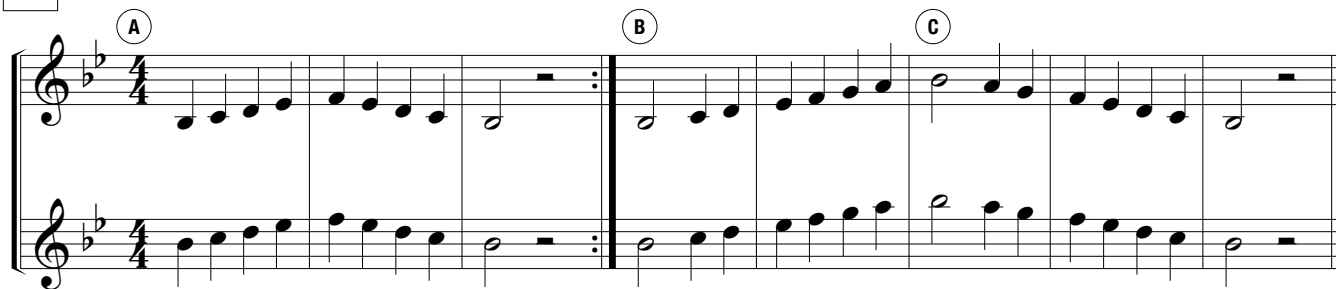
Musical notation for the C Concert Scale in 4/4 time. The scale is written in two staves (treble and bass clef). The first staff contains the notes C4, D4, E4, F4, G4, A4, B4, C5. The second staff contains the notes C3, B2, A2, G2, F2, E2, D2, C2. The scale is divided into three sections labeled A, B, and C. Section A is the first measure, B is the second measure, and C is the third measure. Each section is followed by a repeat sign.

13 F Concert Scale



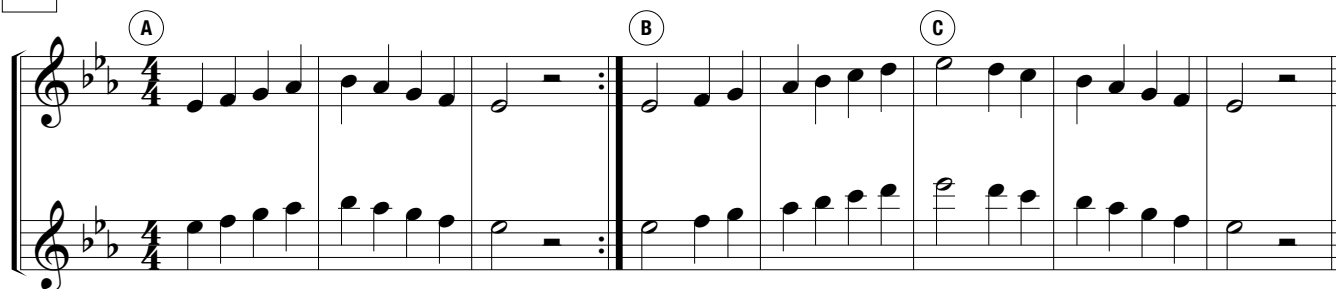
Musical notation for the F Concert Scale in 4/4 time. The scale is written in two staves (treble and bass clef). The first staff contains the notes F3, G3, A3, Bb3, C4, D4, E4, F4. The second staff contains the notes F2, E2, D2, C2, Bb1, A1, G1, F1. The scale is divided into three sections labeled A, B, and C. Section A is the first measure, B is the second measure, and C is the third measure. Each section is followed by a repeat sign.

14 Bb Concert Scale



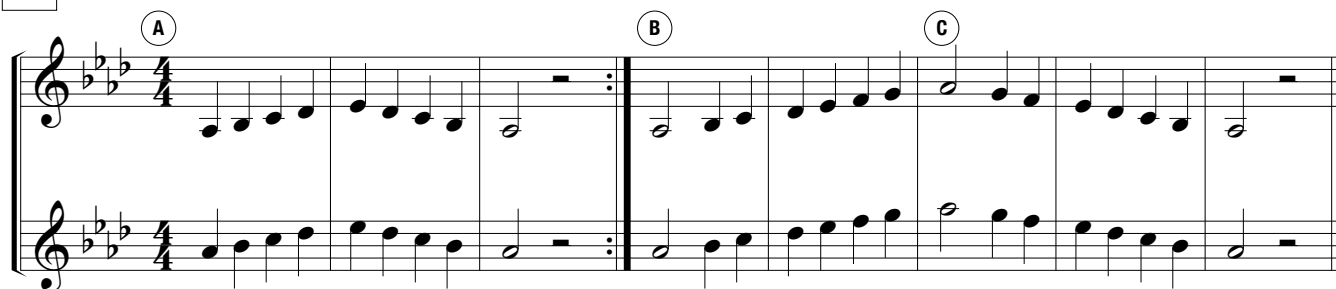
Musical notation for the Bb Concert Scale in 4/4 time. The scale is written in two staves (treble and bass clef). The first staff contains the notes Bb3, C4, D4, Eb4, F4, G4, Ab4, Bb4. The second staff contains the notes Bb2, Ab1, G1, F1, Eb1, D1, C1, Bb1. The scale is divided into three sections labeled A, B, and C. Section A is the first measure, B is the second measure, and C is the third measure. Each section is followed by a repeat sign.

15 Eb Concert Scale



Musical notation for the Eb Concert Scale in 4/4 time. The scale is written in two staves (treble and bass clef). The first staff contains the notes Eb3, F3, G3, Ab3, Bb3, C4, Db4, Eb4. The second staff contains the notes Eb2, Db1, C1, Bb1, Ab1, G1, F1, Eb1. The scale is divided into three sections labeled A, B, and C. Section A is the first measure, B is the second measure, and C is the third measure. Each section is followed by a repeat sign.

16 Ab Concert Scale



Musical notation for the Ab Concert Scale in 4/4 time. The scale is written in two staves (treble and bass clef). The first staff contains the notes Ab3, Bb3, C4, Db4, Eb4, F4, Gb4, Ab4. The second staff contains the notes Ab2, Gb1, F1, Eb1, Db1, C1, Bb1, Ab1. The scale is divided into three sections labeled A, B, and C. Section A is the first measure, B is the second measure, and C is the third measure. Each section is followed by a repeat sign.