

Build-Up For Success!

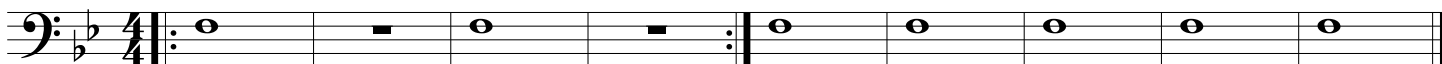
Concert Band Warm-ups

1 Concert F

- Keep the air steady and smooth. No waves or wiggles!
- Hold for full value, beat 4 goes to 1!
- Release together with an "AH" release
- Have a solid Beginning, Middle, and End or "BME" of each note (avoid sounds like #2-7 below).



Group 1	Group 2	Group 3	Group 4	Group 5
Brass: Tuba	Baritone	Trombone	Trumpet	All
WW: Low WW	Horn	Sax	Clarinet	Flute



2 Articulation

- The tongue moves up and down to the same spot with the same strength each time.
- Match note lengths and tonguing style.
- Keep your jaw still!



Repeat with NO RESTS

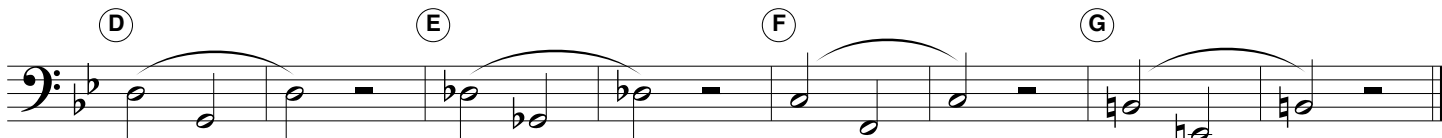


3 Lip Slurs

- Both notes should have equal energy and volume.
- Brass aim down for high and up for low.
- Listen for smooth transitions between the notes.
- Buzz, then play!

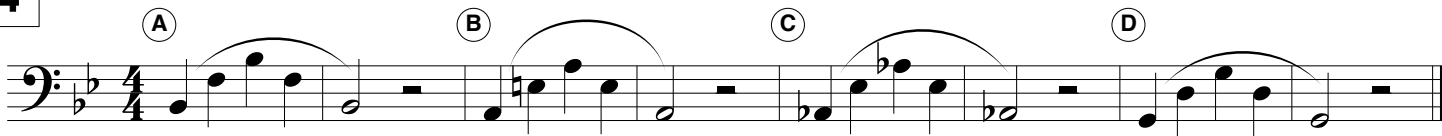


0 _____ 2 _____ 1 _____



12 _____ 23 _____ 4 _____ 24 _____

4



0 _____ 2 _____ 1 _____ 12 _____

Checks for Success - Tone

☑ IN TONE + IN TRIO = IN TUNE

- ☑ Breathe deep, to your seat, thinking "WOAH" or "OH". Feel cool air move over the tongue.
- ☑ Keep the air steady and smooth. No waves or wiggles in the sound.
- ☑ Perform each slur in **ONE BREATH!**
- ☑ Have a solid "BME" and give all notes equal energy and volume.
- ☑ Release together with an "AH" release!
- ☑ Practice the exercises at different volumes.

5 Long Tones

Opt. 1 Opt. 2 Opt. 3 Opt. 4

(A) (B) (C) (D)

(E) (F) (G) (H)

6 Remington

Opt. 1 Opt. 2 Opt. 3

(A)

(B)

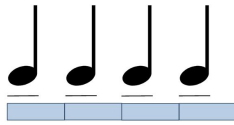
(C)

(D)

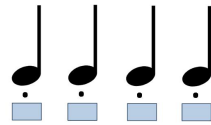
Checks for Success - Articulation

- The tongue should move up & down.
- Match note lengths and style.
- The same part of the tongue hits the same spot with the same strength each time.
- Jaw should be still.

Legato "Doo" or "Too"



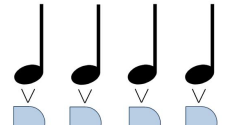
Staccato "Dit" or "Ti"



Marcato "Dah" or "Tah"



Martelato "Dat"



7 Articulation Study

8 5-Note Scale Articulation Workout


9 Match the Model

- ▶ Pick one of the articulations above.
- ▶ A soloist plays each group first, then the ensemble repeats, matching the length and tone of the model.

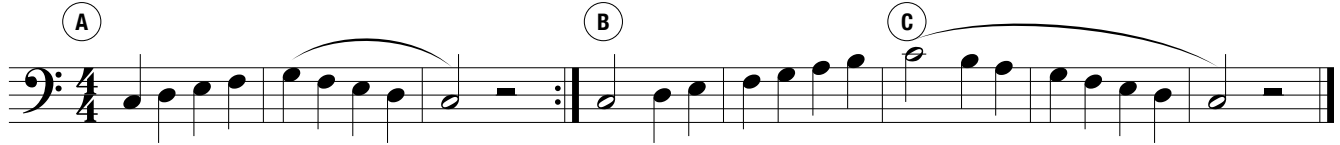
10 Expanding Intervals

11 16th-Note Tonguing Exercise

Mini Scales

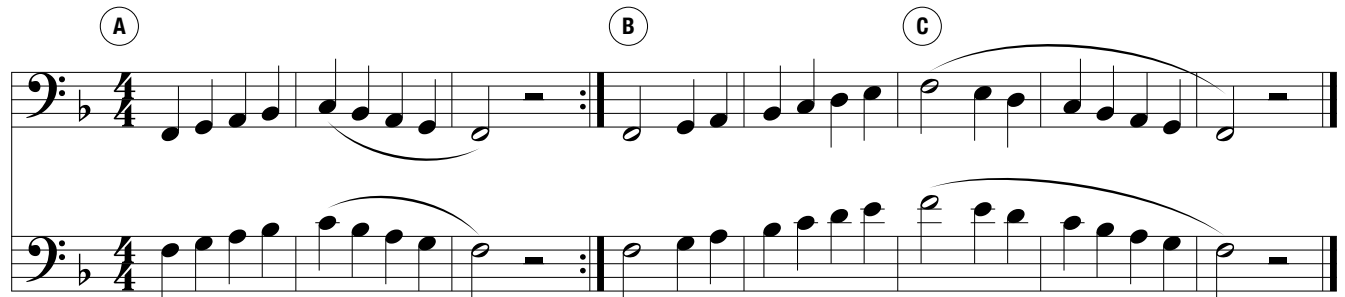
 Circle your key signature for each scale and mark any notes effected by it!

12 C Concert Scale



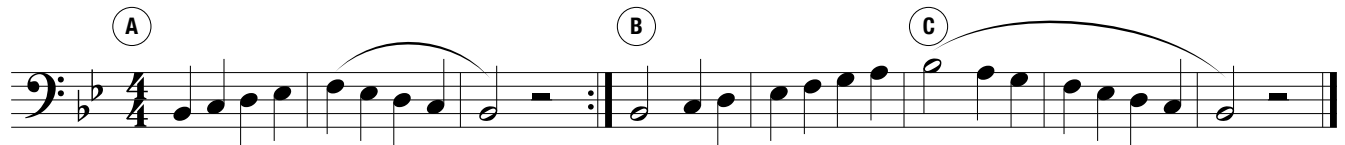
Musical notation for the C Concert Scale in 4/4 time. The scale is written on a single staff in bass clef. It consists of two measures: the first measure contains the first half of the scale (C4 to G4) and the second measure contains the second half (A4 to C5). The first measure is marked with a circled 'A' above the first note. The second measure is marked with a circled 'B' above the first note and a circled 'C' above the final note. Slurs are placed over the first half and second half of the scale.

13 F Concert Scale



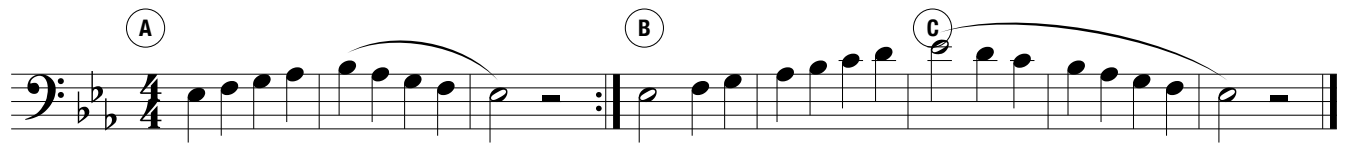
Musical notation for the F Concert Scale in 4/4 time. The scale is written on two staves in bass clef. The first staff contains the first half of the scale (F3 to C4) and the second staff contains the second half (D3 to F4). The first measure of the first staff is marked with a circled 'A' above the first note. The first measure of the second staff is marked with a circled 'B' above the first note. The final measure of the second staff is marked with a circled 'C' above the final note. Slurs are placed over the first half and second half of the scale.

14 Bb Concert Scale



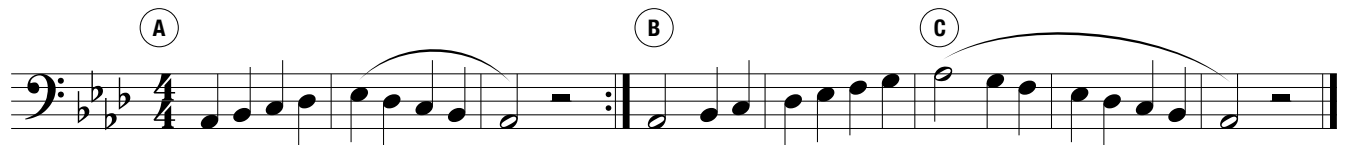
Musical notation for the Bb Concert Scale in 4/4 time. The scale is written on a single staff in bass clef. It consists of two measures: the first measure contains the first half of the scale (Bb3 to F4) and the second measure contains the second half (G4 to Bb4). The first measure is marked with a circled 'A' above the first note. The second measure is marked with a circled 'B' above the first note and a circled 'C' above the final note. Slurs are placed over the first half and second half of the scale.

15 Eb Concert Scale



Musical notation for the Eb Concert Scale in 4/4 time. The scale is written on a single staff in bass clef. It consists of two measures: the first measure contains the first half of the scale (Eb3 to Bb3) and the second measure contains the second half (Cb4 to Eb4). The first measure is marked with a circled 'A' above the first note. The second measure is marked with a circled 'B' above the first note and a circled 'C' above the final note. Slurs are placed over the first half and second half of the scale.

16 Ab Concert Scale



Musical notation for the Ab Concert Scale in 4/4 time. The scale is written on a single staff in bass clef. It consists of two measures: the first measure contains the first half of the scale (Ab3 to Eb3) and the second measure contains the second half (Cb4 to Ab4). The first measure is marked with a circled 'A' above the first note. The second measure is marked with a circled 'B' above the first note and a circled 'C' above the final note. Slurs are placed over the first half and second half of the scale.