



# Build-Up For Success!

## Concert Band Warm-ups

### 1 Concert F

- Keep the air steady and smooth. No waves or wiggles!
- Hold for full value, beat 4 goes to 1!
- Release together with an "AH" release
- Have a solid Beginning, Middle, and End or "BME" of each note (avoid sounds like #2-7 below).



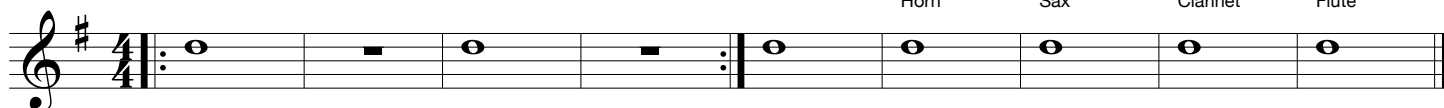
Group 1  
Brass: Tuba  
WW: Low WW

Group 2  
Baritone  
Horn

Group 3  
Trombone  
Sax

Group 4  
Trumpet  
Clarinet

Group 5  
All  
Flute

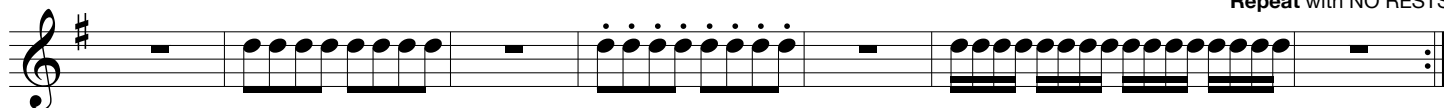


### 2 Articulation

- The tongue moves up and down to the same spot with the same strength each time.
- Match note lengths and tonguing style.
- Keep your jaw still!

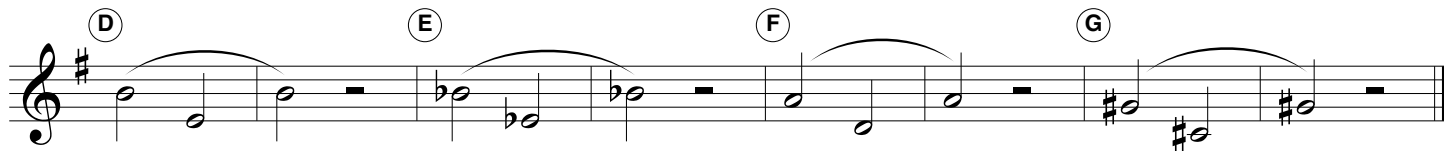


Repeat with NO RESTS

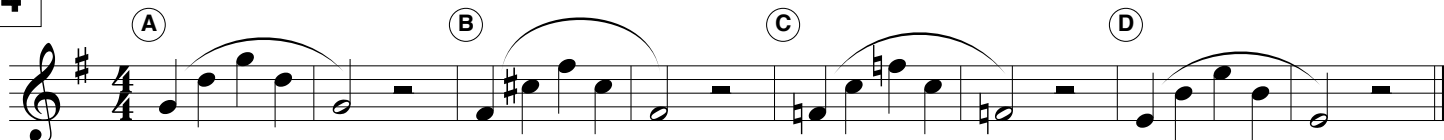


### 3 Lip Slurs

- Both notes should have equal energy and volume.
- Brass aim down for high and up for low.
- Listen for smooth transitions between the notes.
- Buzz, then play!



### 4



## Checks for Success - Tone

### ☑ IN TONE + IN TRIO = IN TUNE

- ☑ Breathe deep, to your seat, thinking "WOAH" or "OH". Feel cool air move over the tongue.
- ☑ Keep the air steady and smooth. No waves or wiggles in the sound.
- ☑ Perform each slur in **ONE BREATH!**
- ☑ Have a solid "BME" and give all notes equal energy and volume.
- ☑ Release together with an "AH" release!
- ☑ Practice the exercises at different volumes.

**5 Long Tones**

Opt. 1      Opt. 2      Opt. 3      Opt. 4

A      B      C      D

E      F      G      H

**6 Remington**

Opt. 1      Opt. 2      Opt. 3

A

B

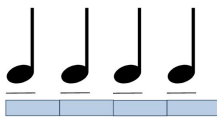
C

D

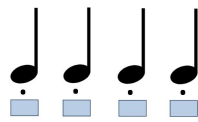
## Checks for Success - Articulation

- ☑ The tongue should move up & down.
- ☑ Match note lengths and style.
- ☑ The same part of the tongue hits the same spot with the same strength each time.
- ☑ Jaw should be still.

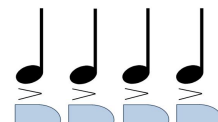
Legato "Doo" or "Too"



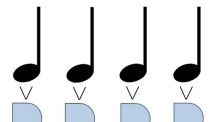
Staccato "Dit" or "Ti"



Marcato "Dah" or "Tah"



Martelato "Dat"



### 7 Articulation Study

### 8 5-Note Scale Articulation Workout


### 9 Match the Model

- ▶ Pick one of the articulations above.
- ▶ A soloist plays each group first, then the ensemble repeats, matching the length and tone of the model.

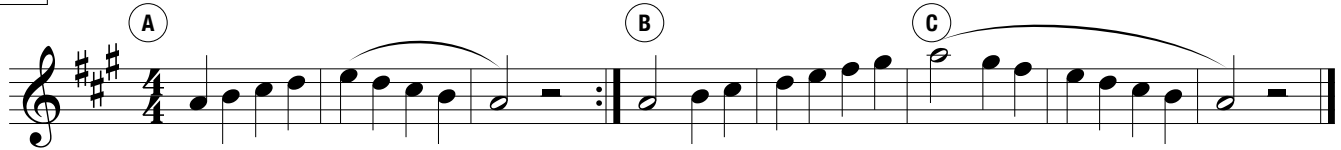
### 10 Expanding Intervals

### 11 16th-Note Tonguing Exercise

## Mini Scales

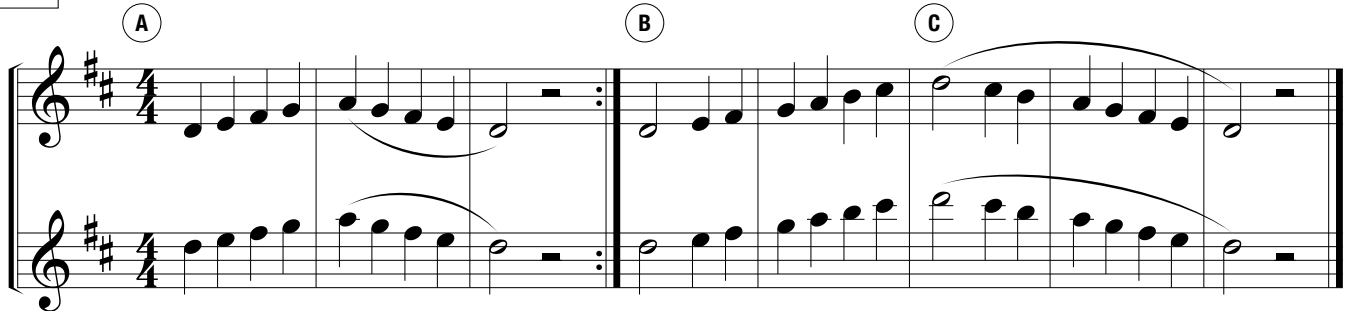
 Circle your key signature for each scale and mark any notes effected by it!

### 12 C Concert Scale



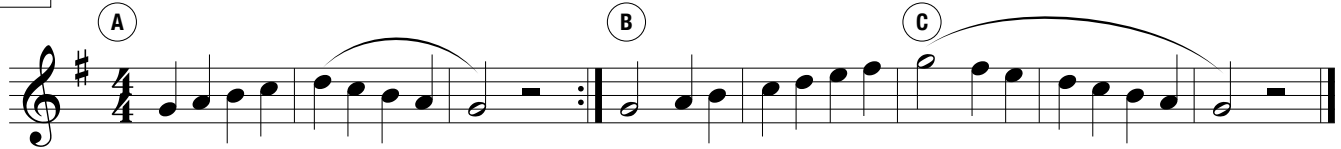
Musical notation for the C Concert Scale in 4/4 time. The scale is written on a single staff in treble clef with a key signature of two sharps (F# and C#). It is divided into three sections: (A) the first eight notes (C4 to G4), (B) the next eight notes (A4 to F#5), and (C) the final eight notes (G4 to C5). Each section is marked with a circled letter and includes a slur over the notes.

### 13 F Concert Scale



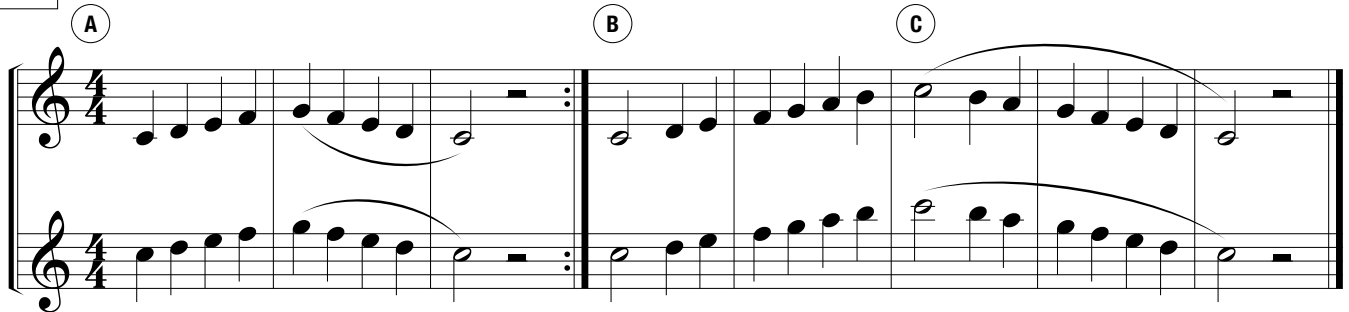
Musical notation for the F Concert Scale in 4/4 time. The scale is written on two staves in treble clef with a key signature of two sharps (F# and C#). It is divided into three sections: (A) the first eight notes (F4 to C5), (B) the next eight notes (D5 to A5), and (C) the final eight notes (B5 to F#6). Each section is marked with a circled letter and includes a slur over the notes.

### 14 Bb Concert Scale



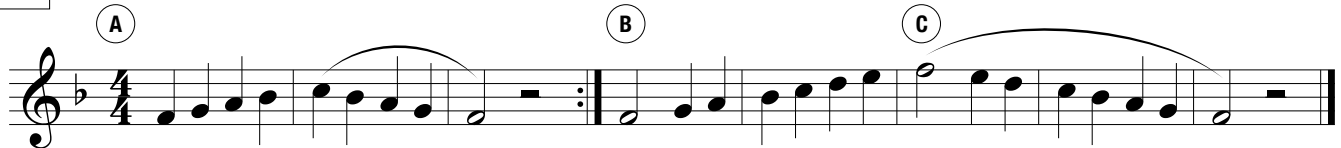
Musical notation for the Bb Concert Scale in 4/4 time. The scale is written on a single staff in treble clef with a key signature of one sharp (F#). It is divided into three sections: (A) the first eight notes (Bb4 to F#5), (B) the next eight notes (G5 to D6), and (C) the final eight notes (Eb6 to Bb6). Each section is marked with a circled letter and includes a slur over the notes.

### 15 Eb Concert Scale



Musical notation for the Eb Concert Scale in 4/4 time. The scale is written on two staves in treble clef with a key signature of one sharp (F#). It is divided into three sections: (A) the first eight notes (Eb4 to B5), (B) the next eight notes (C6 to G6), and (C) the final eight notes (Ab6 to Eb7). Each section is marked with a circled letter and includes a slur over the notes.

### 16 Ab Concert Scale



Musical notation for the Ab Concert Scale in 4/4 time. The scale is written on a single staff in treble clef with a key signature of one flat (Bb). It is divided into three sections: (A) the first eight notes (Ab4 to Eb5), (B) the next eight notes (F5 to Bb5), and (C) the final eight notes (Cb6 to Ab6). Each section is marked with a circled letter and includes a slur over the notes.