

Song Workbook for Tuba

Practice Strategy

Count It! ⇨ Ta It! ⇨ Note Name It! ⇨ Finger It! ⇨ Play It!

Trouble? Chunk It! (Play the trouble spot many times in a row)

1 HOT CROSS BUNS

English Folk Song

Musical notation for 'HOT CROSS BUNS' in bass clef, 4/4 time, B-flat major. The melody consists of quarter notes: G2, A2, Bb2, C3, D3, E3, F3, G3, A3, Bb3, C4, D4, E4, F4, G4, A4, Bb4, C5, D5, E5, F5, G5, A5, Bb5, C6.

2 MARY HAD A LITTLE LAMB

Traditional

Musical notation for 'MARY HAD A LITTLE LAMB' in bass clef, 4/4 time, B-flat major. The melody consists of quarter notes: G2, A2, Bb2, C3, D3, E3, F3, G3, A3, Bb3, C4, D4, E4, F4, G4, A4, Bb4, C5, D5, E5, F5, G5, A5, Bb5, C6.

3 AU CLAIRE DE LA LUNE

French Folk Song

Musical notation for 'AU CLAIRE DE LA LUNE' in bass clef, 4/4 time, B-flat major. The melody consists of quarter notes: G2, A2, Bb2, C3, D3, E3, F3, G3, A3, Bb3, C4, D4, E4, F4, G4, A4, Bb4, C5, D5, E5, F5, G5, A5, Bb5, C6.

4 DOWN BY THE STATION

Traditional

Musical notation for 'DOWN BY THE STATION' in bass clef, 4/4 time, B-flat major. The melody consists of quarter notes: G2, A2, Bb2, C3, D3, E3, F3, G3, A3, Bb3, C4, D4, E4, F4, G4, A4, Bb4, C5, D5, E5, F5, G5, A5, Bb5, C6.

5 WE WILL ROCK YOU

Queen

Musical notation for 'WE WILL ROCK YOU' in bass clef, 4/4 time, B-flat major. The melody consists of quarter notes: G2, A2, Bb2, C3, D3, E3, F3, G3, A3, Bb3, C4, D4, E4, F4, G4, A4, Bb4, C5, D5, E5, F5, G5, A5, Bb5, C6.

6 ODE TO JOY (from Symphony No. 9)

Ludwig van Beethoven (1770-1827)

Musical notation for 'ODE TO JOY (from Symphony No. 9)' in bass clef, 4/4 time, B-flat major. The melody consists of quarter notes: G2, A2, Bb2, C3, D3, E3, F3, G3, A3, Bb3, C4, D4, E4, F4, G4, A4, Bb4, C5, D5, E5, F5, G5, A5, Bb5, C6.

7 GO TELL AUNT RHODY

American Folk Song

Musical notation for 'GO TELL AUNT RHODY' in bass clef, 4/4 time, B-flat major. The melody consists of quarter notes: G2, A2, Bb2, C3, D3, E3, F3, G3, A3, Bb3, C4, D4, E4, F4, G4, A4, Bb4, C5, D5, E5, F5, G5, A5, Bb5, C6.

8

A LA RUEDA

Spanish Folk Song

Solo/Soli

Tutti

Solo/Soli

Tutti

Musical notation for 'A LA RUEDA' in bass clef, 4/4 time, key of B-flat. The piece consists of a single melodic line with a steady eighth-note rhythm. It begins with a double bar line and ends with a repeat sign.

9

SWEETLY SINGS THE DONKEY

American Folk Song

Musical notation for 'SWEETLY SINGS THE DONKEY' in bass clef, 4/4 time, key of B-flat. The piece consists of two staves. The first staff has a melodic line with eighth notes and a circled '1' above the first measure. The second staff continues the melody with a circled '2' above the first measure and a circled '3' above the first measure of the second line. The piece ends with a repeat sign.

10

LIGHTLY ROW

Traditional

Musical notation for 'LIGHTLY ROW' in bass clef, 4/4 time, key of B-flat. The piece is arranged for two parts, A and B. Part A is a melodic line with eighth notes. Part B is a bass line with eighth notes. The notation is presented in two systems, each with a grand staff (A and B staves) and a repeat sign at the end.

11

CELEBRATION

Kool & the Gang (1980)

Musical notation for 'CELEBRATION' in bass clef, 4/4 time, key of B-flat. The piece starts with a double bar line and a whole rest, followed by a melodic line with eighth notes and some rests. It ends with a repeat sign.

12

BLUES IN F

Musical notation for 'BLUES IN F' in bass clef, 4/4 time, key of B-flat. The piece consists of two staves of musical notation, both featuring a steady eighth-note melodic line. The piece ends with a repeat sign.

Pick any note to play!
Make sure to play it with a good tone!

13 SHARK ATTACK!

14 TWINKLE, TWINKLE

Wolfgang Amadeus Mozart (1756-1791)

15 ALOUETTE

French-Canadian Folk Song

16 SHOO FLY!

American Folk Song

17 RUSSIAN FOLK SONG (Duet)

Ludwig van Beethoven (1770-1827)

18 LONDON BRIDGE ▶ Change the AMOUNT of air you use. Always keep your AIR SPEED FAST!

English Folk Song

19 POLLY WOLLY DOODLE ▶ Are you GRADUALLY stepping up in volume every two measures?

American Folk Song

20

HOT CROSS ACCIDENTAL!

Musical notation for 'HOT CROSS ACCIDENTAL!' in bass clef, 4/4 time, key of B-flat major. The piece consists of a single line of music with several measures of rests and eighth-note patterns.

The "Rule of the Accidental" applies!

21

MARY HAD A KEY SIGNATURE!

★ Always check the key signature before you begin a piece! Then, look for any notes effected by it. You may want to mark these!

Musical notation for 'MARY HAD A KEY SIGNATURE!' in bass clef, 4/4 time, key of B-flat major. The piece features a continuous eighth-note melody.

22

YANKEE DOODLE

★ Don't forget to check your key signature first and mark any notes that may be effected by it!

Traditional

Musical notation for 'YANKEE DOODLE' in bass clef, 4/4 time, key of B-flat major. The piece consists of a single line of music with eighth-note patterns.

23

EIGHT DAYS A WEEK

John Lennon and Paul McCartney of The Beatles

Brightly
5

Musical notation for 'EIGHT DAYS A WEEK' in bass clef, 4/4 time, key of B-flat major. The piece starts with a whole rest followed by eighth-note patterns.

Fine

Musical notation for 'EIGHT DAYS A WEEK' in bass clef, 4/4 time, key of B-flat major. The piece continues with eighth-note patterns.

D.C. al Fine

Musical notation for 'EIGHT DAYS A WEEK' in bass clef, 4/4 time, key of B-flat major. The piece concludes with eighth-note patterns.

24

SKIP TO MY LOU

American Folk Song

Solo 1

All

Solo 2

All

Musical notation for 'SKIP TO MY LOU' in bass clef, 4/4 time, key of B-flat major. The piece is divided into sections: Solo 1, All, Solo 2, and All.

25

FRERE JACQUES

French Folk Song

①

②

③

④

Musical notation for 'FRERE JACQUES' in bass clef, 4/4 time, key of B-flat major. The piece is divided into four measures, each marked with a circled number (1-4).

mf

f

26

THIS OLD MAN

Traditional

Musical notation for 'THIS OLD MAN' in bass clef, 4/4 time, key of B-flat major. The piece starts with a piano (*p*) dynamic and ends with a forte (*f*) dynamic. The melody consists of eighth and quarter notes.

27

HARD ROCK BLUES

Allegro

Musical notation for 'HARD ROCK BLUES' in bass clef, 4/4 time, key of B-flat major. The tempo is marked 'Allegro'. The piece features a driving eighth-note bass line with occasional rests.

28

ROCK & ROLL PART 2 (THE "HEY" SONG)

Heavy Rock Shuffle

Mike Leander and Gary Glitter

Musical notation for 'ROCK & ROLL PART 2 (THE "HEY" SONG)' in bass clef, 4/4 time, key of B-flat major. The tempo is 'Heavy Rock Shuffle'. The piece features a shuffle-style bass line with a double bar line and repeat sign.

29

TROMBONE RAG

Allegro

Musical notation for 'TROMBONE RAG' in bass clef, 4/4 time, key of B-flat major. The tempo is 'Allegro'. The piece features a rhythmic bass line with first and second endings marked '1.' and '2.'.

30

BLUES ADVENTURE

Allegro

Musical notation for 'BLUES ADVENTURE' in bass clef, 4/4 time, key of B-flat major. The tempo is 'Allegro'. The piece starts with a forte (*f*) dynamic and ends with a *rit.* (ritardando) marking. The melody features eighth-note patterns and slurs.

31 LEAN ON IT

An accent > indicates to play the marked note louder.

Musical notation for 'Lean on It' in bass clef, 4/4 time, B-flat major. The piece consists of a single line of music with a steady eighth-note rhythm. Accents (>) are placed above the first note of every second measure.

32 FALLING STAR

Musical notation for 'Falling Star' in bass clef, 4/4 time, B-flat major. The piece consists of two lines of music. The first line features a steady eighth-note rhythm, while the second line features a steady quarter-note rhythm.

33 MORNING MOOD (from Peer Gynt)

Edvard Grieg (1843-1907)

Musical notation for 'Morning Mood' in bass clef, 3/4 time, B-flat major. The piece consists of a single line of music with a steady eighth-note rhythm. Dynamics include *p* (piano), *mf* (mezzo-forte), and *pp* (pianissimo).

34 THEME (from the Nutcracker Ballet)

Pyotr Ilyich Tchaikovsky (1840-1893)

Musical notation for 'Theme from the Nutcracker Ballet' in bass clef, 4/4 time, B-flat major. The piece consists of a single line of music with a steady eighth-note rhythm. Dynamics include *mp* (mezzo-piano) and *mf* (mezzo-forte).

35 WILLIAM TELL OVERTURE

Gioachino Rossini (1792-1868)

Musical notation for 'William Tell Overture' in bass clef, 4/4 time, B-flat major. The piece consists of two lines of music. The first line features a steady eighth-note rhythm, while the second line features a steady quarter-note rhythm. Dynamics include *mf* (mezzo-forte) and *f* (forte).

36 HAPPY BIRTHDAY TO YOU

Musical notation for 'Happy Birthday to You' in bass clef, 3/4 time, B-flat major. The piece consists of a single line of music with a steady eighth-note rhythm.

37 JOE AVERY'S BLUES (SECOND LINE)

Willie Norman "Bill" Sinegal (1928-2014)

Swing! $\text{♪♪} = \text{♪}^3\text{♪}$

Two staves of musical notation in bass clef, 4/4 time, key of B-flat major. The first staff contains the first line of the piece, and the second staff contains the second line. The music features a steady eighth-note bass line with occasional triplet eighth notes.

38 WHEN THE SAINTS GO MARCHING IN

Allegro

Two staves of musical notation in bass clef, 4/4 time, key of B-flat major. The first staff contains the first line, and the second staff contains the second line. The music is characterized by a steady eighth-note bass line with occasional quarter notes and rests.

39 STAR WARS (Main Theme)

John Williams

One staff of musical notation in bass clef, 4/4 time, key of B-flat major. The music features a steady eighth-note bass line with occasional triplet eighth notes.

40 MINUET IN G (from the Anna Magdalena Notebook)

Johann Sebastian Bach (1685-1750)

Moderato

Two staves of musical notation in bass clef, 3/4 time, key of G major. The first staff contains the first line, and the second staff contains the second line. The music features a steady eighth-note bass line with occasional quarter notes and rests.

41 LULLABY

Johannes Brahms (1833-1897)

One staff of musical notation in bass clef, 3/4 time, key of B-flat major. The music features a steady eighth-note bass line with occasional quarter notes and rests.

p

42 THEME (from "Orpheus in the Underworld")

Jacques Offenbach (1819-1880)

Allegro

One staff of musical notation in bass clef, 2/4 time, key of B-flat major. The music features a steady eighth-note bass line with occasional quarter notes and rests.

43 **THEME (from Symphony No. 9 "New World Symphony")**
Largo

Antonin Dvorak (1841-1904)

p *mp* *p*

44 **TRUMPET VOLUNTARY**
Maestoso

Jeremiah Clarke (1674-1707)

mf

45 **KUM BA YAH**
Largo

African Folk Song

mf

46 **AMERICA**

mf *f*

47 **AMAZING GRACE**

mp *f* *mp* *p*

48 **THEME (from Swan Lake)**
Mournfully

Pyotr Ilyich Tchaikovsky (1840-1893)

mp *mf*

1. 2.

49

MARINE'S HYMN

Allegro

Fine

Musical score for 'MARINE'S HYMN' in bass clef, 2/4 time, key of B-flat major. The piece starts with a forte (*f*) dynamic. The melody is simple and rhythmic. The score concludes with a double bar line and the instruction 'D.C. al Fine'.

50

THE YANKEE DOODLE BOY

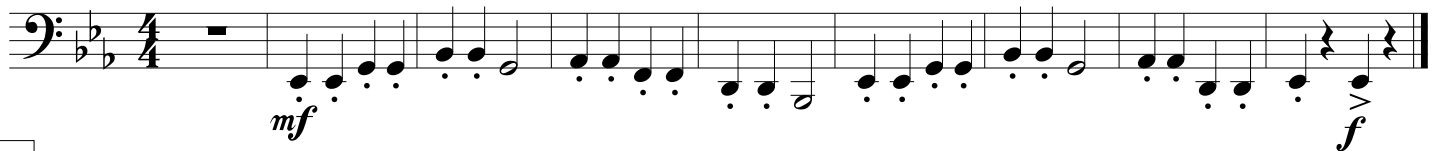
Allegro

Musical score for 'THE YANKEE DOODLE BOY' in bass clef, 2/4 time, key of B-flat major. The score includes two first endings. The first ending leads to a repeat of the first few measures, while the second ending concludes the piece with a double bar line.

51

THEME (from Symphony No. 94 "The Surprise Symphony")

Franz Joseph Haydn (1732-1809)



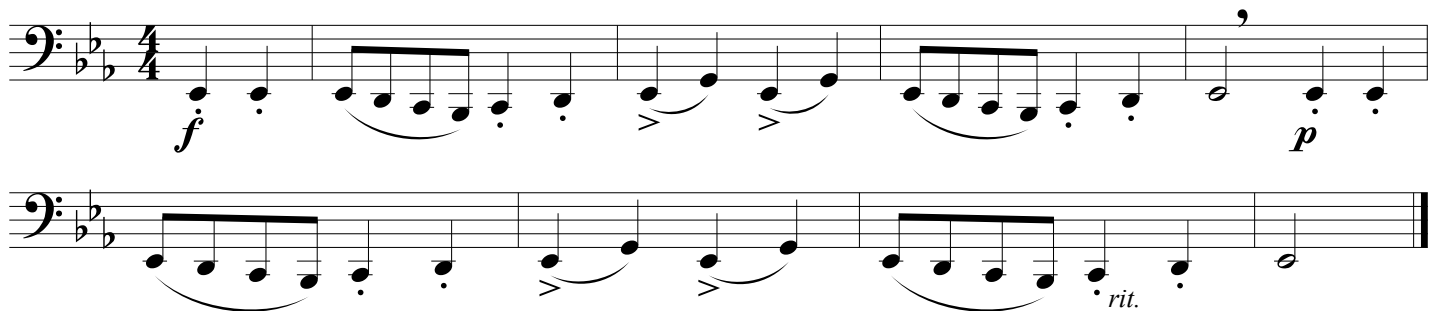
Musical score for the 'THEME' from Symphony No. 94 in bass clef, 4/4 time, key of B-flat major. The piece begins with a mezzo-forte (*mf*) dynamic and ends with a forte (*f*) dynamic. The melody is characterized by a steady eighth-note accompaniment.

52

CLASSICAL DANCE

Allegro

Wolfgang Amadeus Mozart (1756-1791)



Musical score for 'CLASSICAL DANCE' in bass clef, 4/4 time, key of B-flat major. The piece starts with a forte (*f*) dynamic and ends with a piano (*p*) dynamic. It features a rhythmic melody with slurs and accents, and concludes with a *rit.* (ritardando) marking.

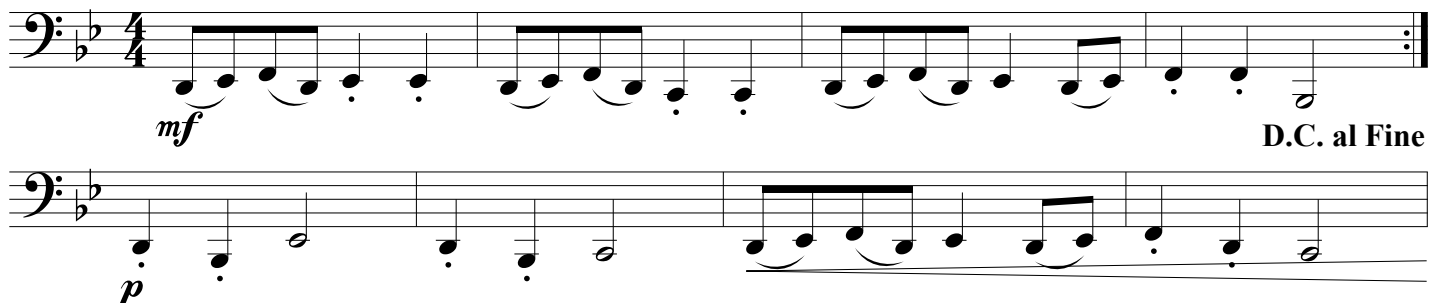
53

SHEPHERD'S HEY

Moderato

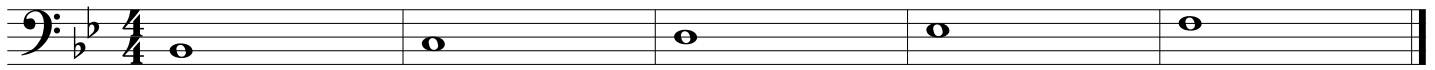
English Folk Song

Fine



Musical score for 'SHEPHERD'S HEY' in bass clef, 4/4 time, key of B-flat major. The piece begins with a mezzo-forte (*mf*) dynamic and ends with a piano (*p*) dynamic. The melody is simple and rhythmic, concluding with a double bar line and the instruction 'D.C. al Fine'.

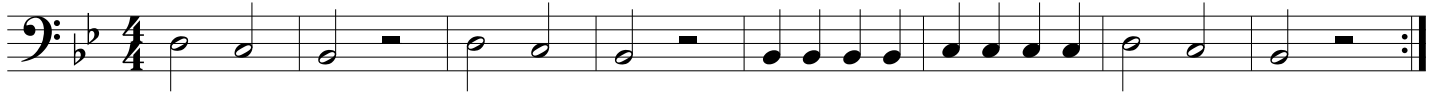
54



55

HOT CROSS BUNS

English Folk Song



56

MARY HAD A LITTLE LAMB

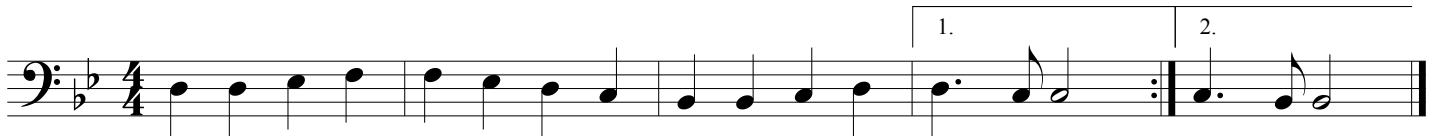
Traditional



57

ODE TO JOY (from Symphony No. 9)

Ludwig van Beethoven (1770-1827)



58

FIGHT SONG

Rachel Platten, Dave Bassett, Jon Levine



59

FIREWORK

Katy Perry, Mikkel S. Ericksen, Tor Erik Hermansen, Sandy Wilhelm, Ester Dean

