

Song Workbook for Trumpet in B \flat

Practice Strategy

Count It! ⇨ Ta It! ⇨ Note Name It! ⇨ Finger It! ⇨ Play It!

Trouble? Chunk It! (Play the trouble spot many times in a row)

1 HOT CROSS BUNS

English Folk Song



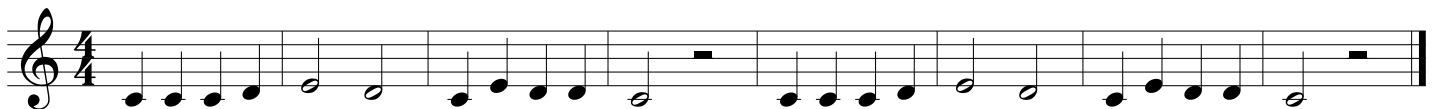
2 MARY HAD A LITTLE LAMB

Traditional



3 AU CLAIRE DE LA LUNE

French Folk Song



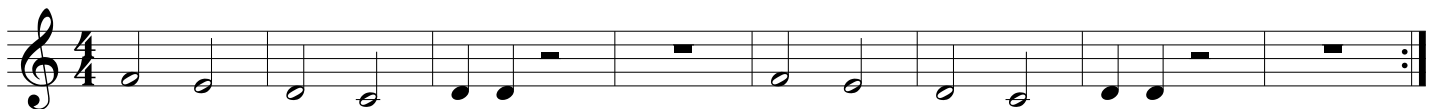
4 DOWN BY THE STATION

Traditional



5 WE WILL ROCK YOU

Queen



6 ODE TO JOY (from Symphony No. 9)

Ludwig van Beethoven (1770-1827)



7 GO TELL AUNT RHODY

American Folk Song



8

A LA RUEDA

Spanish Folk Song

Solo/Soli

Tutti

Solo/Soli

Tutti

Musical notation for 'A LA RUEDA' in 4/4 time. The melody consists of a sequence of eighth and quarter notes, ending with a double bar line and repeat dots.

9

SWEETLY SINGS THE DONKEY

American Folk Song

Musical notation for 'SWEETLY SINGS THE DONKEY' in 4/4 time. The melody is divided into three measures by circled numbers 1, 2, and 3. Measure 1 contains a sequence of eighth notes. Measure 2 contains a sequence of eighth notes. Measure 3 contains a sequence of eighth notes with some rests, ending with a double bar line and repeat dots.

10

LIGHTLY ROW

Traditional

Musical notation for 'LIGHTLY ROW' in 4/4 time, presented as a duet for parts A and B. Part A starts with a sequence of eighth notes, while Part B starts with a sequence of quarter notes. Both parts end with a double bar line and repeat dots.

11

CELEBRATION

Kool & the Gang (1980)

Musical notation for 'CELEBRATION' in 4/4 time. The melody begins with a whole rest, followed by a sequence of eighth notes and quarter notes, ending with a double bar line and repeat dots.

12

BLUES IN F

Musical notation for 'BLUES IN F' in 4/4 time. The melody consists of a sequence of eighth and quarter notes, ending with a double bar line and repeat dots.

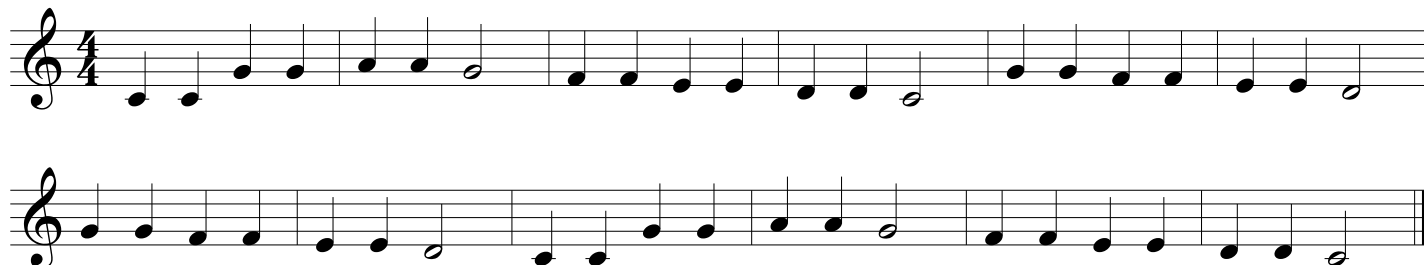
Pick any note to play!
Make sure to play it with a good tone!

13 SHARK ATTACK!



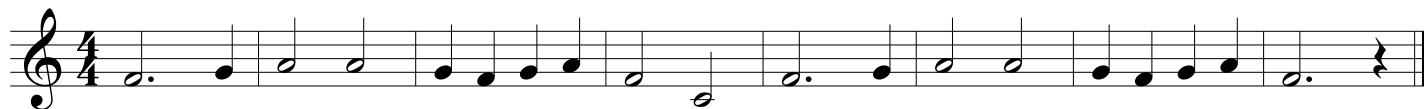
14 TWINKLE, TWINKLE

Wolfgang Amadeus Mozart (1756-1791)



15 ALOUETTE

French-Canadian Folk Song



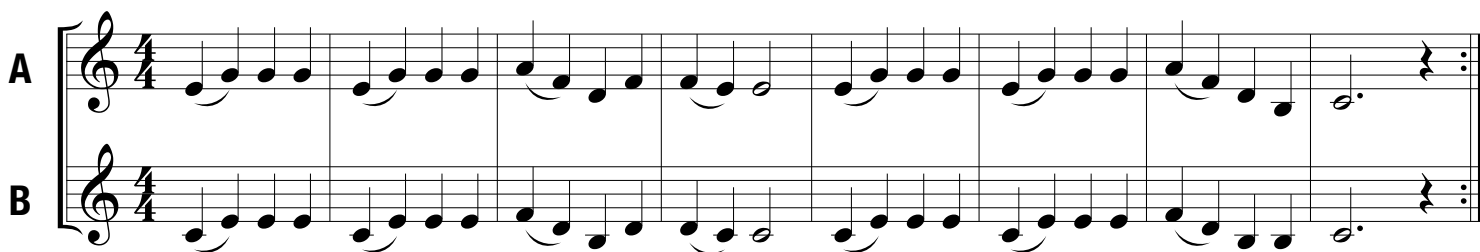
16 SHOO FLY!

American Folk Song



17 RUSSIAN FOLK SONG (Duet)

Ludwig van Beethoven (1770-1827)



18 LONDON BRIDGE ▶ Change the AMOUNT of air you use. Always keep your AIR SPEED FAST!

English Folk Song



19 POLLY WOLLY DOODLE ▶ Are you GRADUALLY stepping up in volume every two measures?

American Folk Song



20 HOT CROSS ACCIDENTAL!

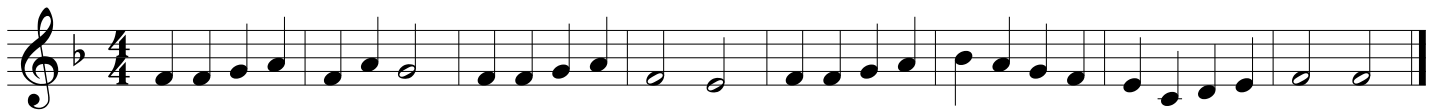


The "Rule of the Accidental" applies!

21 MARY HAD A KEY SIGNATURE! ★ Always check the key signature before you begin a piece! Then, look for any notes effected by it. You may want to mark these!



22 YANKEE DOODLE ★ Don't forget to check your key signature first and mark any notes that may be effected by it! **Traditional**



23 EIGHT DAYS A WEEK **John Lennon and Paul McCartney of The Beatles**

Brightly



Fine



D.C. al Fine



24 SKIP TO MY LOU **American Folk Song**

Solo 1

All

Solo 2

All



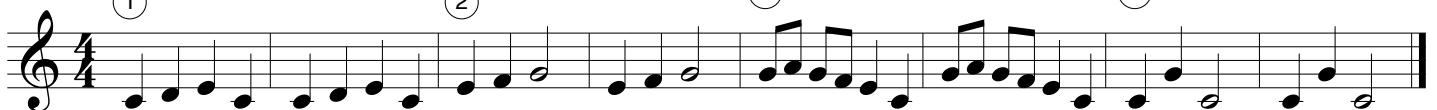
25 FRERE JACQUES **French Folk Song**

①

②

③

④



mf

f

26

THIS OLD MAN

Traditional

Musical notation for 'THIS OLD MAN' in 4/4 time. The melody starts with a piano (*p*) dynamic and gradually increases to a forte (*f*) dynamic. The piece concludes with a double bar line.

27

HARD ROCK BLUES

Allegro

Musical notation for 'HARD ROCK BLUES' in 4/4 time. The piece is marked 'Allegro'. It features a driving melody with frequent rests and accents. The notation includes a double bar line with repeat dots at the end.

28

ROCK & ROLL PART 2 (THE "HEY" SONG)

Heavy Rock Shuffle

Mike Leander and Gary Glitter

Musical notation for 'ROCK & ROLL PART 2 (THE "HEY" SONG)' in 4/4 time. The piece is marked 'Heavy Rock Shuffle'. It features a rhythmic melody with a key signature change to one sharp (F#) in the final measure. The notation includes a double bar line with repeat dots.

29

TROMBONE RAG

Allegro

Musical notation for 'TROMBONE RAG' in 4/4 time. The piece is marked 'Allegro'. It features a melody with slurs and a first/second ending structure. The notation includes a double bar line with repeat dots.

30

BLUES ADVENTURE

Allegro

Musical notation for 'BLUES ADVENTURE' in 4/4 time. The piece is marked 'Allegro'. It features a blues-influenced melody with a forte (*f*) dynamic and a 'rit.' (ritardando) marking at the end. The notation includes a double bar line.

31 LEAN ON IT

An accent > indicates to play the marked note louder.

Musical notation for 'Lean on It' in 4/4 time. The melody consists of a sequence of eighth notes: C4, D4, E4, F4, G4, A4, B4, C5, B4, A4, G4, F4, E4, D4, C4. The notes are grouped in pairs of four. Accents (>) are placed above the first note of each pair: C4, D4, G4, A4, and C4.

32 FALLING STAR

Musical notation for 'Falling Star' in 4/4 time. The melody consists of a sequence of eighth notes: C4, D4, E4, F4, G4, A4, B4, C5, B4, A4, G4, F4, E4, D4, C4. The notes are grouped in pairs of four. The key signature has one sharp (F#).

33 MORNING MOOD (from Peer Gynt)

Edvard Grieg (1843-1907)

Musical notation for 'Morning Mood' in 3/4 time. The melody consists of a sequence of eighth notes: C4, D4, E4, F4, G4, A4, B4, C5, B4, A4, G4, F4, E4, D4, C4. The notes are grouped in pairs of three. Dynamic markings are *p* at the beginning, *mf* in the middle, and *p* at the end.

34 THEME (from the Nutcracker Ballet)

Pyotr Ilyich Tchaikovsky (1840-1893)

Musical notation for 'Theme' in 4/4 time. The melody consists of a sequence of eighth notes: C4, D4, E4, F4, G4, A4, B4, C5, B4, A4, G4, F4, E4, D4, C4. The notes are grouped in pairs of four. Dynamic markings are *mp* at the beginning and *mf* in the middle.

35 WILLIAM TELL OVERTURE

Gioachino Rossini (1792-1868)

Musical notation for 'William Tell Overture' in 4/4 time. The melody consists of a sequence of eighth notes: C4, D4, E4, F4, G4, A4, B4, C5, B4, A4, G4, F4, E4, D4, C4. The notes are grouped in pairs of four. Dynamic markings are *mf* at the beginning and *f* at the end.

36 HAPPY BIRTHDAY TO YOU

Musical notation for 'Happy Birthday to You' in 3/4 time. The melody consists of a sequence of eighth notes: C4, D4, E4, F4, G4, A4, B4, C5, B4, A4, G4, F4, E4, D4, C4. The notes are grouped in pairs of three. Dynamic markings are *f* at the beginning and *f* at the end.

37 JOE AVERY'S BLUES (SECOND LINE)

Willie Norman "Bill" Sinegal (1928-2014)

Swing! ♩ = ♩³

Musical notation for Joe Avery's Blues (Second Line). It consists of two staves of music in 4/4 time. The first staff begins with a treble clef and a key signature of one flat (Bb). The tempo is marked 'Swing!' with a note equal to a triplet note. The melody features a series of eighth and quarter notes with some rests, characteristic of a blues second line.

38 WHEN THE SAINTS GO MARCHING IN

Allegro

Musical notation for When the Saints Go Marching In. It consists of two staves of music in 4/4 time. The first staff begins with a treble clef and a key signature of one flat (Bb). The tempo is marked 'Allegro'. The melody is a well-known hymn tune, starting with a quarter rest followed by a series of quarter and eighth notes. The second staff includes first and second endings.

39 STAR WARS (Main Theme)

John Williams

Musical notation for Star Wars (Main Theme). It consists of one staff of music in 4/4 time. The key signature is one flat (Bb). The tempo is not explicitly marked but is typically 'Moderato'. The melody features a series of quarter and eighth notes, with triplets indicated by a '3' above the notes.

40 MINUET IN G (from the Anna Magdalena Notebook)

Johann Sebastian Bach (1685-1750)

Moderato

Musical notation for Minuet in G. It consists of two staves of music in 3/4 time. The key signature is one flat (Bb). The tempo is marked 'Moderato'. The melody is a simple, elegant piece, starting with a quarter note followed by eighth and quarter notes. The second staff includes first and second endings.

41 LULLABY

Johannes Brahms (1833-1897)

Musical notation for Lullaby. It consists of one staff of music in 3/4 time. The key signature is one flat (Bb). The tempo is not explicitly marked but is typically 'Adagio'. The melody is a gentle, lullaby-like piece, starting with a quarter rest followed by quarter and eighth notes. A piano (*p*) dynamic marking is present below the first few notes.

42 THEME (from "Orpheus in the Underworld")

Jacques Offenbach (1819-1880)

Allegro

Musical notation for Theme (from "Orpheus in the Underworld"). It consists of one staff of music in 2/4 time. The key signature is one flat (Bb). The tempo is marked 'Allegro'. The melody is a lively, dance-like piece, starting with a quarter note followed by eighth and quarter notes. The second staff includes first and second endings.

43 **THEME (from Symphony No. 9 "New World Symphony")**

Antonin Dvorak (1841-1904)

Largo

Musical notation for the first exercise, 'THEME (from Symphony No. 9)'. It is in 4/4 time and begins with a piano (*p*) dynamic. The melody consists of a series of eighth and quarter notes, with a crescendo leading to a mezzo-piano (*mp*) dynamic and a final decrescendo to a piano (*p*) dynamic.

44 **TRUMPET VOLUNTARY**

Jeremiah Clarke (1674-1707)

Maestoso

Musical notation for the second exercise, 'TRUMPET VOLUNTARY'. It is in 4/4 time and begins with a mezzo-forte (*mf*) dynamic. The melody features a mix of eighth and quarter notes, with a prominent accent on a quarter note in the second measure.

45 **KUM BA YAH**

African Folk Song

Largo

Musical notation for the third exercise, 'KUM BA YAH'. It is in 4/4 time and begins with a mezzo-forte (*mf*) dynamic. The melody is characterized by a slow, spacious feel with a mix of quarter and half notes.

46 **AMERICA**

Musical notation for the fourth exercise, 'AMERICA'. It is in 3/4 time and begins with a mezzo-forte (*mf*) dynamic. The melody is a rhythmic sequence of eighth and quarter notes, ending with a crescendo to a forte (*f*) dynamic.

47 **AMAZING GRACE**

Musical notation for the fifth exercise, 'AMAZING GRACE'. It is in 3/4 time and begins with a mezzo-piano (*mp*) dynamic. The melody features a mix of eighth and quarter notes, with dynamics ranging from mezzo-piano (*mp*) to forte (*f*) and back to mezzo-piano (*mp*), ending with a piano (*p*) dynamic.

48 **THEME (from Swan Lake)**

Pyotr Ilyich Tchaikovsky (1840-1893)

Mournfully

Musical notation for the sixth exercise, 'THEME (from Swan Lake)'. It is in 4/4 time and begins with a mezzo-piano (*mp*) dynamic. The melody is a series of quarter notes, with a crescendo leading to a mezzo-forte (*mf*) dynamic. The piece concludes with a first ending (marked '1.') and a second ending (marked '2.').

49

MARINE'S HYMN

Allegro

Fine

Musical score for 'MARINE'S HYMN' in 2/4 time, starting with a forte (*f*) dynamic. The melody is written on a single staff. The piece concludes with a double bar line and repeat dots, followed by the instruction 'D.C. al Fine'.

50

THE YANKEE DOODLE BOY


Allegro

Musical score for 'THE YANKEE DOODLE BOY' in 2/4 time, starting with a mezzo-forte (*mf*) dynamic. The score includes two first endings (labeled '1.' and '2.') and concludes with a double bar line and repeat dots.

51

THEME (from Symphony No. 94 "The Surprise Symphony")

Franz Joseph Haydn (1732-1809)



Musical score for the 'THEME' from Symphony No. 94 in 4/4 time, starting with a mezzo-forte (*mf*) dynamic and ending with a forte (*f*) dynamic. The melody is written on a single staff.

52

CLASSICAL DANCE

Allegro

Wolfgang Amadeus Mozart (1756-1791)

Musical score for 'CLASSICAL DANCE' in 4/4 time, starting with a forte (*f*) dynamic and ending with a piano (*p*) dynamic. The score includes a ritardando (*rit.*) marking and concludes with a double bar line and repeat dots.

53

SHEPHERD'S HEY

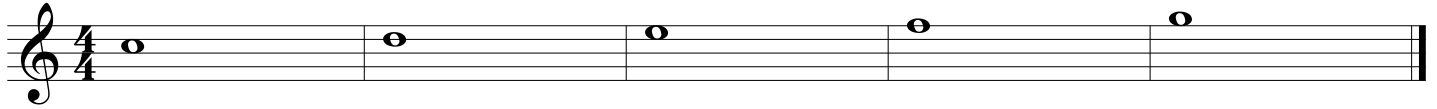
Moderato

English Folk Song

Fine

Musical score for 'SHEPHERD'S HEY' in 4/4 time, starting with a mezzo-forte (*mf*) dynamic and ending with a piano (*p*) dynamic. The score concludes with a double bar line and repeat dots, followed by the instruction 'D.C. al Fine'.

54



55

HOT CROSS BUNS

English Folk Song



56

MARY HAD A LITTLE LAMB

Traditional



57

ODE TO JOY (from Symphony No. 9)

Ludwig van Beethoven (1770-1827)



58

FIGHT SONG

Rachel Platten, Dave Bassett, Jon Levine



59

FIREWORK

Katy Perry, Mikkel S. Ericksen, Tor Erik Hermansen, Sandy Wilhelm, Ester Dean

