

Song Workbook for Tenor Sax

Practice Strategy

Count It! ⇨ Ta It! ⇨ Note Name It! ⇨ Finger It! ⇨ Play It!

Trouble? Chunk It! (Play the trouble spot many times in a row)

1 HOT CROSS BUNS

English Folk Song



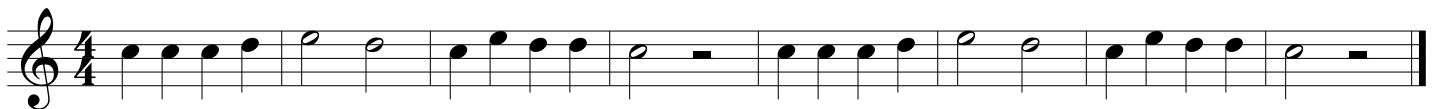
2 MARY HAD A LITTLE LAMB

Traditional



3 AU CLAIRE DE LA LUNE

French Folk Song



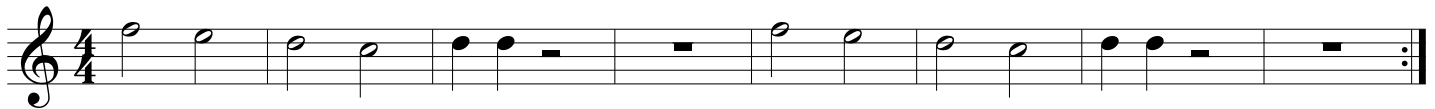
4 DOWN BY THE STATION

Traditional



5 WE WILL ROCK YOU

Queen



6 ODE TO JOY (from Symphony No. 9)

Ludwig van Beethoven (1770-1827)



7 GO TELL AUNT RHODY

American Folk Song



8 **A LA RUEDA** Spanish Folk Song

Solo/Soli Tutti Solo/Soli Tutti

9 **SWEETLY SINGS THE DONKEY** American Folk Song

10 **LIGHTLY ROW** Traditional

A

B

11 **CELEBRATION** Kool & the Gang (1980)

12 **BLUES IN F**

Pick any note to play!
Make sure to play it with a good tone!

13 SHARK ATTACK!

14 TWINKLE, TWINKLE

Wolfgang Amadeus Mozart (1756-1791)

15 ALOUETTE

French-Canadian Folk Song

16 SHOO FLY!

American Folk Song

17 RUSSIAN FOLK SONG (Duet)

Ludwig van Beethoven (1770-1827)

18 LONDON BRIDGE ▶ Change the AMOUNT of air you use. Always keep your AIR SPEED FAST!

English Folk Song

19 POLLY WOLLY DOODLE ▶ Are you GRADUALLY stepping up in volume every two measures?

American Folk Song

20

HOT CROSS ACCIDENTAL!



The "Rule of the Accidental" applies!

21

MARY HAD A KEY SIGNATURE!

★ Always check the key signature before you begin a piece! Then, look for any notes effected by it. You may want to mark these!



22

YANKEE DOODLE

★ Don't forget to check your key signature first and mark any notes that may be effected by it!

Traditional



23

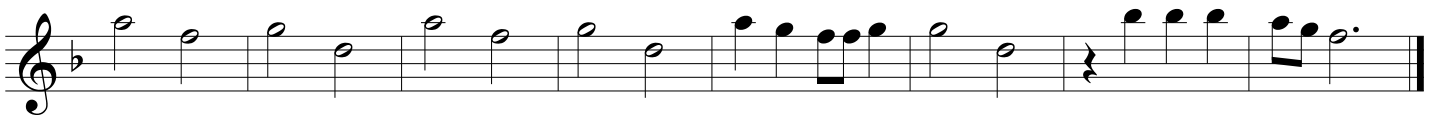
EIGHT DAYS A WEEK

John Lennon and Paul McCartney of The Beatles

Brightly



Fine



D.C. al Fine



24

SKIP TO MY LOU

American Folk Song

Solo 1

All

Solo 2

All



25

FRERE JACQUES

French Folk Song

①

②

③

④



mf

f

26

THIS OLD MAN

Traditional

Musical notation for 'THIS OLD MAN' in 4/4 time. The piece starts with a piano (*p*) dynamic and ends with a forte (*f*) dynamic. The melody consists of eighth and quarter notes.

27

HARD ROCK BLUES

Allegro

Musical notation for 'HARD ROCK BLUES' in 4/4 time. The tempo is marked 'Allegro'. The piece features a driving eighth-note melody with frequent rests.

28

ROCK & ROLL PART 2 (THE "HEY" SONG)

Heavy Rock Shuffle

Mike Leander and Gary Glitter

Musical notation for 'ROCK & ROLL PART 2 (THE "HEY" SONG)' in 4/4 time. The tempo is 'Heavy Rock Shuffle'. The melody is characterized by a shuffle feel with dotted rhythms and a key signature change to one sharp.

29

TROMBONE RAG

Allegro

Musical notation for 'TROMBONE RAG' in 4/4 time. The tempo is 'Allegro'. The piece includes first and second endings, indicated by '1.' and '2.' above the staff.

30

BLUES ADVENTURE

Allegro

Musical notation for 'BLUES ADVENTURE' in 4/4 time. The tempo is 'Allegro'. The piece starts with a forte (*f*) dynamic and ends with a *rit.* (ritardando) marking. The melody features various chromaticisms and slurs.

31

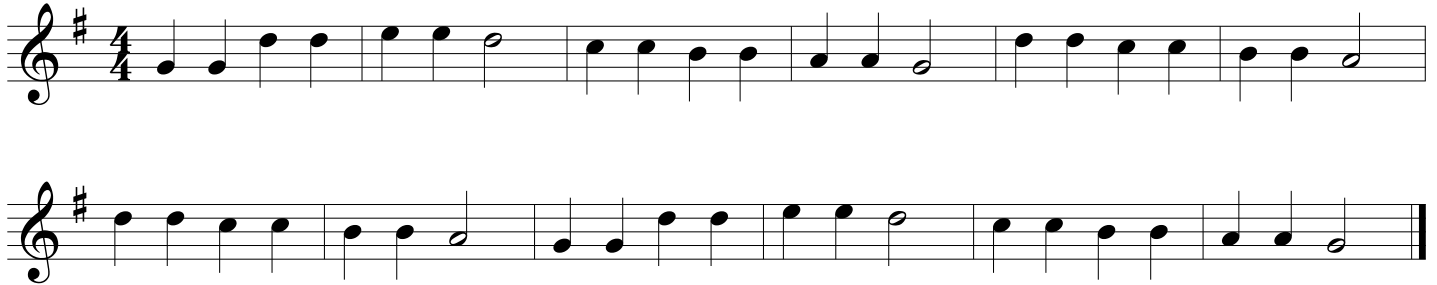
LEAN ON IT

An accent > indicates to play the marked note louder.



32

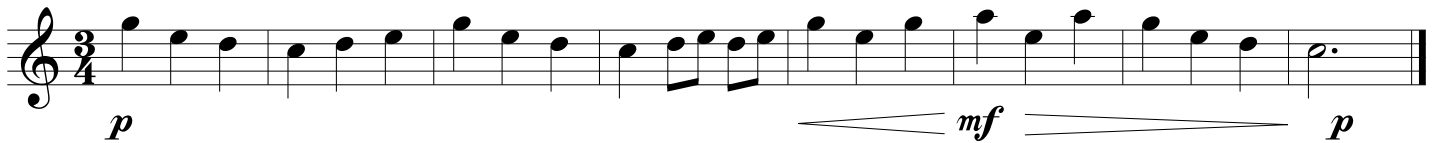
FALLING STAR



33

MORNING MOOD (from Peer Gynt)

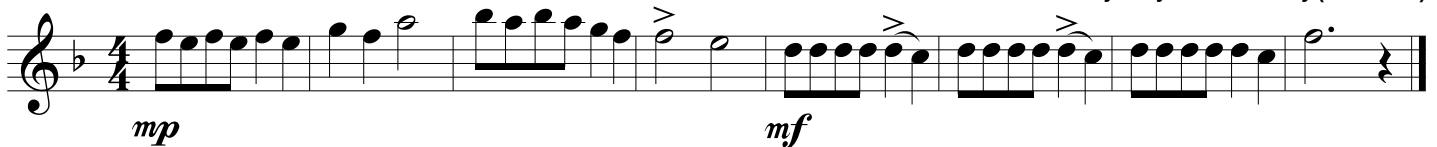
Edvard Grieg (1843-1907)



34

THEME (from the Nutcracker Ballet)

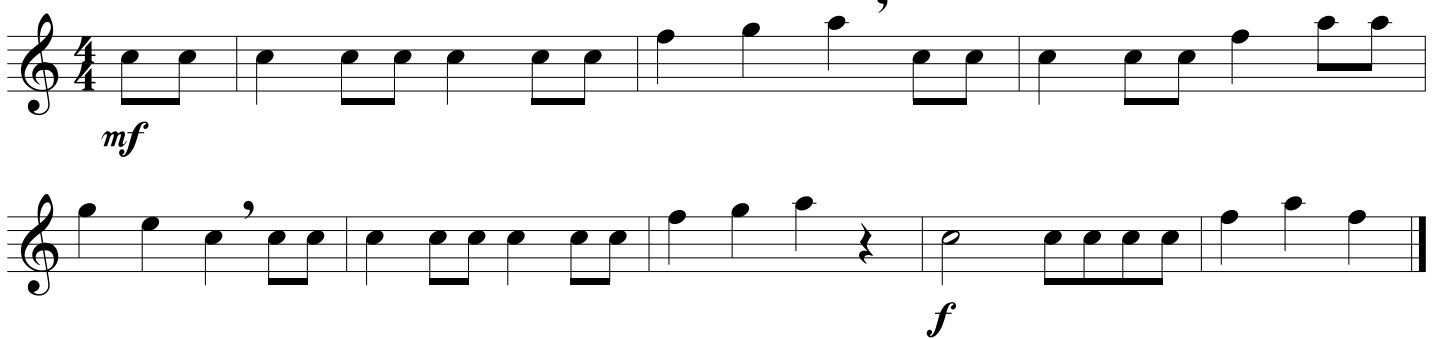
Pyotr Ilyich Tchaikovsky (1840-1893)



35

WILLIAM TELL OVERTURE

Gioachino Rossini (1792-1868)



36

HAPPY BIRTHDAY TO YOU



37 JOE AVERY'S BLUES (SECOND LINE)

Willie Norman "Bill" Sinegal (1928-2014)

Swing! ♩ = ♩³

Two staves of musical notation in 4/4 time. The first staff contains the first line of music, and the second staff contains the second line. The music features a swing feel and includes a triplet of eighth notes.

38 WHEN THE SAINTS GO MARCHING IN

Allegro

Two staves of musical notation in 4/4 time. The first staff contains the first line of music, and the second staff contains the second line. The music is in a major key and includes first and second endings.

39 STAR WARS (Main Theme)

John Williams

One staff of musical notation in 4/4 time. The music is in a major key and features a triplet of eighth notes.

40 MINUET IN G (from the Anna Magdalena Notebook)

Johann Sebastian Bach (1685-1750)

Moderato

Two staves of musical notation in 3/4 time. The first staff contains the first line of music, and the second staff contains the second line. The music is in a major key and includes first and second endings.

41 LULLABY

Johannes Brahms (1833-1897)

One staff of musical notation in 3/4 time. The music is in a major key and includes a piano (*p*) dynamic marking.

42 THEME (from "Orpheus in the Underworld")

Jacques Offenbach (1819-1880)

Allegro

One staff of musical notation in 2/4 time. The music is in a major key and includes first and second endings, as well as accent (>) markings.

43 **THEME (from Symphony No. 9 "New World Symphony")**

Antonin Dvorak (1841-1904)

Largo

p *mp* *p*

44 **TRUMPET VOLUNTARY**

Jeremiah Clarke (1674-1707)

Maestoso

mf

45 **KUM BA YAH**

African Folk Song

Largo

mf

46 **AMERICA**

mf *f*

47 **AMAZING GRACE**

mp *f* *mp* *p*

48 **THEME (from Swan Lake)**

Pyotr Ilyich Tchaikovsky (1840-1893)

Mournfully

mp *mf*

1. 2.

49

MARINE'S HYMN

Allegro

Fine

Musical score for 'MARINE'S HYMN' in 2/4 time. The first staff begins with a treble clef and a dynamic marking of *f*. The second staff concludes with a dynamic marking of *f* and the instruction 'D.C. al Fine'.

50

THE YANKEE DOODLE BOY

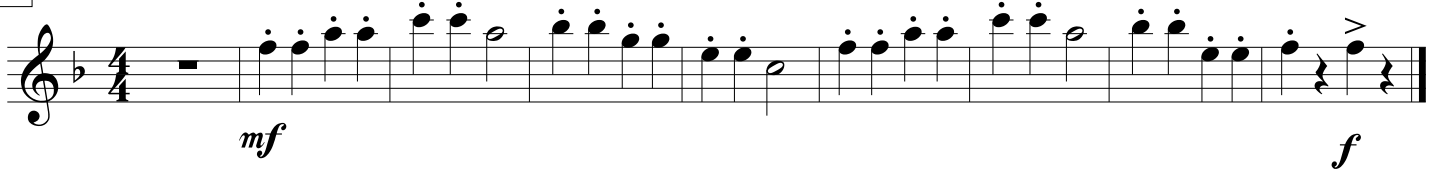
Allegro

Musical score for 'THE YANKEE DOODLE BOY' in 2/4 time. It features two first endings (marked '1.' and '2.') and concludes with a repeat sign and a final cadence.

51

THEME (from Symphony No. 94 "The Surprise Symphony")

Franz Joseph Haydn (1732-1809)



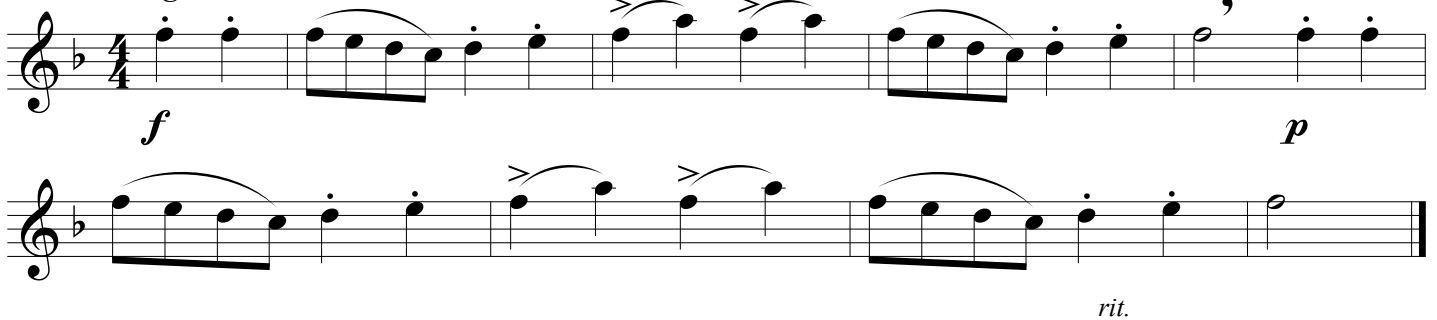
Musical score for the theme from 'Symphony No. 94' in 4/4 time. It starts with a dynamic marking of *mf* and ends with a dynamic marking of *f*.

52

CLASSICAL DANCE

Allegro

Wolfgang Amadeus Mozart (1756-1791)



Musical score for 'CLASSICAL DANCE' in 4/4 time. It features dynamic markings of *f* and *p*, and concludes with the instruction 'rit.'.

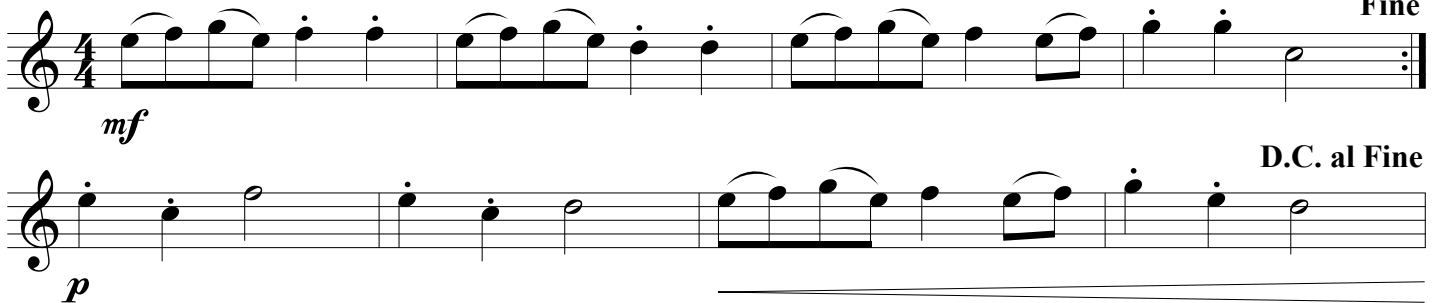
53

SHEPHERD'S HEY

Moderato

English Folk Song

Fine



Musical score for 'SHEPHERD'S HEY' in 4/4 time. The first staff begins with a dynamic marking of *mf*. The second staff concludes with a dynamic marking of *p* and the instruction 'D.C. al Fine'.

