

8 **A LA RUEDA** Spanish Folk Song
Solo/Soli Tutti Solo/Soli Tutti

Musical notation for 'A LA RUEDA' in 4/4 time, key of B-flat major. The melody consists of a sequence of eighth and quarter notes, ending with a repeat sign.

9 **SWEETLY SINGS THE DONKEY** American Folk Song

Musical notation for 'SWEETLY SINGS THE DONKEY' in 4/4 time, key of B-flat major. The melody is divided into three measures, each starting with a circled number (1, 2, 3) indicating a specific rhythmic pattern.

10 **LIGHTLY ROW** Traditional

Musical notation for 'LIGHTLY ROW' in 4/4 time, key of B-flat major. It features two staves, A and B, with a call-and-response structure. Staff A has a melody of eighth notes, while staff B has a complementary melody of eighth notes.

11 **CELEBRATION** Kool & the Gang (1980)

Musical notation for 'CELEBRATION' in 4/4 time, key of B-flat major. The melody starts with a whole rest, followed by a sequence of eighth and quarter notes with a syncopated rhythm.

12 **BLUES IN F**

Musical notation for 'BLUES IN F' in 4/4 time, key of F major. The melody consists of a sequence of eighth and quarter notes, ending with a repeat sign.

Pick any note to play!
Make sure to play it with a good tone!

13 SHARK ATTACK!

14 TWINKLE, TWINKLE

Wolfgang Amadeus Mozart (1756-1791)

15 ALOUETTE

French-Canadian Folk Song

16 SHOO FLY!

American Folk Song

17 RUSSIAN FOLK SONG (Duet)

Ludwig van Beethoven (1770-1827)

18 LONDON BRIDGE ▶ Change the AMOUNT of air you use. Always keep your AIR SPEED FAST!

English Folk Song

19 POLLY WOLLY DOODLE ▶ Are you GRADUALLY stepping up in volume every two measures?

American Folk Song

20 HOT CROSS ACCIDENTAL!

The "Rule of the Accidental" applies!

21 MARY HAD A KEY SIGNATURE!

★ Always check the key signature before you begin a piece! Then, look for any notes effected by it. You may want to mark these!

22 YANKEE DOODLE

★ Don't forget to check your key signature first and mark any notes that may be effected by it!

Traditional

23 EIGHT DAYS A WEEK

John Lennon and Paul McCartney of The Beatles

Brightly

Fine

D.C. al Fine

24 SKIP TO MY LOU

American Folk Song

25 FRERE JACQUES

French Folk Song

26

THIS OLD MAN

Traditional

Musical notation for 'THIS OLD MAN' in G major, 4/4 time. The piece starts with a piano (*p*) dynamic and ends with a forte (*f*) dynamic. The melody consists of a series of eighth and quarter notes, with a final flourish of sixteenth notes.

27

HARD ROCK BLUES

Allegro

Musical notation for 'HARD ROCK BLUES' in G major, 4/4 time. The tempo is marked 'Allegro'. The melody features a mix of eighth and quarter notes with frequent rests, creating a rhythmic, bluesy feel. There are two dynamic markings: a hairpin crescendo and a hairpin decrescendo.

28

ROCK & ROLL PART 2 (THE "HEY" SONG)

Heavy Rock Shuffle

Mike Leander and Gary Glitter

Musical notation for 'ROCK & ROLL PART 2 (THE "HEY" SONG)' in G major, 4/4 time. The tempo is 'Heavy Rock Shuffle'. The melody is characterized by a shuffle rhythm with many eighth-note rests. It includes a repeat sign with first and second endings.

29

TROMBONE RAG

Allegro

Musical notation for 'TROMBONE RAG' in G major, 4/4 time. The tempo is 'Allegro'. The melody is a lively, rhythmic piece with many eighth notes and rests. It features a first ending and a second ending with a fermata.

30

BLUES ADVENTURE

Allegro

Musical notation for 'BLUES ADVENTURE' in G major, 4/4 time. The tempo is 'Allegro'. The melody is a bluesy piece with many eighth notes and rests. It starts with a forte (*f*) dynamic and ends with a *rit.* (ritardando) marking.

31 LEAN ON IT

An accent > indicates to play the marked note louder.

Musical notation for 'Lean on It' in 4/4 time, key of B-flat major. The melody consists of eighth notes with accents (>) on the 3rd, 7th, 11th, and 15th notes.

32 FALLING STAR

Musical notation for 'Falling Star' in 4/4 time, key of B-flat major. The melody consists of quarter notes and half notes.

33 MORNING MOOD (from Peer Gynt)

Edvard Grieg (1843-1907)

Musical notation for 'Morning Mood' in 3/4 time, key of B-flat major. The melody starts with a piano (*p*) dynamic, followed by a crescendo to mezzo-forte (*mf*), and ends with a decrescendo to piano (*p*).

34 THEME (from the Nutcracker Ballet)

Pyotr Ilyich Tchaikovsky (1840-1893)

Musical notation for 'Theme from the Nutcracker Ballet' in 4/4 time, key of B-flat major. The melody starts with mezzo-piano (*mp*) and includes accents (>) and slurs.

35 WILLIAM TELL OVERTURE

Gioachino Rossini (1792-1868)

Musical notation for 'William Tell Overture' in 4/4 time, key of B-flat major. The melody starts with mezzo-forte (*mf*) and includes accents (>) and a crescendo to forte (*f*).

36 HAPPY BIRTHDAY TO YOU

Musical notation for 'Happy Birthday to You' in 3/4 time, key of B-flat major. The melody includes accents (>) and a slur.

37 JOE AVERY'S BLUES (SECOND LINE)

Willie Norman "Bill" Sinegal (1928-2014)

Swing! $\text{♪♪} = \text{♪}^3 \text{♪}$

Musical notation for Joe Avery's Blues (Second Line). It consists of two staves of music in 4/4 time, key of B-flat major. The first staff contains the first line of the melody, and the second staff contains the second line. The tempo is marked 'Swing!' with a rhythmic example $\text{♪♪} = \text{♪}^3 \text{♪}$.

38 WHEN THE SAINTS GO MARCHING IN

Allegro

Musical notation for When the Saints Go Marching In. It consists of two staves of music in 4/4 time, key of B-flat major. The first staff contains the first line of the melody, and the second staff contains the second line. The tempo is marked 'Allegro'. The second staff includes first and second endings.

39 STAR WARS (Main Theme)

John Williams

Musical notation for Star Wars (Main Theme). It consists of one staff of music in 4/4 time, key of B-flat major. The tempo is marked 'Moderato'. The melody features three triplet markings.

40 MINUET IN G (from the Anna Magdalena Notebook)

Johann Sebastian Bach (1685-1750)

Moderato

Musical notation for Minuet in G. It consists of two staves of music in 3/4 time, key of G major. The tempo is marked 'Moderato'. The first staff contains the first line of the melody, and the second staff contains the second line. The second staff includes first and second endings.

41 LULLABY

Johannes Brahms (1833-1897)

Musical notation for Lullaby. It consists of one staff of music in 3/4 time, key of B-flat major. The tempo is marked 'p' (piano). The melody is a simple, gentle lullaby.

42 THEME (from "Orpheus in the Underworld")

Jacques Offenbach (1819-1880)

Allegro

Musical notation for Theme from "Orpheus in the Underworld". It consists of one staff of music in 2/4 time, key of B-flat major. The tempo is marked 'Allegro'. The melody is a lively, rhythmic theme. The second staff includes first and second endings.

43 **THEME (from Symphony No. 9 "New World Symphony")**
Largo

Antonin Dvorak (1841-1904)

p *mp* *p*

44 **TRUMPET VOLUNTARY**
Maestoso

Jeremiah Clarke (1674-1707)

mf

45 **KUM BA YAH**
Largo

African Folk Song

mf

46 **AMERICA**

mf *f*

47 **AMAZING GRACE**

mp *f* *mp* *p*

48 **THEME (from Swan Lake)**
Mournfully

Pyotr Ilyich Tchaikovsky (1840-1893)

mp *mf*

1. 2.

49

MARINE'S HYMN

Allegro

Fine

Musical score for Marine's Hymn, featuring two staves of music in 2/4 time. The first staff begins with a treble clef and a key signature of two flats. The music is marked with a forte *f* dynamic. The piece concludes with a double bar line and repeat dots, followed by the instruction "D.C. al Fine".

50

THE YANKEE DOODLE BOY

Allegro

Musical score for The Yankee Doodle Boy, featuring three staves of music in 2/4 time. The first staff begins with a treble clef and a key signature of two flats. The piece includes two first endings, labeled "1." and "2.", each with a repeat sign. The music concludes with a double bar line and repeat dots.

51

THEME (from Symphony No. 94 "The Surprise Symphony")

Franz Joseph Haydn (1732-1809)

Musical score for the Theme from Symphony No. 94, featuring a single staff of music in 4/4 time. The piece begins with a treble clef and a key signature of two flats. The music is marked with a mezzo-forte *mf* dynamic and concludes with a double bar line and repeat dots, followed by a forte *f* dynamic marking.

52

CLASSICAL DANCE

Allegro

Wolfgang Amadeus Mozart (1756-1791)

Musical score for Classical Dance, featuring two staves of music in 4/4 time. The first staff begins with a treble clef and a key signature of two flats. The music is marked with a forte *f* dynamic and includes accents (>) and a piano *p* dynamic. The piece concludes with a double bar line and repeat dots, followed by the instruction "rit." (ritardando).

53

SHEPHERD'S HEY

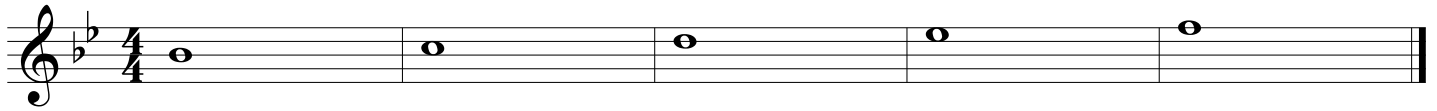
Moderato

English Folk Song

Fine

Musical score for Shepherd's Hey, featuring two staves of music in 4/4 time. The first staff begins with a treble clef and a key signature of two flats. The music is marked with a mezzo-forte *mf* dynamic. The piece concludes with a double bar line and repeat dots, followed by the instruction "D.C. al Fine".

54



55

HOT CROSS BUNS

English Folk Song



56

MARY HAD A LITTLE LAMB

Traditional



57

ODE TO JOY (from Symphony No. 9)

Ludwig van Beethoven (1770-1827)



58

FIGHT SONG

Rachel Platten, Dave Bassett, Jon Levine



59

FIREWORK

Katy Perry, Mikkel S. Ericksen, Tor Erik Hermansen, Sandy Wilhelm, Ester Dean

