

# Song Workbook for Horn in F

## Practice Strategy

Count It! ⇨ Ta It! ⇨ Note Name It! ⇨ Finger It! ⇨ Play It!

*Trouble?* Chunk It! (Play the trouble spot many times in a row)

### 1 HOT CROSS BUNS

English Folk Song



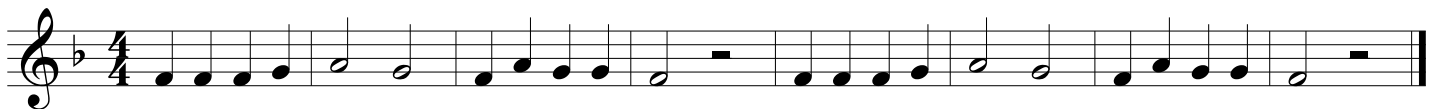
### 2 MARY HAD A LITTLE LAMB

Traditional



### 3 AU CLAIRE DE LA LUNE

French Folk Song



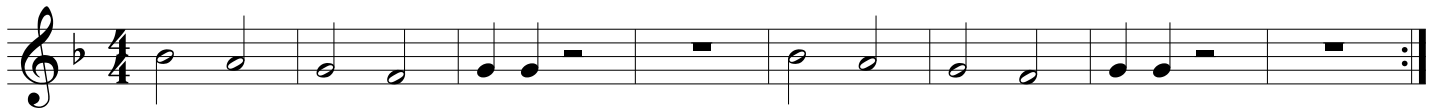
### 4 DOWN BY THE STATION

Traditional



### 5 WE WILL ROCK YOU

Queen



### 6 ODE TO JOY (from Symphony No. 9)

Ludwig van Beethoven (1770-1827)



### 7 GO TELL AUNT RHODY

American Folk Song



**8** **A LA RUEDA** Spanish Folk Song  
Solo/Soli Tutti Solo/Soli Tutti

Musical notation for 'A LA RUEDA' in 4/4 time, key of B-flat major. The melody consists of a sequence of eighth and quarter notes, ending with a repeat sign.

**9** **SWEETLY SINGS THE DONKEY** American Folk Song

Musical notation for 'SWEETLY SINGS THE DONKEY' in 4/4 time, key of B-flat major. The melody is divided into three measures, each starting with a circled number (1, 2, 3) indicating a first ending or measure repeat.

**10** **LIGHTLY ROW** Traditional

Musical notation for 'LIGHTLY ROW' in 4/4 time, key of B-flat major. It features two parts, A and B, with part A playing a melody and part B playing a rhythmic accompaniment of eighth notes.

**11** **CELEBRATION** Kool & the Gang (1980)

Musical notation for 'CELEBRATION' in 4/4 time, key of B-flat major. The melody starts with a whole rest followed by a series of eighth and quarter notes.

**12** **BLUES IN F**

Musical notation for 'BLUES IN F' in 4/4 time, key of F major. The melody consists of a sequence of eighth and quarter notes, ending with a repeat sign.

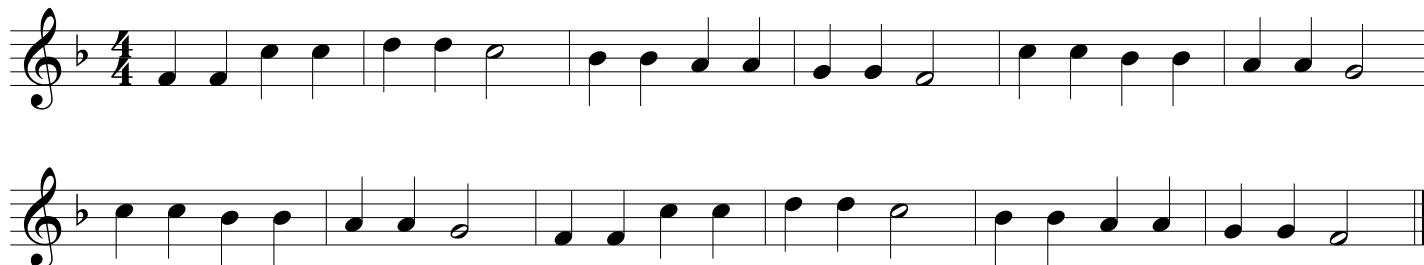
Pick any note to play!  
Make sure to play it with a good tone!

**13 SHARK ATTACK!**



**14 TWINKLE, TWINKLE**

Wolfgang Amadeus Mozart (1756-1791)



**15 ALOUETTE**

French-Canadian Folk Song



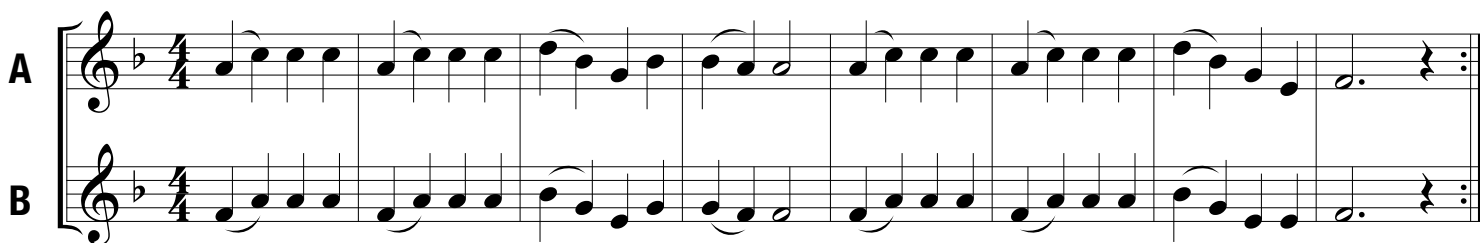
**16 SHOO FLY!**

American Folk Song



**17 RUSSIAN FOLK SONG (Duet)**

Ludwig van Beethoven (1770-1827)



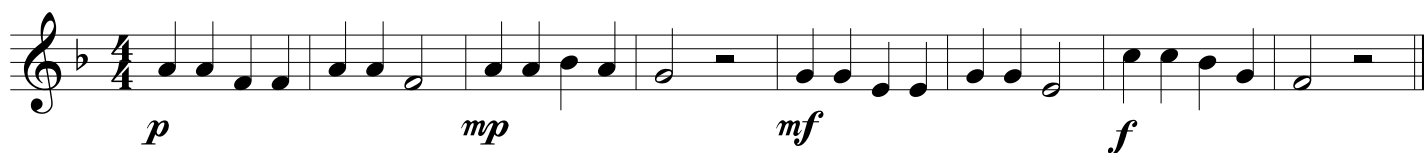
**18 LONDON BRIDGE** ▶ Change the AMOUNT of air you use. Always keep your AIR SPEED FAST!

English Folk Song



**19 POLLY WOLLY DOODLE** ▶ Are you GRADUALLY stepping up in volume every two measures?

American Folk Song





26

THIS OLD MAN

Traditional

Musical notation for 'THIS OLD MAN' in 4/4 time, key of B-flat major. The piece starts with a piano (*p*) dynamic and ends with a forte (*f*) dynamic. The melody consists of eighth and quarter notes.

27

HARD ROCK BLUES

Allegro

Musical notation for 'HARD ROCK BLUES' in 4/4 time, key of B-flat major. The tempo is marked 'Allegro'. The piece features eighth and quarter notes with rests, and includes dynamic markings for crescendo and decrescendo.

28

ROCK & ROLL PART 2 (THE "HEY" SONG)

Heavy Rock Shuffle

Mike Leander and Gary Glitter

Musical notation for 'ROCK & ROLL PART 2 (THE "HEY" SONG)' in 4/4 time, key of B-flat major. The tempo is 'Heavy Rock Shuffle'. The piece includes a repeat sign and a double bar line.

29

TROMBONE RAG

Allegro

Musical notation for 'TROMBONE RAG' in 4/4 time, key of B-flat major. The tempo is 'Allegro'. The piece includes first and second endings, indicated by '1.' and '2.' above the staff.

30

BLUES ADVENTURE

Allegro

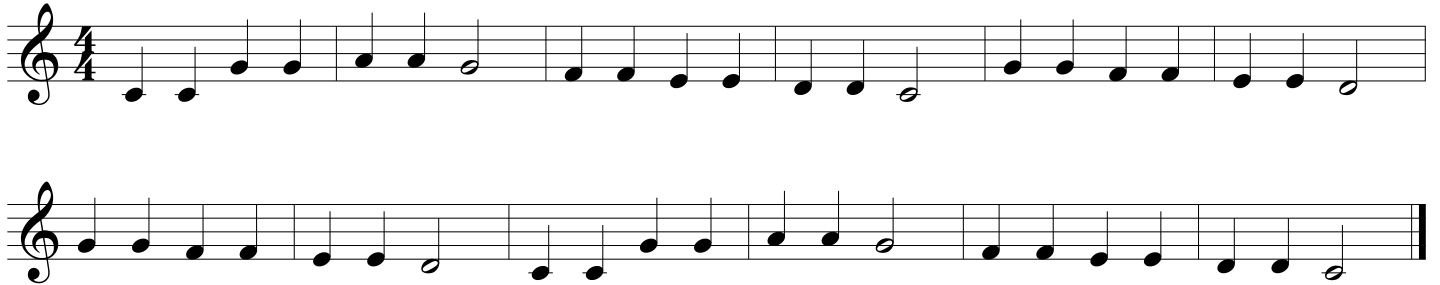
Musical notation for 'BLUES ADVENTURE' in 4/4 time, key of B-flat major. The tempo is 'Allegro'. The piece starts with a forte (*f*) dynamic and ends with a *rit.* (ritardando) marking.

**31 LEAN ON IT**

An accent > indicates to play the marked note louder.

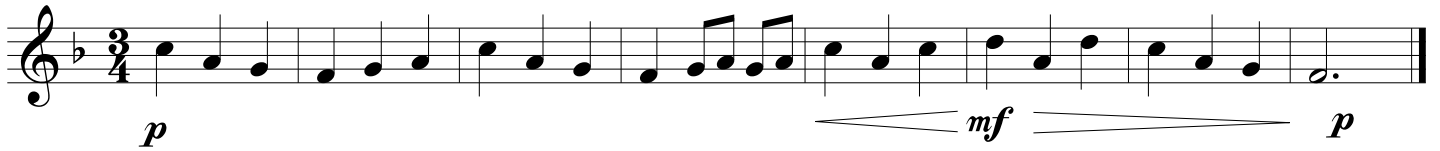


**32 FALLING STAR**



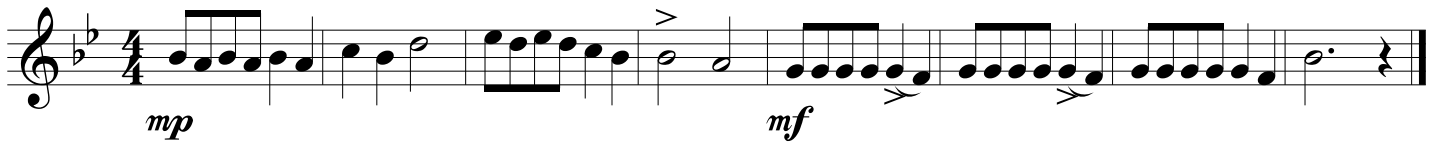
**33 MORNING MOOD (from Peer Gynt)**

Edvard Grieg (1843-1907)



**34 THEME (from the Nutcracker Ballet)**

Pyotr Ilyich Tchaikovsky (1840-1893)



**35 WILLIAM TELL OVERTURE**

Gioachino Rossini (1792-1868)



**36 HAPPY BIRTHDAY TO YOU**



**37** JOE AVERY'S BLUES (SECOND LINE)

Willie Norman "Bill" Sinegal (1928-2014)

Swing! ♩ = ♩<sup>3</sup>♩

Two staves of musical notation in 4/4 time, key of B-flat major. The first staff contains the main melody with a triplet of eighth notes. The second staff continues the melody with a final triplet.

**38** WHEN THE SAINTS GO MARCHING IN

Allegro

Two staves of musical notation in 4/4 time, key of B-flat major. The first staff shows the beginning of the piece with a repeat sign. The second staff continues the melody and includes first and second endings.

**39** STAR WARS (Main Theme)

John Williams

One staff of musical notation in 4/4 time, key of B-flat major. The melody features three triplet eighth notes.

**40** MINUET IN G (from the Anna Magdalena Notebook)

Johann Sebastian Bach (1685-1750)

Moderato

Two staves of musical notation in 3/4 time, key of G major. The first staff shows the beginning of the piece. The second staff continues the melody and includes first and second endings.

**41** LULLABY

Johannes Brahms (1833-1897)

One staff of musical notation in 3/4 time, key of B-flat major. The melody begins with a piano (*p*) dynamic marking.

**42** THEME (from "Orpheus in the Underworld")

Jacques Offenbach (1819-1880)

Allegro

One staff of musical notation in 2/4 time, key of B-flat major. The melody includes accents and first and second endings.

**43** **THEME (from Symphony No. 9 "New World Symphony")**  
Largo

Antonin Dvorak (1841-1904)

*p* *mp* *p*

**44** **TRUMPET VOLUNTARY**  
Maestoso

Jeremiah Clarke (1674-1707)

*mf*

**45** **KUM BA YAH**  
Largo

African Folk Song

*mf*

**46** **AMERICA**

*mf* *f*

**47** **AMAZING GRACE**

*mp* *f* *mp* *p*

**48** **THEME (from Swan Lake)**  
Mournfully

Pyotr Ilyich Tchaikovsky (1840-1893)

*mp* *mf*



49

MARINE'S HYMN

Allegro

Fine

Musical notation for Marine's Hymn, consisting of two staves. The first staff begins with a treble clef, a key signature of one flat (B-flat), and a 2/4 time signature. The melody starts with a forte (*f*) dynamic. The piece concludes with a double bar line and repeat dots, followed by the instruction "D.C. al Fine".

50

THE YANKEE DOODLE BOY

Allegro

Musical notation for The Yankee Doodle Boy, consisting of three staves. The first staff begins with a treble clef, a key signature of one flat (B-flat), and a 2/4 time signature. The melody is marked with a forte (*f*) dynamic. The second and third staves show two different endings, labeled "1." and "2.", both ending with a double bar line and repeat dots.

51

THEME (from Symphony No. 94 "The Surprise Symphony")

Franz Joseph Haydn (1732-1809)

Musical notation for the Theme from Symphony No. 94, consisting of one staff. It begins with a treble clef, a key signature of one flat (B-flat), and a 4/4 time signature. The melody is marked with a mezzo-forte (*mf*) dynamic, which increases to a forte (*f*) dynamic towards the end of the piece.

52

CLASSICAL DANCE

Allegro

Wolfgang Amadeus Mozart (1756-1791)

Musical notation for Classical Dance, consisting of two staves. The first staff begins with a treble clef, a key signature of one flat (B-flat), and a 4/4 time signature. The melody is marked with a forte (*f*) dynamic. The second staff continues the melody and includes a piano (*p*) dynamic marking and a ritardando (*rit.*) instruction.

53

SHEPHERD'S HEY

Moderato

English Folk Song

Fine

Musical notation for Shepherd's Hey, consisting of two staves. The first staff begins with a treble clef, a key signature of one flat (B-flat), and a 4/4 time signature. The melody is marked with a mezzo-forte (*mf*) dynamic. The second staff continues the melody and includes a piano (*p*) dynamic marking and the instruction "D.C. al Fine".

