

Song Workbook for Flute

Practice Strategy

Count It! ⇨ Ta It! ⇨ Note Name It! ⇨ Finger It! ⇨ Play It!

Trouble? Chunk It! *(Play the trouble spot many times in a row)*

1 HOT CROSS BUNS

English Folk Song



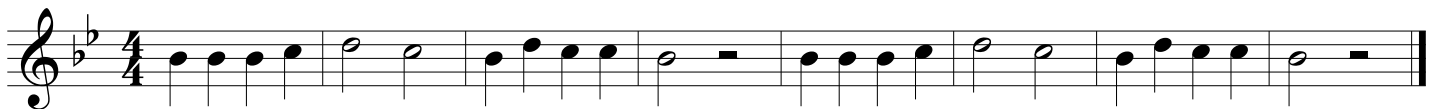
2 MARY HAD A LITTLE LAMB

Traditional



3 AU CLAIRE DE LA LUNE

French Folk Song



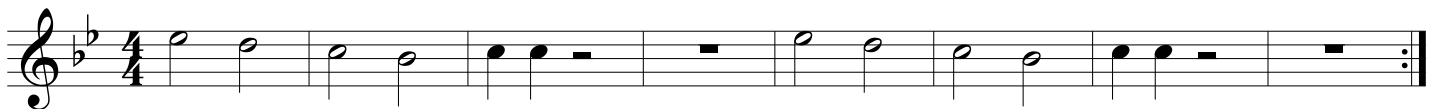
4 DOWN BY THE STATION

Traditional



5 WE WILL ROCK YOU

Queen



6 ODE TO JOY (from Symphony No. 9)

Ludwig van Beethoven (1770-1827)



7 GO TELL AUNT RHODY

American Folk Song



8 **A LA RUEDA** Spanish Folk Song

Solo/Soli Tutti Solo/Soli Tutti

9 **SWEETLY SINGS THE DONKEY** American Folk Song

10 **LIGHTLY ROW** Traditional

A

B

11 **CELEBRATION** Kool & the Gang (1980)

12 **BLUES IN F**

Pick any note to play!
Make sure to play it with a good tone!

13 SHARK ATTACK!

Musical notation for 'SHARK ATTACK!' in 4/4 time, featuring a melody with a shark fin icon at the end.

14 TWINKLE, TWINKLE

Wolfgang Amadeus Mozart (1756-1791)

Musical notation for 'TWINKLE, TWINKLE' in 4/4 time, consisting of two staves of a simple melody.

15 ALOUETTE

French-Canadian Folk Song

Musical notation for 'ALOUETTE' in 4/4 time, featuring a melody with a dotted half note.

16 SHOO FLY!

American Folk Song

Musical notation for 'SHOO FLY!' in 4/4 time, featuring a melody with accents.

17 RUSSIAN FOLK SONG (Duet)

Ludwig van Beethoven (1770-1827)

Musical notation for 'RUSSIAN FOLK SONG (Duet)' in 4/4 time, featuring two staves labeled A and B.

18 LONDON BRIDGE ▶ Change the AMOUNT of air you use. Always keep your AIR SPEED FAST!

English Folk Song

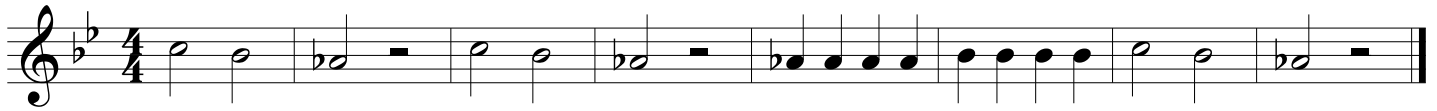
Musical notation for 'LONDON BRIDGE' in 4/4 time, featuring a melody with dynamic markings *f* and *p*.

19 POLLY WOLLY DOODLE ▶ Are you GRADUALLY stepping up in volume every two measures?

American Folk Song

Musical notation for 'POLLY WOLLY DOODLE' in 4/4 time, featuring a melody with dynamic markings *p*, *mp*, *mf*, and *f*.

20 HOT CROSS ACCIDENTAL!



↑
The "Rule of the Accidental" applies!

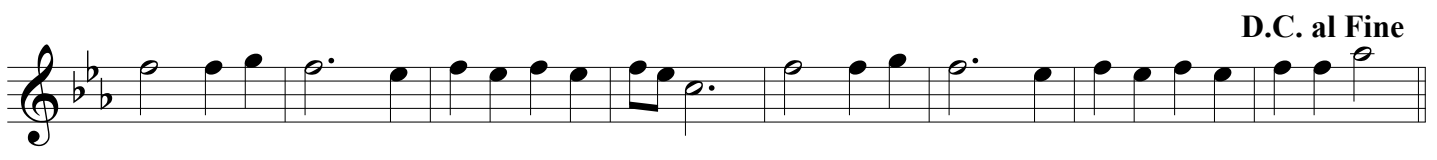
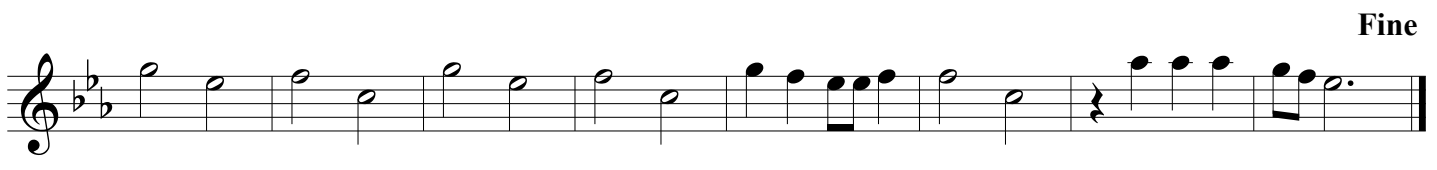
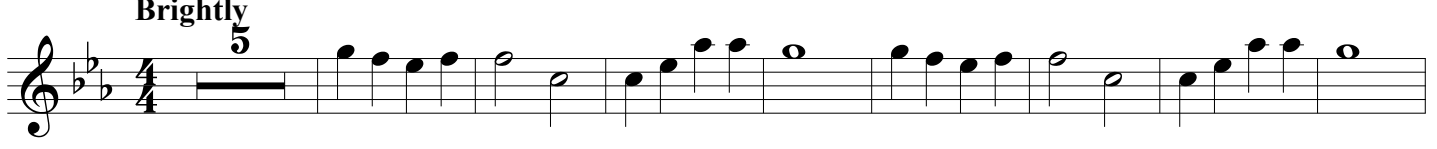
21 MARY HAD A KEY SIGNATURE! ★ Always check the key signature before you begin a piece! Then, look for any notes effected by it. You may want to mark these!



22 YANKEE DOODLE ★ Don't forget to check your key signature first and mark any notes that may be effected by it! Traditional



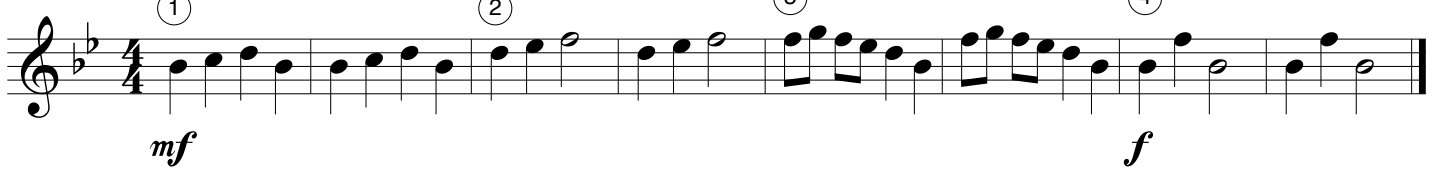
23 EIGHT DAYS A WEEK John Lennon and Paul McCartney of The Beatles



24 SKIP TO MY LOU American Folk Song



25 FRERE JACQUES French Folk Song



26

THIS OLD MAN

Traditional

Musical notation for 'THIS OLD MAN' in 4/4 time, key of B-flat major. The piece starts with a piano (*p*) dynamic and ends with a forte (*f*) dynamic. The melody consists of eighth and quarter notes.

27

HARD ROCK BLUES

Allegro

Musical notation for 'HARD ROCK BLUES' in 4/4 time, key of B-flat major. The tempo is marked 'Allegro'. The piece features a bluesy melody with eighth and quarter notes, and rests.

28

ROCK & ROLL PART 2 (THE "HEY" SONG)

Heavy Rock Shuffle

Mike Leander and Gary Glitter

Musical notation for 'ROCK & ROLL PART 2 (THE "HEY" SONG)' in 4/4 time, key of B-flat major. The tempo is marked 'Heavy Rock Shuffle'. The piece features a shuffle rhythm with eighth and quarter notes.

29

TROMBONE RAG

Allegro

Musical notation for 'TROMBONE RAG' in 4/4 time, key of B-flat major. The tempo is marked 'Allegro'. The piece features a melody with eighth and quarter notes, and a first/second ending section.

30

BLUES ADVENTURE

Allegro

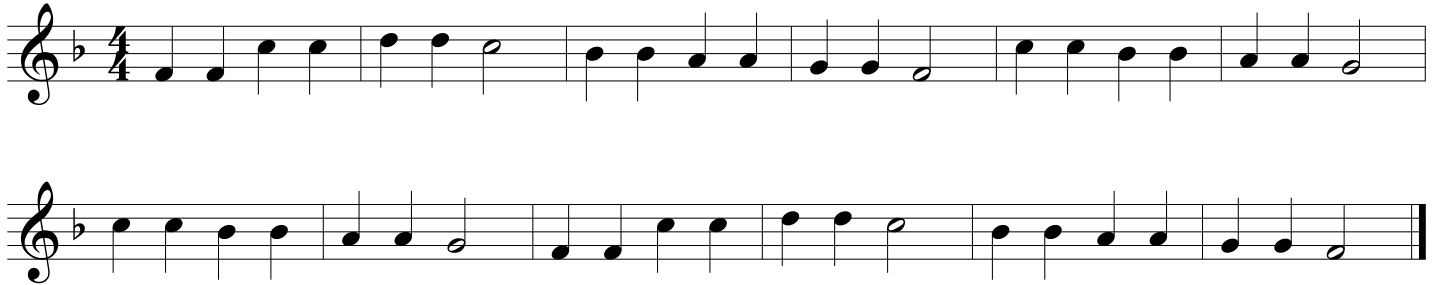
Musical notation for 'BLUES ADVENTURE' in 4/4 time, key of B-flat major. The tempo is marked 'Allegro'. The piece starts with a forte (*f*) dynamic and ends with a ritardando (*rit.*) dynamic. The melody features eighth and quarter notes with various articulations.

31 LEAN ON IT

An accent > indicates to play the marked note louder.



32 FALLING STAR



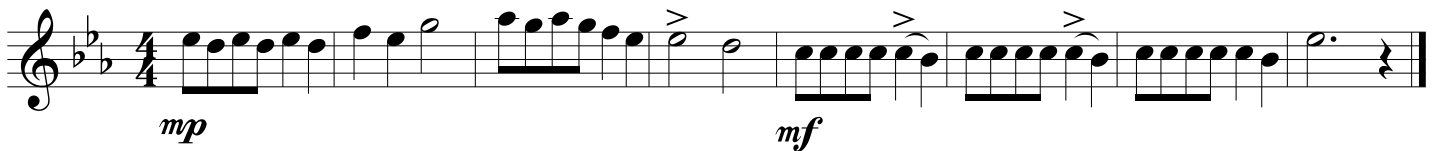
33 MORNING MOOD (from Peer Gynt)

Edvard Grieg (1843-1907)



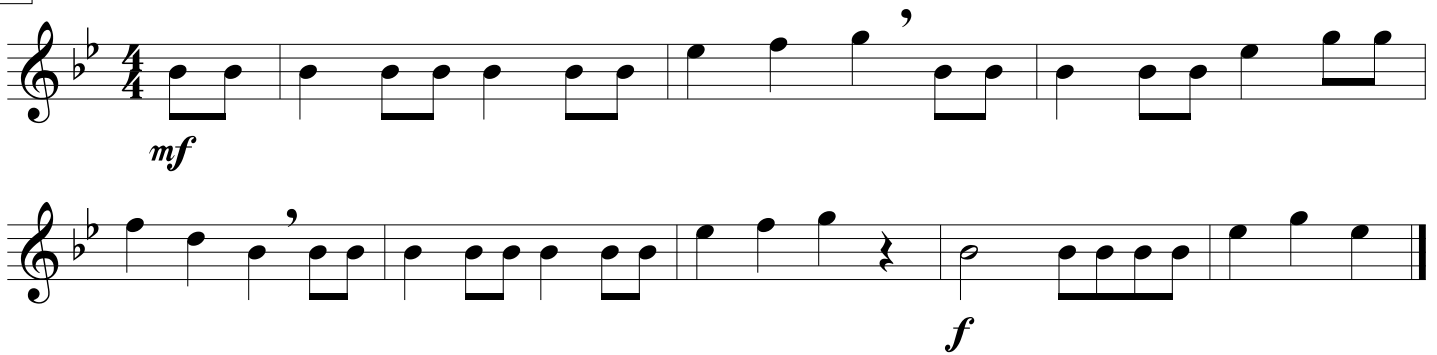
34 THEME (from the Nutcracker Ballet)

Pyotr Ilyich Tchaikovsky (1840-1893)



35 WILLIAM TELL OVERTURE

Gioachino Rossini (1792-1868)



36 HAPPY BIRTHDAY TO YOU



37 JOE AVERY'S BLUES (SECOND LINE)

Willie Norman "Bill" Sinegal (1928-2014)

Swing! ♩ = ♩³

Two staves of musical notation in 4/4 time, key of B-flat major. The first staff contains the main melody with a triplet of eighth notes. The second staff contains a bass line with a similar triplet pattern.

38 WHEN THE SAINTS GO MARCHING IN

Allegro

Two staves of musical notation in 4/4 time, key of B-flat major. The first staff contains the main melody with a repeat sign. The second staff contains a bass line with a first and second ending.

39 STAR WARS (Main Theme)

John Williams

One staff of musical notation in 4/4 time, key of B-flat major. The melody features a prominent triplet of eighth notes.

40 MINUET IN G (from the Anna Magdalena Notebook)

Johann Sebastian Bach (1685-1750)

Moderato

Two staves of musical notation in 3/4 time, key of G major. The first staff contains the main melody. The second staff contains a bass line with a first and second ending.

41 LULLABY

Johannes Brahms (1833-1897)

One staff of musical notation in 3/4 time, key of B-flat major. The melody is marked with a piano (*p*) dynamic.

42 THEME (from "Orpheus in the Underworld")

Jacques Offenbach (1819-1880)

Allegro

One staff of musical notation in 2/4 time, key of B-flat major. The melody features accents and a first and second ending.

43 **THEME (from Symphony No. 9 "New World Symphony")**

Antonin Dvorak (1841-1904)

Largo

p *mp* *p*

44 **TRUMPET VOLUNTARY**

Jeremiah Clarke (1674-1707)

Maestoso

mf

45 **KUM BA YAH**

African Folk Song

Largo

mf

46 **AMERICA**

mf *f*

47 **AMAZING GRACE**

mp *f* *mp* *p*

48 **THEME (from Swan Lake)**

Pyotr Ilyich Tchaikovsky (1840-1893)

Mournfully

mp *mf*

49

MARINE'S HYMN

Allegro

Fine

Musical score for Marine's Hymn, featuring two staves of music in 2/4 time with a key signature of two flats. The first staff begins with a dynamic marking of *f* and ends with a repeat sign and a double bar line. The second staff continues the melody and concludes with a dynamic marking of *f* and the instruction "D.C. al Fine".

50

THE YANKEE DOODLE BOY

Allegro

Musical score for The Yankee Doodle Boy, featuring three staves of music in 2/4 time with a key signature of two flats. The first staff begins with a dynamic marking of *f*. The second and third staves show first and second endings, respectively, both ending with repeat signs and double bar lines.

51

THEME (from Symphony No. 94 "The Surprise Symphony")

Franz Joseph Haydn (1732-1809)

Musical score for the Theme from Symphony No. 94, featuring a single staff of music in 4/4 time with a key signature of two flats. The piece starts with a dynamic marking of *mf* and ends with a dynamic marking of *f*.

52

CLASSICAL DANCE

Allegro

Wolfgang Amadeus Mozart (1756-1791)

Musical score for Classical Dance, featuring two staves of music in 4/4 time with a key signature of two flats. The first staff begins with a dynamic marking of *f* and ends with a dynamic marking of *p*. The second staff continues the melody and concludes with a dynamic marking of *p* and the instruction "rit.".

53

SHEPHERD'S HEY

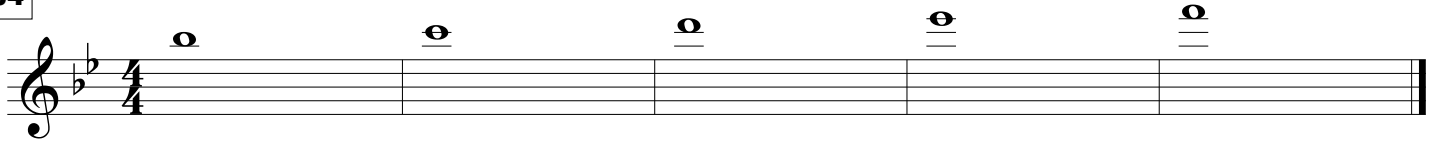
Moderato

English Folk Song

Fine

Musical score for Shepherd's Hey, featuring two staves of music in 4/4 time with a key signature of two flats. The first staff begins with a dynamic marking of *mf* and ends with a dynamic marking of *mf* and the instruction "D.C. al Fine". The second staff continues the melody and concludes with a dynamic marking of *p*.

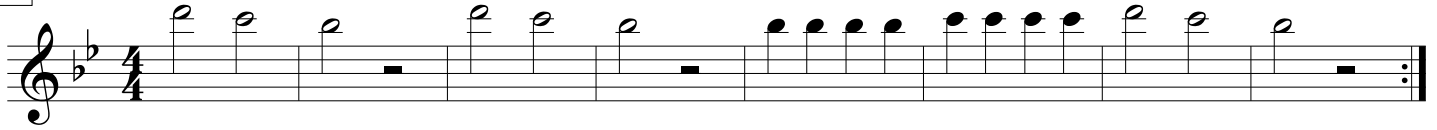
54



55

HOT CROSS BUNS

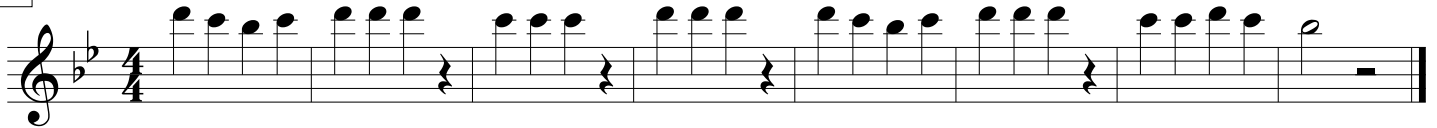
English Folk Song



56

MARY HAD A LITTLE LAMB

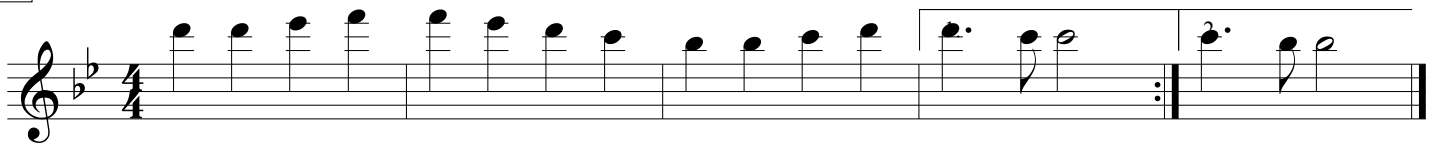
Traditional



57

ODE TO JOY (from Symphony No. 9)

Ludwig van Beethoven (1770-1827)



58

FIGHT SONG

Rachel Platten, Dave Bassett, Jon Levine



59

FIREWORK

Katy Perry, Mikkel S. Ericksen, Tor Erik Hermansen, Sandy Wilhelm, Ester Dean

