

Song Workbook for Clarinet in B \flat

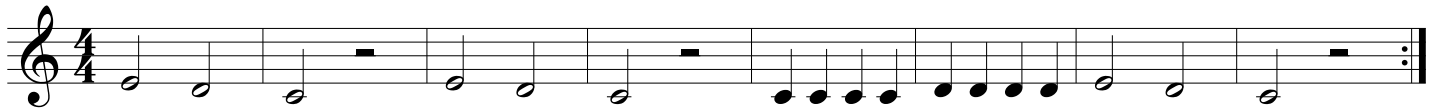
Practice Strategy

Count It! \Rightarrow Ta It! \Rightarrow Note Name It! \Rightarrow Finger It! \Rightarrow Play It!

Trouble? Chunk It! (Play the trouble spot many times in a row)

1 HOT CROSS BUNS

English Folk Song



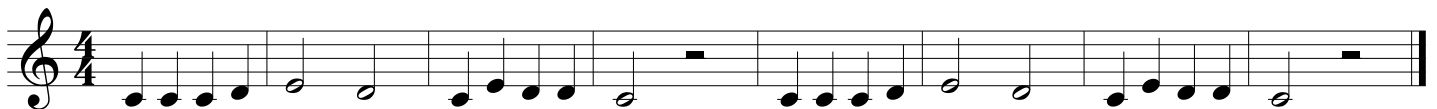
2 MARY HAD A LITTLE LAMB

Traditional



3 AU CLAIRE DE LA LUNE

French Folk Song



4 DOWN BY THE STATION

Traditional



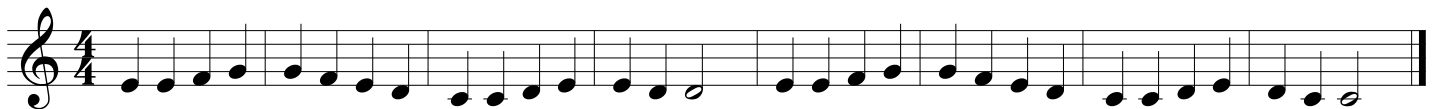
5 WE WILL ROCK YOU

Queen



6 ODE TO JOY (from Symphony No. 9)

Ludwig van Beethoven (1770-1827)



7 GO TELL AUNT RHODY

American Folk Song



8

A LA RUEDA

Spanish Folk Song

Solo/Soli

Tutti

Solo/Soli

Tutti

Musical notation for 'A LA RUEDA' in 4/4 time. The melody consists of a sequence of eighth and quarter notes, ending with a repeat sign.

9

SWEETLY SINGS THE DONKEY

American Folk Song

Musical notation for 'SWEETLY SINGS THE DONKEY' in 4/4 time. The melody is divided into three measures, each starting with a circled number (1, 2, 3) indicating a measure rest. The notation includes quarter and eighth notes, ending with a repeat sign.

10

LIGHTLY ROW

Traditional

Musical notation for 'LIGHTLY ROW' in 4/4 time, presented in two systems. Each system has two staves labeled 'A' and 'B'. The first system shows a melody in staff A and a bass line in staff B. The second system shows a melody in staff A and a bass line in staff B, with some rests in staff A.

11

CELEBRATION

Kool & the Gang (1980)

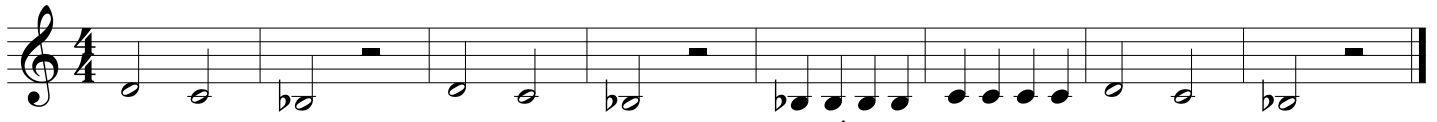
Musical notation for 'CELEBRATION' in 4/4 time. The melody starts with a whole rest, followed by a sequence of quarter and eighth notes, ending with a repeat sign.

12

BLUES IN F

Musical notation for 'BLUES IN F' in 4/4 time. The melody consists of a sequence of quarter and eighth notes, ending with a repeat sign.

20 HOT CROSS ACCIDENTAL!



The "Rule of the Accidental" applies!

21 MARY HAD A KEY SIGNATURE! ★ Always check the key signature before you begin a piece! Then, look for any notes effected by it. You may want to mark these!



22 YANKEE DOODLE ★ Don't forget to check your key signature first and mark any notes that may be effected by it! Traditional



23 EIGHT DAYS A WEEK John Lennon and Paul McCartney of The Beatles

Brightly

5



Fine



D.C. al Fine



24 SKIP TO MY LOU American Folk Song

Solo 1

All

Solo 2

All



25 FRERE JACQUES French Folk Song

①

②

③

④



mf

f

26

THIS OLD MAN

Traditional

Musical notation for 'THIS OLD MAN' in 4/4 time. The piece starts with a piano (*p*) dynamic and ends with a forte (*f*) dynamic. The melody consists of eighth and quarter notes.

27

HARD ROCK BLUES

Allegro

Musical notation for 'HARD ROCK BLUES' in 4/4 time. The tempo is marked 'Allegro'. The piece features a bluesy melody with eighth and quarter notes, including rests and a double bar line with repeat dots.

28

ROCK & ROLL PART 2 (THE "HEY" SONG)

Heavy Rock Shuffle

Mike Leander and Gary Glitter

Musical notation for 'ROCK & ROLL PART 2 (THE "HEY" SONG)' in 4/4 time. The piece is in a 'Heavy Rock Shuffle' style. It features a melody with eighth and quarter notes, including rests and a double bar line with repeat dots.

29

TROMBONE RAG

Allegro

Musical notation for 'TROMBONE RAG' in 4/4 time. The tempo is marked 'Allegro'. The piece features a melody with eighth and quarter notes, including rests and a double bar line with repeat dots. There are two endings: '1.' and '2.'.

30

BLUES ADVENTURE

Allegro

Musical notation for 'BLUES ADVENTURE' in 4/4 time. The tempo is marked 'Allegro'. The piece starts with a forte (*f*) dynamic and ends with a *rit.* (ritardando) marking. The melody consists of eighth and quarter notes.

31

LEAN ON IT

An accent > indicates to play the marked note louder.

Musical notation for 'Lean on It' in 4/4 time. The melody consists of eighth notes with accents (>) on the 3rd, 7th, 11th, and 15th notes.

32

FALLING STAR

Musical notation for 'Falling Star' in 4/4 time. The melody consists of quarter notes in a descending sequence.

33

MORNING MOOD (from Peer Gynt)

Edvard Grieg (1843-1907)

Musical notation for 'Morning Mood' in 3/4 time. The melody starts with a piano (*p*) dynamic, moves to mezzo-forte (*mf*) in the middle, and ends with piano (*p*). A hairpin crescendo and decrescendo are shown.

34

THEME (from the Nutcracker Ballet)

Pyotr Ilyich Tchaikovsky (1840-1893)

Musical notation for 'Theme from the Nutcracker Ballet' in 4/4 time. The melody starts with mezzo-piano (*mp*) and moves to mezzo-forte (*mf*). There are accents (>) on the 10th and 14th notes.

35

WILLIAM TELL OVERTURE

Gioachino Rossini (1792-1868)

Musical notation for 'William Tell Overture' in 4/4 time. The melody starts with mezzo-forte (*mf*) and moves to forte (*f*). There are accents (>) on the 5th and 10th notes.

36

HAPPY BIRTHDAY TO YOU

Musical notation for 'Happy Birthday to You' in 3/4 time. The melody consists of quarter notes with accents (>) on the 3rd, 7th, and 11th notes.

37 JOE AVERY'S BLUES (SECOND LINE)

Willie Norman "Bill" Sinegal (1928-2014)

Swing! ♩ = ♪³♪

Musical notation for Joe Avery's Blues (Second Line). It consists of two staves of music in 4/4 time. The first staff begins with a treble clef and a key signature of one flat (Bb). The tempo is marked 'Swing!' with a note equal to a triplet eighth note. The melody features a series of eighth and quarter notes with some rests, characteristic of a blues progression.

38 WHEN THE SAINTS GO MARCHING IN
Allegro

Musical notation for When the Saints Go Marching In. It consists of two staves of music in 4/4 time. The first staff begins with a treble clef and a key signature of one flat (Bb). The tempo is marked 'Allegro'. The melody starts with a quarter rest followed by a quarter note, then a series of eighth notes. The second staff includes first and second endings, indicated by '1.' and '2.' above the notes.

39 STAR WARS (Main Theme)

John Williams

Musical notation for Star Wars (Main Theme). It consists of one staff of music in 4/4 time. The first staff begins with a treble clef and a key signature of one flat (Bb). The tempo is not explicitly marked but is typically 'Andante'. The melody features a series of quarter notes and eighth notes, with three triplet markings above the notes.

40 MINUET IN G (from the Anna Magdalena Notebook)
Moderato

Johann Sebastian Bach (1685-1750)

Musical notation for Minuet in G. It consists of two staves of music in 3/4 time. The first staff begins with a treble clef and a key signature of one flat (Bb). The tempo is marked 'Moderato'. The melody is a simple, rhythmic piece. The second staff includes first and second endings, indicated by '1.' and '2.' above the notes.

41 LULLABY

Johannes Brahms (1833-1897)

Musical notation for Lullaby. It consists of one staff of music in 3/4 time. The first staff begins with a treble clef and a key signature of one flat (Bb). The tempo is not explicitly marked but is typically 'Andante'. The melody is a simple, rhythmic piece. The first few notes are marked with a piano (*p*) dynamic.

42 THEME (from "Orpheus in the Underworld")
Allegro

Jacques Offenbach (1819-1880)

Musical notation for Theme (from "Orpheus in the Underworld"). It consists of one staff of music in 2/4 time. The first staff begins with a treble clef and a key signature of one flat (Bb). The tempo is marked 'Allegro'. The melody is a simple, rhythmic piece. The second staff includes first and second endings, indicated by '1.' and '2.' above the notes.

43 **THEME (from Symphony No. 9 "New World Symphony")**

Antonin Dvorak (1841-1904)

Largo

p *mp* *p*

44 **TRUMPET VOLUNTARY**

Jeremiah Clarke (1674-1707)

Maestoso

mf

45 **KUM BA YAH**

African Folk Song

Largo

mf

46 **AMERICA**

mf *f*

47 **AMAZING GRACE**

mp *f* *mp* *p*

48 **THEME (from Swan Lake)**

Pyotr Ilyich Tchaikovsky (1840-1893)

Mournfully

mp *mf*

1. 2.

49

MARINE'S HYMN

Allegro

Fine

Musical score for 'MARINE'S HYMN' in 2/4 time. The first staff begins with a forte (*f*) dynamic. The piece concludes with a double bar line and repeat dots, followed by the instruction 'D.C. al Fine'.

50

THE YANKEE DOODLE BOY

Allegro

Musical score for 'THE YANKEE DOODLE BOY' in 2/4 time. The score includes two first endings (marked '1.' and '2.') and concludes with a double bar line and repeat dots.

51

THEME (from Symphony No. 94 "The Surprise Symphony")

Franz Joseph Haydn (1732-1809)



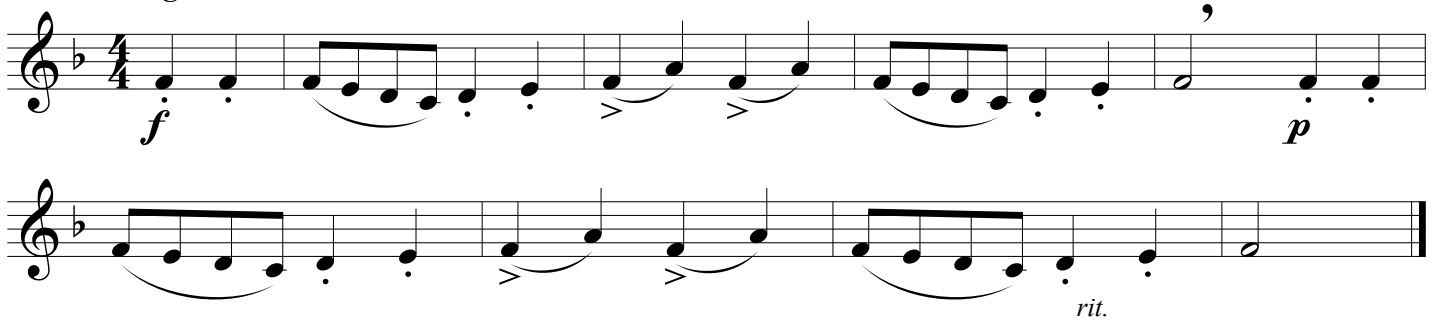
Musical score for the theme from 'Symphony No. 94' in 4/4 time. The piece starts with a mezzo-forte (*mf*) dynamic and ends with a forte (*f*) dynamic.

52

CLASSICAL DANCE

Allegro

Wolfgang Amadeus Mozart (1756-1791)



Musical score for 'CLASSICAL DANCE' in 4/4 time. The piece begins with a forte (*f*) dynamic and ends with a piano (*p*) dynamic. The score includes a *rit.* (ritardando) marking.

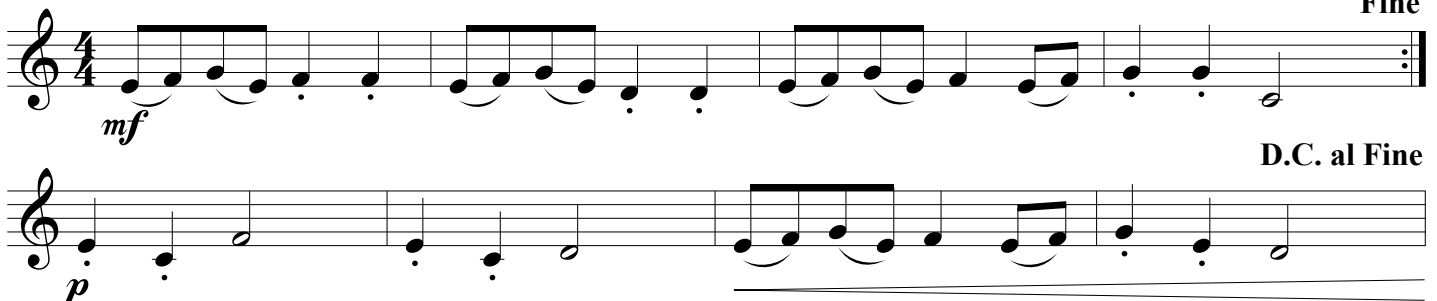
53

SHEPHERD'S HEY

Moderato

English Folk Song

Fine



Musical score for 'SHEPHERD'S HEY' in 4/4 time. The first staff begins with a mezzo-forte (*mf*) dynamic. The piece concludes with a double bar line and repeat dots, followed by the instruction 'D.C. al Fine'. The second staff begins with a piano (*p*) dynamic.

54



55

HOT CROSS BUNS

English Folk Song



56

MARY HAD A LITTLE LAMB

Traditional



57

ODE TO JOY (from Symphony No. 9)

Ludwig van Beethoven (1770-1827)



58

FIGHT SONG

Rachel Platten, Dave Bassett, Jon Levine



59

FIREWORK

Katy Perry, Mikkel S. Ericksen, Tor Erik Hermansen, Sandy Wilhelm, Ester Dean

