

# Song Workbook for Trombone/Baritone/Bassoon

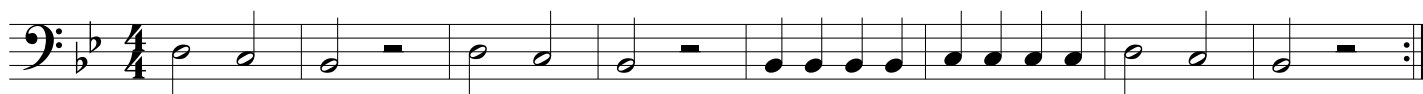
## Practice Strategy

Count It! ⇨ Ta It! ⇨ Note Name It! ⇨ Finger It! ⇨ Play It!

**Trouble?** Chunk It! *(Play the trouble spot many times in a row)*

### 1 HOT CROSS BUNS

English Folk Song



### 2 MARY HAD A LITTLE LAMB

Traditional



### 3 AU CLAIRE DE LA LUNE

French Folk Song



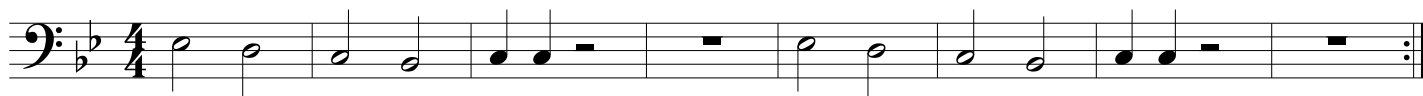
### 4 DOWN BY THE STATION

Traditional



### 5 WE WILL ROCK YOU

Queen



### 6 ODE TO JOY (from Symphony No. 9)

Ludwig van Beethoven (1770-1827)



### 7 GO TELL AUNT RHODY

American Folk Song



8

**A LA RUEDA**

Spanish Folk Song

Solo/Soli

Tutti

Solo/Soli

Tutti

Musical notation for 'A LA RUEDA' in bass clef, 4/4 time, key of B-flat. The piece consists of a single melodic line with a repeat sign at the end.

9

**SWEETLY SINGS THE DONKEY**

American Folk Song

Musical notation for 'SWEETLY SINGS THE DONKEY' in bass clef, 4/4 time, key of B-flat. The piece consists of two staves of music with three circled first endings (1, 2, 3) indicating repeat points.

10

**LIGHTLY ROW**

Traditional

Musical notation for 'LIGHTLY ROW' in bass clef, 4/4 time, key of B-flat. The piece is arranged for two parts, A and B, with two systems of staves. The first system shows both parts playing together, and the second system shows them alternating.

11

**CELEBRATION**

Kool & the Gang (1980)

Musical notation for 'CELEBRATION' in bass clef, 4/4 time, key of B-flat. The piece starts with a whole rest followed by a rhythmic pattern of eighth and quarter notes.

12

**BLUES IN F**

Musical notation for 'BLUES IN F' in bass clef, 4/4 time, key of F. The piece consists of two staves of music with a repeat sign at the end.

Pick any note to play!  
Make sure to play it with a good tone!

**13 SHARK ATTACK!**

Musical notation for 'SHARK ATTACK!' in bass clef, 4/4 time. The piece consists of a single line of music with a fermata at the end.

**14 TWINKLE, TWINKLE**

Wolfgang Amadeus Mozart (1756-1791)

Musical notation for 'TWINKLE, TWINKLE' in bass clef, 4/4 time, consisting of two lines of music.

**15 ALOUETTE**

French-Canadian Folk Song

Musical notation for 'ALOUETTE' in bass clef, 4/4 time.

**16 SHOO FLY!**

American Folk Song

Musical notation for 'SHOO FLY!' in bass clef, 4/4 time, with accents on the first three notes.

**17 RUSSIAN FOLK SONG (Duet)**

Ludwig van Beethoven (1770-1827)

Musical notation for 'RUSSIAN FOLK SONG (Duet)' in bass clef, 4/4 time, with two parts labeled A and B.

**18 LONDON BRIDGE** ▶ Change the AMOUNT of air you use. Always keep your AIR SPEED FAST!

English Folk Song

Musical notation for 'LONDON BRIDGE' in bass clef, 4/4 time, with dynamic markings *f* and *p*.

**19 POLLY WOLLY DOODLE** ▶ Are you GRADUALLY stepping up in volume every two measures?

American Folk Song

Musical notation for 'POLLY WOLLY DOODLE' in bass clef, 4/4 time, with dynamic markings *p*, *mp*, *mf*, and *f*.



26

THIS OLD MAN

Traditional

Musical notation for 'THIS OLD MAN' in bass clef, 4/4 time, key of B-flat major. The piece starts with a piano (*p*) dynamic and ends with a forte (*f*) dynamic. The melody consists of eighth and quarter notes.

27

HARD ROCK BLUES

Allegro

Musical notation for 'HARD ROCK BLUES' in bass clef, 4/4 time, key of B-flat major. The tempo is marked 'Allegro'. The piece features eighth and quarter notes with rests, and includes dynamic markings like *p* and *f*.

28

ROCK & ROLL PART 2 (THE "HEY" SONG)

Heavy Rock Shuffle

Mike Leander and Gary Glitter

Musical notation for 'ROCK & ROLL PART 2 (THE "HEY" SONG)' in bass clef, 4/4 time, key of B-flat major. The tempo is 'Heavy Rock Shuffle'. The piece features a mix of eighth and quarter notes with rests.

29

TROMBONE RAG

Allegro

Musical notation for 'TROMBONE RAG' in bass clef, 4/4 time, key of B-flat major. The tempo is 'Allegro'. The piece features eighth and quarter notes with rests, and includes first and second endings marked '1.' and '2.'.

30

BLUES ADVENTURE

Allegro

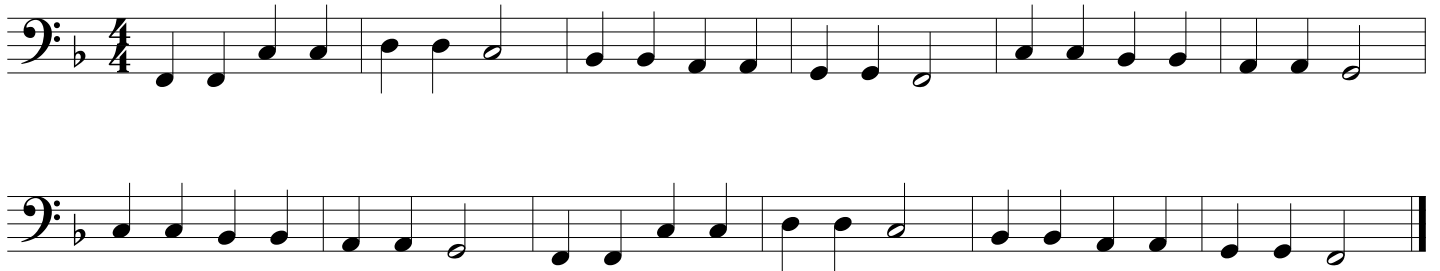
Musical notation for 'BLUES ADVENTURE' in bass clef, 4/4 time, key of B-flat major. The tempo is 'Allegro'. The piece starts with a forte (*f*) dynamic and ends with a *rit.* (ritardando) marking. The melody features eighth and quarter notes with rests.

**31 LEAN ON IT**

An accent > indicates to play the marked note louder.



**32 FALLING STAR**



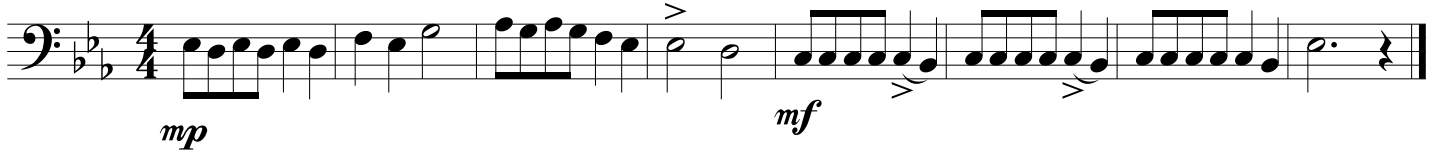
**33 MORNING MOOD (from Peer Gynt)**

Edvard Grieg (1843-1907)



**34 THEME (from the Nutcracker Ballet)**

Pyotr Ilyich Tchaikovsky (1840-1893)



**35 WILLIAM TELL OVERTURE**

Gioachino Rossini (1792-1868)



**36 HAPPY BIRTHDAY TO YOU**



**37** JOE AVERY'S BLUES (SECOND LINE)

Willie Norman "Bill" Sinegal (1928-2014)

Swing!  $\text{♪♪} = \text{♪}^3\text{♪}$

Two staves of musical notation in bass clef, 4/4 time, key of B-flat major. The first staff contains the first line of music, and the second staff contains the second line. The music features a swing feel and includes triplet rhythms.

**38** WHEN THE SAINTS GO MARCHING IN

Allegro

Two staves of musical notation in bass clef, 4/4 time, key of B-flat major. The first staff contains the first line of music, and the second staff contains the second line. The music is in a march-like style and includes first and second endings.

**39** STAR WARS (Main Theme)

John Williams

One staff of musical notation in bass clef, 4/4 time, key of B-flat major. The music features a slow, majestic theme with triplet rhythms.

**40** MINUET IN G (from the Anna Magdalena Notebook)

Johann Sebastian Bach (1685-1750)

Moderato

Two staves of musical notation in bass clef, 3/4 time, key of G major. The first staff contains the first line of music, and the second staff contains the second line. The music is a moderate minuet and includes first and second endings.

**41** LULLABY

Johannes Brahms (1833-1897)

One staff of musical notation in bass clef, 3/4 time, key of B-flat major. The music is a lullaby and includes a piano (*p*) dynamic marking.

**42** THEME (from "Orpheus in the Underworld")

Jacques Offenbach (1819-1880)

Allegro

One staff of musical notation in bass clef, 2/4 time, key of B-flat major. The music is a lively theme and includes first and second endings, as well as accents and a fermata.





49

MARINE'S HYMN

Allegro

Fine

*f* D.C. al Fine

50

THE YANKEE DOODLE BOY

Allegro

1.

2.

51

THEME (from Symphony No. 94 "The Surprise Symphony")

Franz Joseph Haydn (1732-1809)

*mf* *f*

52

CLASSICAL DANCE

Allegro

Wolfgang Amadeus Mozart (1756-1791)

*f* *p*

*rit.*

53

SHEPHERD'S HEY

Moderato

English Folk Song

Fine

*mf* D.C. al Fine

*p*

54

Musical notation for exercise 54, featuring five whole notes on a bass clef staff in 4/4 time, with notes G<sub>2</sub>, F<sub>2</sub>, E<sub>2</sub>, D<sub>2</sub>, and C<sub>2</sub>.

55

**HOT CROSS BUNS**

English Folk Song

Musical notation for exercise 55, "HOT CROSS BUNS", in 4/4 time with a bass clef and a key signature of one flat.

56

**MARY HAD A LITTLE LAMB**

Traditional

Musical notation for exercise 56, "MARY HAD A LITTLE LAMB", in 4/4 time with a bass clef and a key signature of one flat.

57

**ODE TO JOY (from Symphony No. 9)**

Ludwig van Beethoven (1770-1827)

Musical notation for exercise 57, "ODE TO JOY", in 4/4 time with a bass clef and a key signature of one flat, including first and second endings.

58

**FIGHT SONG**

Rachel Platten, Dave Bassett, Jon Levine

Musical notation for exercise 58, "FIGHT SONG", consisting of three staves in 4/4 time with a bass clef and a key signature of one flat.

59

**FIREWORK**

Katy Perry, Mikkel S. Ericksen, Tor Erik Hermansen, Sandy Wilhelm, Ester Dean

Musical notation for exercise 59, "FIREWORK", consisting of three staves in 4/4 time with a bass clef and a key signature of one flat.