

# Song Workbook for Alto & Bari Sax

## Practice Strategy

Count It! ⇨ Ta It! ⇨ Note Name It! ⇨ Finger It! ⇨ Play It!

*Trouble?* Chunk It! (Play the trouble spot many times in a row)

### 1 HOT CROSS BUNS

English Folk Song



### 2 MARY HAD A LITTLE LAMB

Traditional



### 3 AU CLAIRE DE LA LUNE

French Folk Song



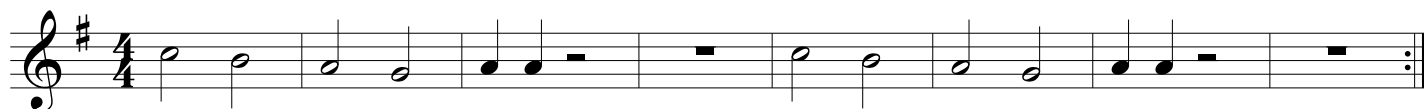
### 4 DOWN BY THE STATION

Traditional



### 5 WE WILL ROCK YOU

Queen



### 6 ODE TO JOY (from Symphony No. 9)

Ludwig van Beethoven (1770-1827)



### 7 GO TELL AUNT RHODY

American Folk Song



**8** **A LA RUEDA** Spanish Folk Song  
 Solo/Soli Tutti Solo/Soli Tutti

**9** **SWEETLY SINGS THE DONKEY** American Folk Song

**10** **LIGHTLY ROW** Traditional

A

B

**11** **CELEBRATION** Kool & the Gang (1980)

**12** **BLUES IN F**



**20 HOT CROSS ACCIDENTAL!**



The "Rule of the Accidental" applies!

**21 MARY HAD A KEY SIGNATURE!** ★ Always check the key signature before you begin a piece! Then, look for any notes effected by it. You may want to mark these!

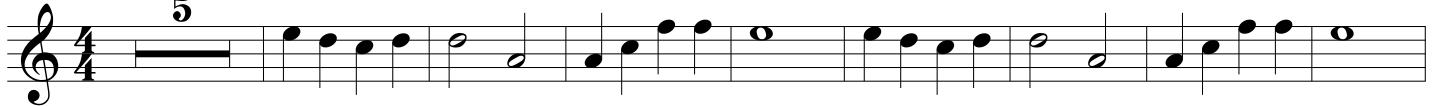


**22 YANKEE DOODLE** ★ Don't forget to check your key signature first and mark any notes that may be effected by it! **Traditional**



**23 EIGHT DAYS A WEEK** John Lennon and Paul McCartney of The Beatles

Brightly



Fine



D.C. al Fine



**24 SKIP TO MY LOU** American Folk Song

Solo 1

All

Solo 2

All



**25 FRERE JACQUES** French Folk Song

①

②

③

④

*mf*

*f*



26

THIS OLD MAN

Traditional

Musical notation for 'THIS OLD MAN' in G major, 4/4 time. The piece starts with a piano (*p*) dynamic and ends with a forte (*f*) dynamic. The melody consists of a series of eighth and quarter notes, with a final flourish of sixteenth notes.

27

HARD ROCK BLUES

Allegro

Musical notation for 'HARD ROCK BLUES' in G major, 4/4 time. The tempo is marked 'Allegro'. The piece features a driving eighth-note melody with frequent rests, creating a syncopated feel. It concludes with a double bar line and repeat dots.

28

ROCK & ROLL PART 2 (THE "HEY" SONG)

Heavy Rock Shuffle

Mike Leander and Gary Glitter

Musical notation for 'ROCK & ROLL PART 2 (THE "HEY" SONG)' in G major, 4/4 time. The tempo is 'Heavy Rock Shuffle'. The melody is characterized by a shuffle feel with dotted rhythms and eighth notes. It includes a first ending and a second ending.

29

TROMBONE RAG

Allegro

Musical notation for 'TROMBONE RAG' in G major, 4/4 time. The tempo is 'Allegro'. The piece features a melodic line with eighth-note patterns and a first ending that leads to a second ending.

30

BLUES ADVENTURE

Allegro

Musical notation for 'BLUES ADVENTURE' in G major, 4/4 time. The tempo is 'Allegro'. The piece starts with a forte (*f*) dynamic and ends with a *rit.* (ritardando) marking. The melody is a blues-influenced eighth-note pattern.

**31 LEAN ON IT**

An accent > indicates to play the marked note louder.

Musical notation for 'Lean on It' in G major, 4/4 time. The melody consists of eighth and quarter notes. Accents (&gt;) are placed over the 5th, 9th, 13th, and 17th notes. The piece ends with a double bar line and a fermata over the final note.

**32 FALLING STAR**

Musical notation for 'Falling Star' in G major, 4/4 time. The melody is composed of quarter and eighth notes. It consists of two staves of music, ending with a double bar line and a fermata over the final note.

**33 MORNING MOOD (from Peer Gynt)**

Edvard Grieg (1843-1907)

Musical notation for 'Morning Mood' in G major, 3/4 time. The melody features a piano (*p*) dynamic at the start, followed by a crescendo to mezzo-forte (*mf*), and then a decrescendo back to piano (*p*). The piece ends with a double bar line and a fermata over the final note.

**34 THEME (from the Nutcracker Ballet)**

Pyotr Ilyich Tchaikovsky (1840-1893)

Musical notation for 'Theme from the Nutcracker Ballet' in G major, 4/4 time. The melody starts with a mezzo-piano (*mp*) dynamic, moves to mezzo-forte (*mf*), and includes accents (>) over several notes. The piece ends with a double bar line and a fermata over the final note.

**35 WILLIAM TELL OVERTURE**

Gioachino Rossini (1792-1868)

Musical notation for 'William Tell Overture' in G major, 4/4 time. The melody begins with a mezzo-forte (*mf*) dynamic and features a fermata over the 5th note. The piece concludes with a double bar line and a fortissimo (*f*) dynamic marking.

**36 HAPPY BIRTHDAY TO YOU**

Musical notation for 'Happy Birthday to You' in G major, 3/4 time. The melody is a simple, well-known tune. It ends with a double bar line and a fermata over the final note.

**37** JOE AVERY'S BLUES (SECOND LINE)

Willie Norman "Bill" Sinegal (1928-2014)

Swing! ♩ = ♪<sup>3</sup>♪

Two staves of musical notation in G major and 4/4 time. The first staff contains the first eight measures, and the second staff contains the remaining eight measures. The piece features a swing feel and includes triplet eighth notes.

**38** WHEN THE SAINTS GO MARCHING IN

Allegro

Two staves of musical notation in G major and 4/4 time. The first staff contains the first eight measures, and the second staff contains the remaining eight measures. The piece is marked Allegro and includes first and second endings.

**39** STAR WARS (Main Theme)

John Williams

One staff of musical notation in G major and 4/4 time. The piece consists of a single line of music with three triplet eighth notes.

**40** MINUET IN G (from the Anna Magdalena Notebook)

Johann Sebastian Bach (1685-1750)

Moderato

Two staves of musical notation in G major and 3/4 time. The first staff contains the first eight measures, and the second staff contains the remaining eight measures. The piece is marked Moderato and includes first and second endings.

**41** LULLABY

Johannes Brahms (1833-1897)

One staff of musical notation in G major and 3/4 time. The piece consists of a single line of music with a piano (*p*) dynamic marking.

**42** THEME (from "Orpheus in the Underworld")

Jacques Offenbach (1819-1880)

Allegro

One staff of musical notation in G major and 2/4 time. The piece consists of a single line of music with accents and first and second endings.

**43** **THEME (from Symphony No. 9 "New World Symphony")**  
Largo

Antonin Dvorak (1841-1904)

*p* *mp* *p*

**44** **TRUMPET VOLUNTARY**  
Maestoso

Jeremiah Clarke (1674-1707)

*mf*

**45** **KUM BA YAH**  
Largo

African Folk Song

*mf*

**46** **AMERICA**

*mf* *f*

**47** **AMAZING GRACE**

*mp* *f* *mp* *p*

**48** **THEME (from Swan Lake)**  
Mournfully

Pyotr Ilyich Tchaikovsky (1840-1893)

*mp* *mf*

1. 2.



49

MARINE'S HYMN

Allegro

Fine

Musical score for 'MARINE'S HYMN' in G major, 2/4 time. The first staff begins with a dynamic marking of *f*. The piece concludes with a repeat sign and the instruction 'D.C. al Fine'.

50

THE YANKEE DOODLE BOY

Allegro

Musical score for 'THE YANKEE DOODLE BOY' in G major, 2/4 time. It features two distinct first endings, labeled '1.' and '2.', leading to the final conclusion of the piece.

51

THEME (from Symphony No. 94 "The Surprise Symphony")

Franz Joseph Haydn (1732-1809)



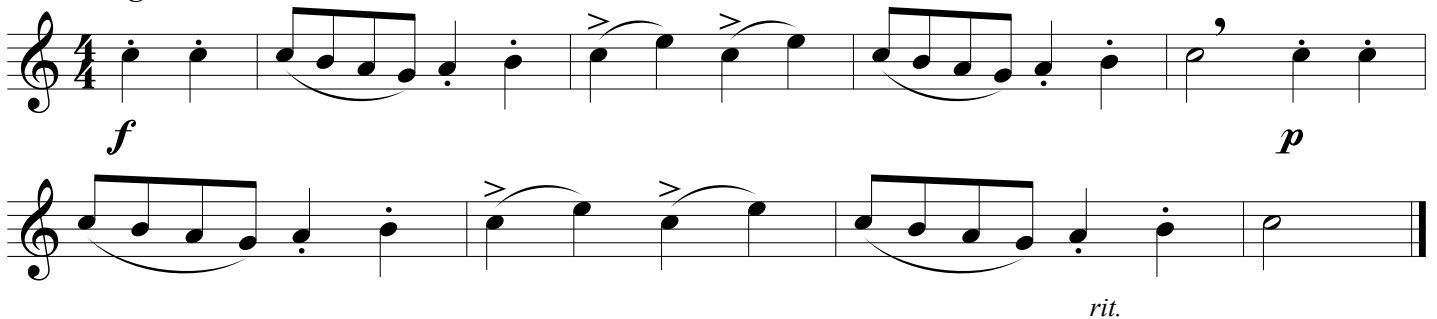
Musical score for the theme from 'The Surprise Symphony' in G major, 4/4 time. The piece starts with a dynamic marking of *mf* and concludes with a dynamic marking of *f*.

52

CLASSICAL DANCE

Allegro

Wolfgang Amadeus Mozart (1756-1791)



Musical score for 'CLASSICAL DANCE' in G major, 4/4 time. The piece features dynamic markings of *f* and *p*, and concludes with a *rit.* (ritardando) instruction.

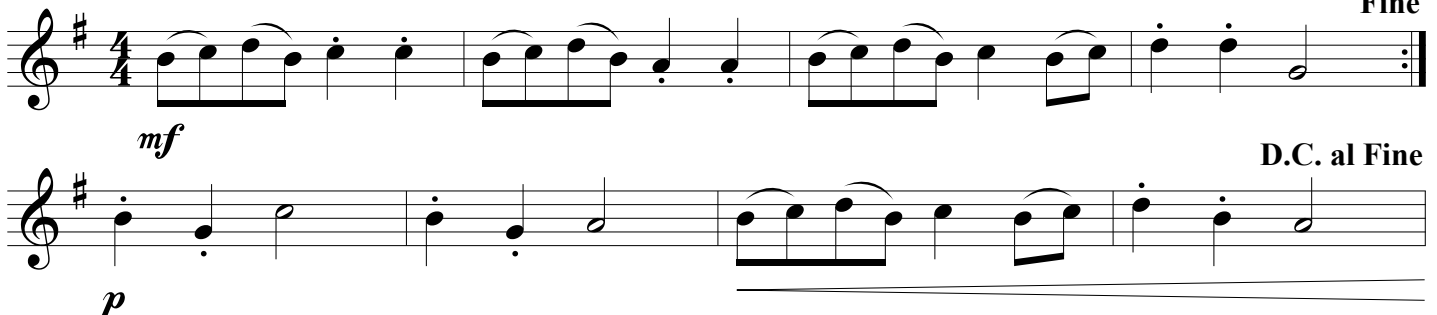
53

SHEPHERD'S HEY

Moderato

English Folk Song

Fine



Musical score for 'SHEPHERD'S HEY' in G major, 4/4 time. The first staff begins with a dynamic marking of *mf*. The piece concludes with a dynamic marking of *p* and the instruction 'D.C. al Fine'.

